



Quarter-final

# Argentina - Belgium 1 : 0 ( 1 : 0 )

# 60 05 JUL 2014 13:00 Brasilia / Estadio Nacional / BRA

## Argentina

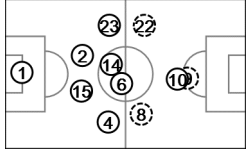


Tactical line-up

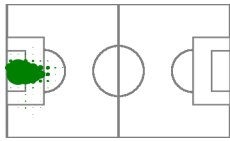


Direction of play →

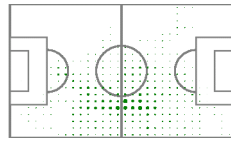
Actual formation



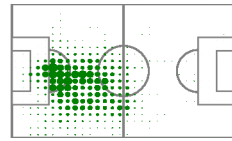
**1 ROMERO**  
3,347 m / 97'05"



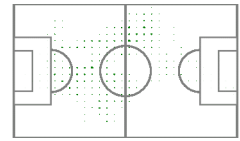
**7 DI MARIA**  
3,425 m / 32'42"



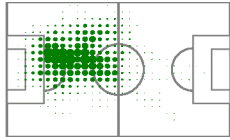
**15 DEMICHELIS**  
8,709 m / 97'05"



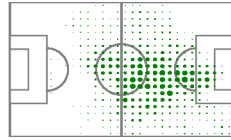
**5 GAGO**  
1,653 m / 14'19"



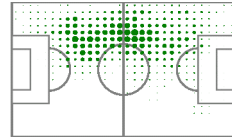
**2 GARAY**  
9,256 m / 97'05"



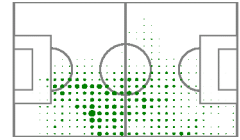
**9 HIGUAIN**  
8,847 m / 82'47"



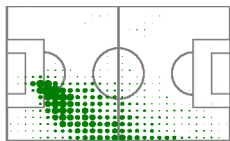
**22 LAVEZZI**  
8,360 m / 72'16"



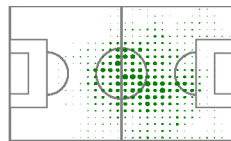
**8 PEREZ**  
7,302 m / 64'23"



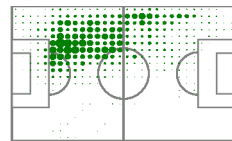
**4 ZABALETA**  
10,021 m / 97'05"



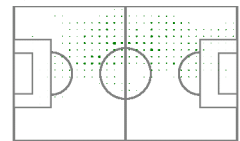
**10 MESSI**  
8,422 m / 97'05"



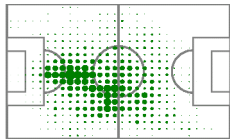
**23 BASANTA**  
10,576 m / 97'05"



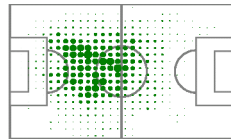
**18 PALACIO**  
3,081 m / 24'49"



**6 BIGLIA**  
11,353 m / 97'05"



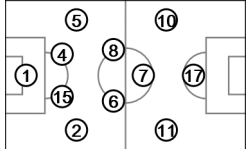
**14 MASCHERANO**  
10,504 m / 97'05"



## Belgium

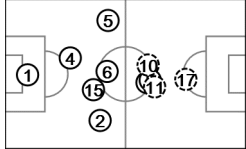


Tactical line-up

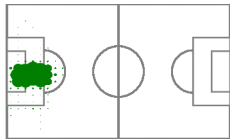


Direction of play →

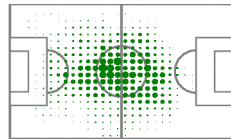
Actual formation



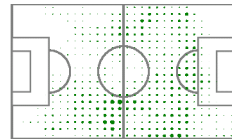
**1 COURTOIS**  
3,899 m / 97'05"



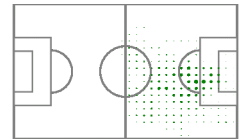
**6 WITSEL**  
9,888 m / 97'05"



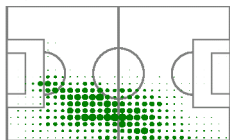
**11 MIRALLAS**  
7,265 m / 61'08"



**9 LUKAKU**  
3,029 m / 36'07"



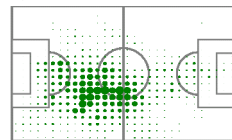
**2 ALDERWEIRELD**  
10,626 m / 97'05"



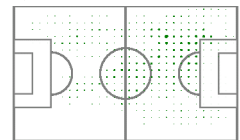
**7 DE BRUYNE**  
11,285 m / 97'05"



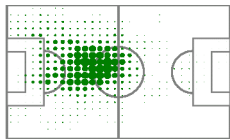
**15 VAN BUYTEN**  
9,520 m / 97'05"



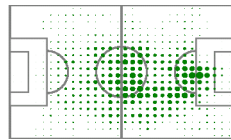
**14 MERTENS**  
3,585 m / 35'57"



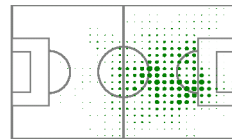
**4 KOMPANY**  
9,357 m / 97'05"



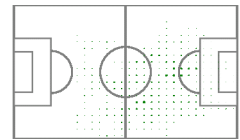
**8 FELLAINI**  
11,713 m / 97'05"



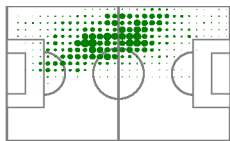
**17 ORIGI**  
6,771 m / 60'58"



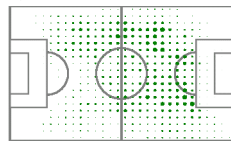
**22 CHADLI**  
2,313 m / 20'10"



**5 VERTONGHEN**  
9,321 m / 97'05"



**10 E. HAZARD**  
8,217 m / 76'56"



Actual formation: average player positions

FIFA does not vouch for the accuracy of technical statistics compiled in association with its competition results system partner.

