



Quarter-final

Actual Formation

Argentina - Belgium 1 : 0 (1 : 0)

60 05 JUL 2014 13:00 Brasilia / Estadio Nacional / BRA

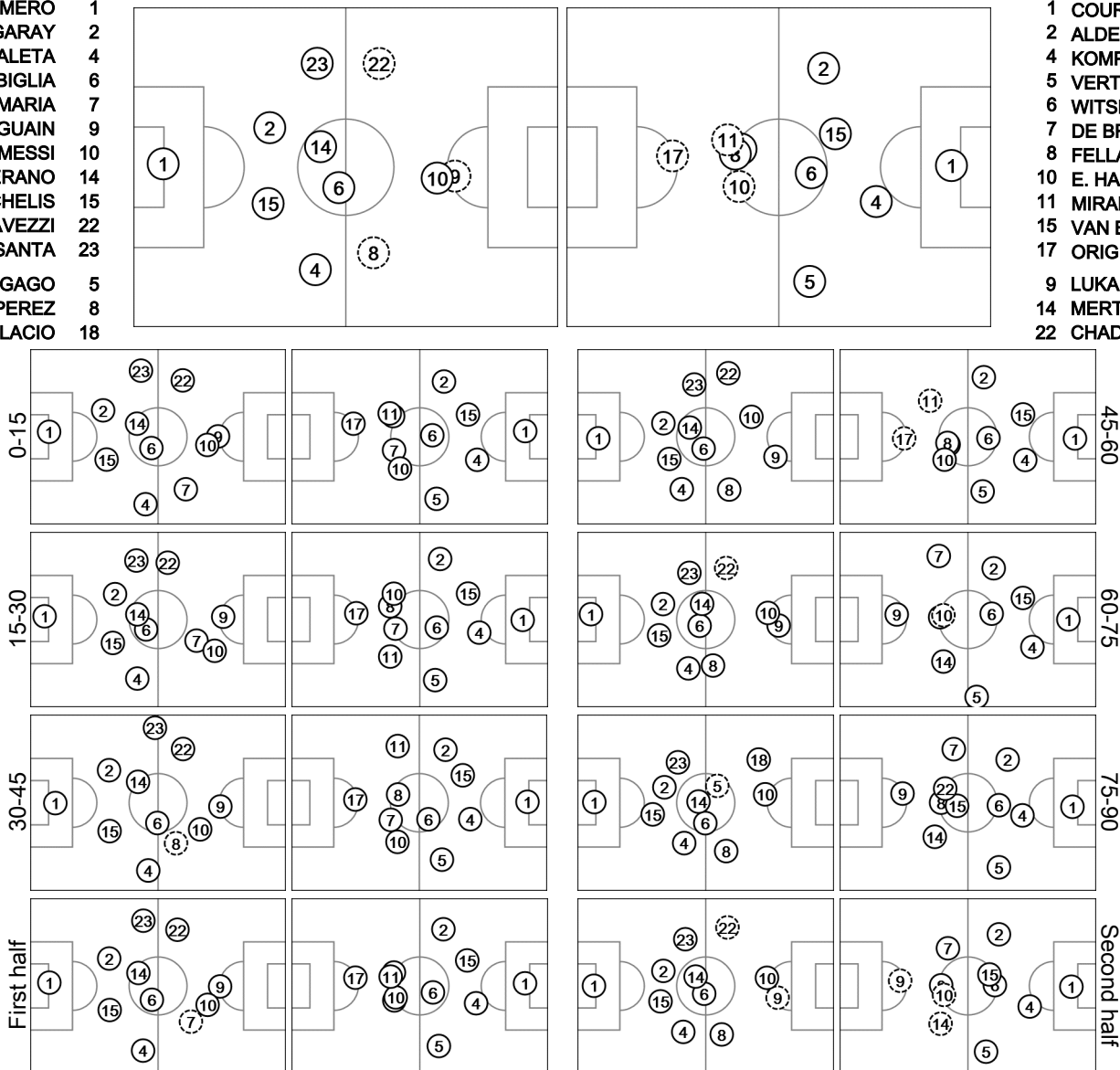
33' ⌚ In 8 PEREZ / Out 7 DI MARIA
 71' ⌚ In 18 PALACIO / Out 22 LAVEZZI
 81' ⌚ In 5 GAGO / Out 9 HIGUAIN

59' ⌚ In 9 LUKAKU / Out 17 ORIGI
 60' ⌚ In 14 MERTENS / Out 11 MIRALLAS
 75' ⌚ In 22 CHADLI / Out 10 E. HAZARD

Total time played 97'05"
 51% - 27'28" Ball possession 49% - 26'35"
 Actual formation
 Direction of play --> <-- Direction of play

- ROMERO 1
- GARAY 2
- ZABALETA 4
- BIGLIA 6
- DI MARIA 7
- HIGUAIN 9
- MESSI 10
- MASCHERANO 14
- DEMICHIELIS 15
- LAVEZZI 22
- BASANTA 23
- GAGO 5
- PEREZ 8
- PALACIO 18

- 1 COURTOIS
- 2 ALDERWEIRELD
- 4 KOMPANY
- 5 VERTONGHEN
- 6 WITSEL
- 7 DE BRUYNE
- 8 FELLAINI
- 10 E. HAZARD
- 11 MIRALLAS
- 15 VAN BUYTEN
- 17 ORIGI
- 9 LUKAKU
- 14 MERTENS
- 22 CHADLI



⊙ Did not play the entire match ⌚ Substitution (R) Sent off Actual formation: average player positions

FIFA does not vouch for the accuracy of technical statistics compiled in association with its competition results system partner.

