

Team Tracking Statistics



Group G

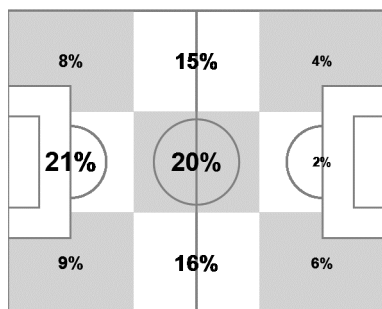
USA - Germany 0 : 1 (0 : 0)

45 26 JUN 2014 13:00 Recife / Arena Pernambuco / BRA



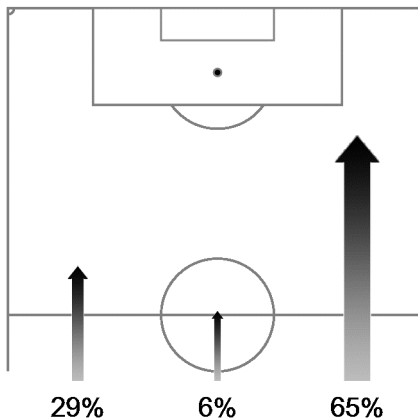
USA

Ball possession heat map



Attacking direction →

Attack origin



#	Name	Time	Distance covered (metres)			Time spent			Sprints	Top speed	Activity time spent		
			Total	In Poss	Not in Poss	Opp. Half	Att. 3rd	Pen. Area			Low	Medium	High
1	HOWARD	95'03"	4,017	1,177	1,709	2%	1%		1	18.47	98%	1%	1%
3	GONZALEZ	95'03"	10,037	2,641	5,041	11%	3%	2%	25	25.78	85%	8%	7%
4	BRADLEY	95'03"	13,084	3,808	6,326	38%	13%	2%	59	28.33	74%	12%	14%
5	BESLER	95'03"	9,627	2,493	4,798	6%	2%	1%	23	29.05	85%	9%	6%
7	BEASLEY	95'03"	9,682	2,582	4,913	19%	6%		35	30.17	85%	7%	8%
8	DEMPSEY	95'03"	10,798	3,018	4,836	63%	25%	4%	34	25.96	84%	7%	9%
13	JONES	95'03"	11,443	3,053	5,441	45%	15%	3%	53	31.43	78%	10%	12%
14	DAVIS	59'37"	7,706	2,387	3,517	37%	14%	1%	39	28.33	76%	10%	14%
15	BECKERMAN	95'03"	11,475	3,042	5,864	21%	5%		29	26.32	77%	12%	11%
19	ZUSI	84'04"	10,698	3,204	4,948	39%	13%	1%	44	30.13	76%	11%	13%
23	JOHNSON	95'03"	10,091	2,777	5,117	23%	6%		31	27.36	83%	9%	8%
2	YEDLIN	10'59"	1,390	258	793	51%	17%	5%	10	28.87	77%	9%	14%
11	BEDOYA	35'27"	4,497	989	2,453	56%	25%	4%	40	32.33	76%	9%	15%

In Poss: Team in possession

Opp. Half: In opposing half

Bold values: top performing in the match

Not In Poss: Opposite team in possession

Att. 3rd: In attacking third

Pen. Area: In penalty area

FIFA does not vouch for the accuracy of technical statistics compiled in association with its competition results system partner.

