

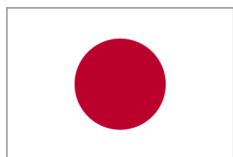
Team Tracking Statistics



Group C

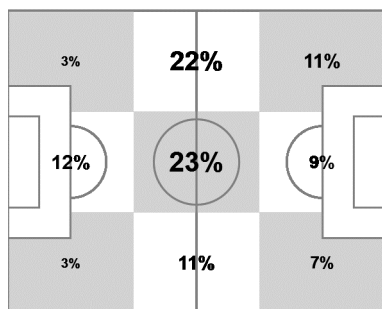
Japan - Greece 0 : 0 (0 : 0)

22 19 JUN 2014 19:00 Natal / Estadio Das Dunas / BRA



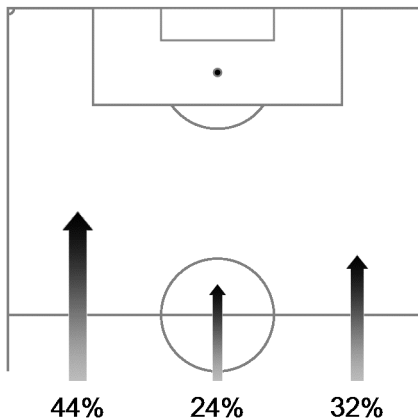
Japan

Ball possession heat map



Attacking direction →

Attack origin



#	Name	Time	Distance covered (metres)			Time spent			Sprints	Top speed	Activity time spent		
			Total	In Poss	Not in Poss	Opp. Half	Att. 3rd	Pen. Area			Low	Medium	High
1	KAWASHIMA	96'23"	3,396	1,080	873				14.47	99%		1%	
2	UCHIDA	96'23"	10,005	4,193	2,322	46%	20%	3%	36	29.95	85%	6%	9%
4	HONDA	96'23"	9,795	4,232	2,241	73%	41%	3%	31	29.59	83%	7%	10%
5	NAGATOMO	96'23"	11,166	4,760	2,618	51%	31%	3%	52	30.71	77%	12%	11%
9	OKAZAKI	96'23"	9,428	4,035	2,089	76%	52%	17%	50	30.13	84%	7%	9%
13	OKUBO	96'23"	10,123	4,494	2,168	71%	44%	11%	35	25.60	82%	9%	9%
15	KONNO	96'23"	8,841	3,369	2,114	31%	7%	3%	22	26.86	87%	7%	6%
16	YAMAGUCHI	96'23"	9,012	3,919	2,253	46%	10%	2%	30	28.87	86%	7%	7%
17	HASEBE	47'09"	5,059	2,202	1,182	45%	16%	1%	10	23.04	81%	10%	9%
18	OSAKO	58'28"	6,246	2,709	1,286	84%	56%	16%	30	25.96	83%	9%	8%
22	YOSHIDA	96'23"	9,770	3,753	2,311	31%	15%	6%	23	27.58	83%	9%	8%
7	ENDO	49'14"	4,823	2,138	1,049	58%	26%	3%	13	23.76	83%	9%	8%
10	KAGAWA	37'55"	4,361	1,871	874	65%	46%	13%	17	28.51	80%	8%	12%

In Poss: Team in possession

Opp. Half: In opposing half

Bold values: top performing in the match

Not In Poss: Opposite team in possession

Att. 3rd: In attacking third

Pen. Area: In penalty area

FIFA does not vouch for the accuracy of technical statistics compiled in association with its competition results system partner.

