

Team Tracking Statistics



Group E

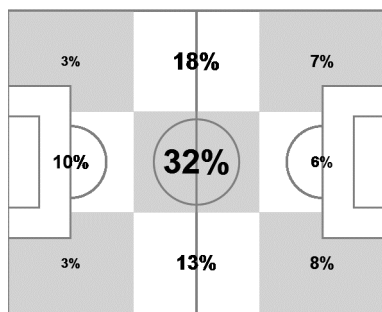
France - Honduras 3 : 0 (1 : 0)

10 15 JUN 2014 16:00 Porto Alegre / Estadio Beira-Rio / BRA



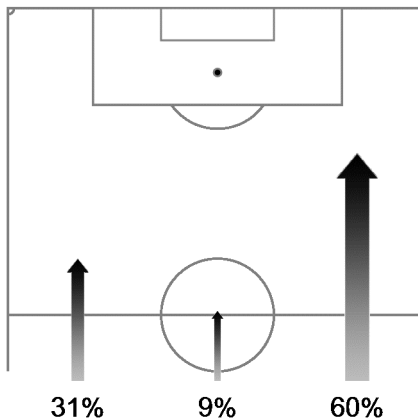
France

Ball possession heat map



Attacking direction →

Attack origin



#	Name	Time	Distance covered (metres)			Time spent			Sprints	Top speed	Activity time spent		
			Total	In Poss	Not in Poss	Opp. Half	Att. 3rd	Pen. Area			Low	Medium	High
1	LLORIS	96'47"	4,815	2,009	1,343				2	21.35	98%	1%	1%
2	DEBUCHY	96'47"	10,143	4,669	2,894	56%	27%	2%	45	26.14	82%	8%	10%
3	EVRA	96'47"	9,203	4,083	2,532	54%	31%	8%	18	29.20	85%	7%	8%
4	VARANE	96'47"	9,386	3,789	2,759	35%	15%	7%	29	32.33	87%	7%	6%
5	SAKHO	96'47"	9,099	3,736	2,613	36%	14%	8%	20	23.69	87%	7%	6%
6	CABAYE	68'35"	7,816	3,663	2,267	54%	21%	1%	25	23.76	77%	11%	12%
8	VALBUENA	81'01"	9,351	4,698	2,347	79%	38%	4%	38	27.40	77%	10%	13%
10	BENZEMA	96'47"	9,850	4,616	2,410	90%	57%	18%	37	28.69	85%	7%	8%
11	GRIEZMANN	96'47"	10,874	5,378	2,731	79%	51%	8%	34	27.72	80%	9%	11%
14	MATUIDI	96'47"	11,069	5,335	2,914	71%	39%	9%	32	29.77	78%	11%	11%
19	POGBA	59'54"	7,043	3,404	1,955	63%	31%	11%	21	24.84	76%	11%	13%
9	GIROUD	15'45"	1,890	980	470	89%	70%	18%	10	24.84	79%	9%	12%
12	MAVUBA	28'12"	3,257	1,477	1,015	58%	18%	6%	10	23.58	77%	11%	12%
18	SISSOKO	36'53"	4,383	2,051	1,230	72%	38%	10%	17	24.62	79%	10%	11%

In Poss: Team in possession Opp. Half: In opposing half Bold values: top performing in the match
 Not In Poss: Opposite team in possession Att. 3rd: In attacking third
 Pen. Area: In penalty area

FIFA does not vouch for the accuracy of technical statistics compiled in association with its competition results system partner.

