

Player Statistics



Group D

Australia - Serbia 2:1 (0:0)

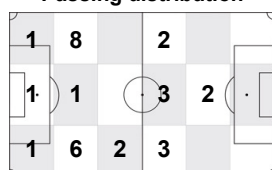
Nelspruit / Mbombela Stadium / RSA



Australia
1 Mark SCHWARZER
 Goalkeeper

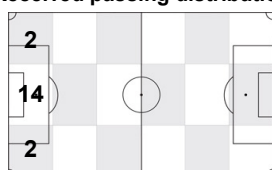
	1st half	2nd half	Total	Team total	Team avg
Goal(s) scored	0	0	0	2	
Attempts on/off target	0	0	0	12	
Assist(s)	0	0	0	1	
Offside(s)	0	0	0	1	
Save(s)	3	2	5	5	
Yellow card(s)	0	0	0	3	
Red card	0	0	0	0	
Foul(s) committed	0	0	0	25	
Delivery/solo runs into the attacking third	0	2	2	36	3.4
Delivery/solo runs into the penalty area	0	0	0	14	1.4
Tackles gaining the ball	0	0	0	4	0.4
Tackles not gaining the ball	0	0	0	0	0.0
Tackles suffered losing the ball	0	0	0	1	0.1
Tackles suffered not losing the ball	0	0	0	2	0.2
Clearances Completed	0	0	0	3	0.3
Clearances Attempted	1	1	2	9	0.9

Passing distribution



Direction of play →

Received passing distribution

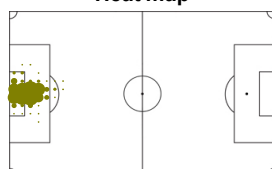


Direction of play →

Activities

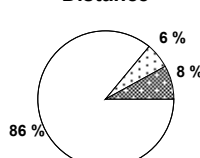
	1st half	2nd half	Total	Team total	Team avg
Total time played (mins)	45'59"	48'14"	94'13"		
Low activity time spent (%)	97%	98%	98%	78%	
Medium activity time spent (%)	2%	1%	1%	10%	
High activity time spent (%)	1%	1%	1%	12%	
Distance covered (metres)	2,246	2,091	4,337	121,508	11,065
Low activity distance covered (metres)	1,938	1,802	3,740	63,586	5,790
Medium activity distance covered (metres)	149	117	266	20,829	1,897
High activity distance covered (metres)	159	171	330	37,091	3,378
Top speed (km/h)	14.25	19.06	19.06	28.39	21.86
Sprints	5	6	11	1546	178

Heat map



Direction of play →

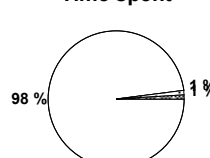
Distance



Activity



Time spent



FIFA does not vouch for the accuracy of technical statistics compiled in association with its competition results system partner.

THU 24 JUN 2010; 12:22 CET / 12:22 local time - Version 2

Page1/0

2010 FIFA World Cup South Africa™

FIFA Partners



FIFA World Cup Sponsors



National Supporters



Player Statistics



Group D

Australia - Serbia 2:1 (0:0)

Nelspruit / Mbombela Stadium / RSA



Australia
2 Lucas NEILL
Defender

	1st half	2nd half	Total	Team total	Team avg
Goal(s) scored	0	0	0	2	
Attempts on/off target	0	0	0	12	
Assist(s)	0	0	0	1	
Offside(s)	0	0	0	1	
Save(s)	0	0	0	5	
Yellow card(s)	0	0	0	3	
Red card	0	0	0	0	
Foul(s) committed	1	0	1	25	
Delivery/solo runs into the attacking third	0	1	1	36	3.4
Delivery/solo runs into the penalty area	0	1	1	14	1.4
Tackles gaining the ball	0	0	0	4	0.4
Tackles not gaining the ball	0	0	0	0	0.0
Tackles suffered losing the ball	0	0	0	1	0.1
Tackles suffered not losing the ball	0	0	0	2	0.2
Clearances Completed	0	1	1	3	0.3
Clearances Attempted	1	2	3	9	0.9

Passing distribution



Direction of play →

Received passing distribution

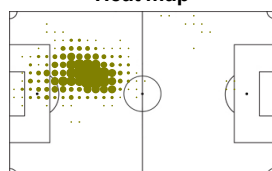


Direction of play →

Activities

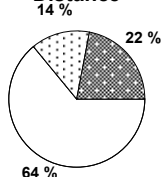
	1st half	2nd half	Total	Team total	Team avg
Total time played (mins)	45'59"	48'14"	94'13"		
Low activity time spent (%)	87%	83%	85%	78%	
Medium activity time spent (%)	6%	9%	7%	10%	
High activity time spent (%)	7%	8%	8%	12%	
Distance covered (metres)	4,538	5,013	9,551	121,508	11,065
Low activity distance covered (metres)	3,028	3,067	6,095	63,586	5,790
Medium activity distance covered (metres)	582	760	1,342	20,829	1,897
High activity distance covered (metres)	928	1,185	2,113	37,091	3,378
Top speed (km/h)	18.90	19.87	19.87	28.39	21.86
Sprints	36	52	88	1546	178

Heat map



Direction of play →

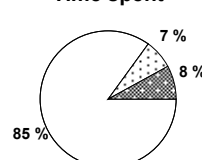
Distance



Activity



Time spent



FIFA does not vouch for the accuracy of technical statistics compiled in association with its competition results system partner.

THU 24 JUN 2010; 12:22 CET / 12:22 local time - Version 2

Page1/0

2010 FIFA World Cup South Africa™

FIFA Partners



FIFA World Cup Sponsors



National Supporters



Player Statistics



Group D

Australia - Serbia 2:1 (0:0)

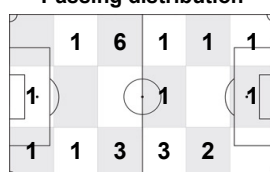
Nelspruit / Mbombela Stadium / RSA



Australia
4 Tim CAHILL
Forward

	1st half	2nd half	Total	Team total	Team avg
Goal(s) scored	0	1	1	2	
Attempts on/off target	2	3	5	12	
Assist(s)	0	0	0	1	
Offside(s)	0	1	1	1	
Save(s)	0	0	0	5	
Yellow card(s)	0	0	0	3	
Red card	0	0	0	0	
Foul(s) committed	1	0	1	25	
Delivery/solo runs into the attacking third	1	2	3	36	3.4
Delivery/solo runs into the penalty area	0	0	0	14	1.4
Tackles gaining the ball	0	0	0	4	0.4
Tackles not gaining the ball	0	0	0	0	0.0
Tackles suffered losing the ball	0	0	0	1	0.1
Tackles suffered not losing the ball	0	0	0	2	0.2
Clearances Completed	1	0	1	3	0.3
Clearances Attempted	1	0	1	9	0.9

Passing distribution



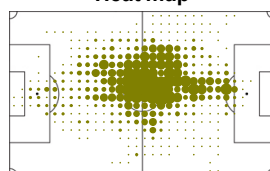
Received passing distribution



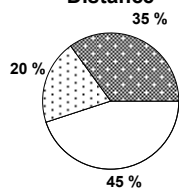
Activities

	1st half	2nd half	Total	Team total	Team avg
Total time played (mins)	45'59"	48'14"	94'13"		
Low activity time spent (%)	68%	76%	72%	78%	
Medium activity time spent (%)	14%	11%	12%	10%	
High activity time spent (%)	18%	13%	16%	12%	
Distance covered (metres)	6,228	5,729	11,957	121,508	11,065
Low activity distance covered (metres)	2,717	2,658	5,375	63,586	5,790
Medium activity distance covered (metres)	1,290	1,075	2,365	20,829	1,897
High activity distance covered (metres)	2,221	1,996	4,217	37,091	3,378
Top speed (km/h)	22.14	21.67	22.14	28.39	21.86
Sprints	77	87	164	1546	178

Heat map



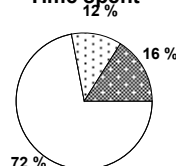
Distance



Activity



Time spent



FIFA does not vouch for the accuracy of technical statistics compiled in association with its competition results system partner.

THU 24 JUN 2010; 12:22 CET / 12:22 local time - Version 2

Page1/0

2010 FIFA World Cup South Africa™

FIFA Partners



FIFA World Cup Sponsors



National Supporters



Player Statistics



Group D

Australia - Serbia 2:1 (0:0)

Nelspruit / Mbombela Stadium / RSA



Australia
5 Jason CULINA
 Midfield

	1st half	2nd half	Total	Team total	Team avg
Goal(s) scored	0	0	0	2	
Attempts on/off target	0	2	2	12	
Assist(s)	0	0	0	1	
Offside(s)	0	0	0	1	
Save(s)	0	0	0	5	
Yellow card(s)	0	0	0	3	
Red card	0	0	0	0	
Foul(s) committed	0	2	2	25	
Delivery/solo runs into the attacking third	0	1	1	36	3.4
Delivery/solo runs into the penalty area	0	0	0	14	1.4
Tackles gaining the ball	0	1	1	4	0.4
Tackles not gaining the ball	0	0	0	0	0.0
Tackles suffered losing the ball	0	0	0	1	0.1
Tackles suffered not losing the ball	0	0	0	2	0.2
Clearances Completed	0	0	0	3	0.3
Clearances Attempted	0	0	0	9	0.9

Passing distribution



Direction of play →

Received passing distribution

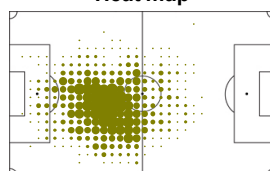


Direction of play →

Activities

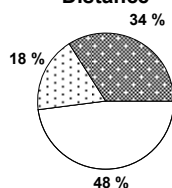
	1st half	2nd half	Total	Team total	Team avg
Total time played (mins)	45'59"	48'14"	94'13"		
Low activity time spent (%)	73%	72%	73%	78%	
Medium activity time spent (%)	14%	11%	12%	10%	
High activity time spent (%)	13%	17%	15%	12%	
Distance covered (metres)	6,115	6,264	12,379	121,508	11,065
Low activity distance covered (metres)	3,025	2,871	5,896	63,586	5,790
Medium activity distance covered (metres)	1,248	1,026	2,274	20,829	1,897
High activity distance covered (metres)	1,842	2,367	4,209	37,091	3,378
Top speed (km/h)	19.95	22.60	22.60	28.39	21.86
Sprints	63	88	151	1546	178

Heat map



Direction of play →

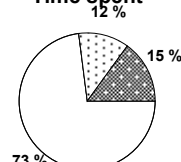
Distance



Activity



Time spent



FIFA does not vouch for the accuracy of technical statistics compiled in association with its competition results system partner.

THU 24 JUN 2010; 12:22 CET / 12:22 local time - Version 2

Page 1/0

2010 FIFA World Cup South Africa™

FIFA Partners



FIFA World Cup Sponsors



National Supporters



Player Statistics



Group D

Australia - Serbia 2:1 (0:0)

Nelspruit / Mbombela Stadium / RSA



Australia
6 Michael BEAUCHAMP
 Defender

	1st half	2nd half	Total	Team total	Team avg
Goal(s) scored	0	0	0	2	
Attempts on/off target	0	0	0	12	
Assist(s)	0	0	0	1	
Offside(s)	0	0	0	1	
Save(s)	0	0	0	5	
Yellow card(s)	0	1	1	3	
Red card	0	0	0	0	
Foul(s) committed	0	1	1	25	
Delivery/solo runs into the attacking third	0	0	0	36	3.4
Delivery/solo runs into the penalty area	0	0	0	14	1.4
Tackles gaining the ball	0	0	0	4	0.4
Tackles not gaining the ball	0	0	0	0	0.0
Tackles suffered losing the ball	0	0	0	1	0.1
Tackles suffered not losing the ball	0	0	0	2	0.2
Clearances Completed	0	0	0	3	0.3
Clearances Attempted	1	0	1	9	0.9

Passing distribution



Direction of play →

Received passing distribution

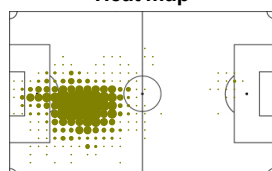


Direction of play →

Activities

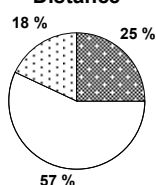
	1st half	2nd half	Total	Team total	Team avg
Total time played (mins)	45'59"	48'14"	94'13"		
Low activity time spent (%)	78%	81%	79%	78%	
Medium activity time spent (%)	12%	9%	10%	10%	
High activity time spent (%)	10%	10%	11%	12%	
Distance covered (metres)	5,505	5,437	10,942	121,508	11,065
Low activity distance covered (metres)	3,076	3,123	6,199	63,586	5,790
Medium activity distance covered (metres)	1,074	848	1,922	20,829	1,897
High activity distance covered (metres)	1,355	1,466	2,821	37,091	3,378
Top speed (km/h)	20.79	19.61	20.79	28.39	21.86
Sprints	39	79	118	1546	178

Heat map



Direction of play →

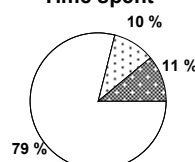
Distance



Activity



Time spent



FIFA does not vouch for the accuracy of technical statistics compiled in association with its competition results system partner.

THU 24 JUN 2010; 12:22 CET / 12:22 local time - Version 2

Page1/0

2010 FIFA World Cup South Africa™

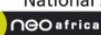
FIFA Partners



FIFA World Cup Sponsors



National Supporters



Player Statistics



Group D

Australia - Serbia 2:1 (0:0)

Nelspruit / Mbombela Stadium / RSA



Australia
7 Brett EMERTON
 Midfield

	1st half	2nd half	Total	Team total	Team avg
Goal(s) scored	0	0	0	2	
Attempts on/off target	0	0	0	12	
Assist(s)	0	0	0	1	
Offside(s)	0	0	0	1	
Save(s)	0	0	0	5	
Yellow card(s)	0	1	1	3	
Red card	0	0	0	0	
Foul(s) committed	3	2	5	25	
Delivery/solo runs into the attacking third	1	3	4	36	3.4
Delivery/solo runs into the penalty area	1	1	2	14	1.4
Tackles gaining the ball	0	0	0	4	0.4
Tackles not gaining the ball	0	0	0	0	0.0
Tackles suffered losing the ball	0	0	0	1	0.1
Tackles suffered not losing the ball	0	0	0	2	0.2
Clearances Completed	0	0	0	3	0.3
Clearances Attempted	1	0	1	9	0.9

Passing distribution



Direction of play →

Received passing distribution

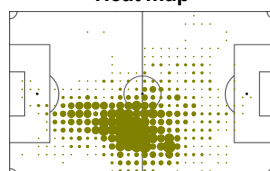


Direction of play →

Activities

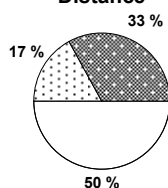
	1st half	2nd half	Total	Team total	Team avg
Total time played (mins)	45'59"	48'14"	94'13"		
Low activity time spent (%)	74%	75%	74%	78%	
Medium activity time spent (%)	12%	11%	11%	10%	
High activity time spent (%)	14%	14%	15%	12%	
Distance covered (metres)	6,150	6,280	12,430	121,508	11,065
Low activity distance covered (metres)	3,155	3,063	6,218	63,586	5,790
Medium activity distance covered (metres)	1,030	1,038	2,068	20,829	1,897
High activity distance covered (metres)	1,966	2,179	4,145	37,091	3,378
Top speed (km/h)	20.79	20.93	20.93	28.39	21.86
Sprints	106	99	205	1546	178

Heat map

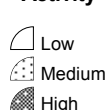


Direction of play →

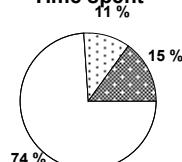
Distance



Activity



Time spent



FIFA does not vouch for the accuracy of technical statistics compiled in association with its competition results system partner.

THU 24 JUN 2010; 12:22 CET / 12:22 local time - Version 2

Page 1/0

2010 FIFA World Cup South Africa™

FIFA Partners



FIFA World Cup Sponsors



National Supporters



Player Statistics



Group D

Australia - Serbia 2:1 (0:0)

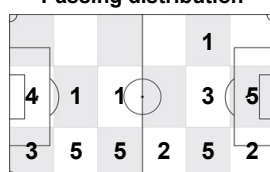
Nelspruit / Mbombela Stadium / RSA



Australia
8 Luke WILKSHIRE
 Defender

	1st half	2nd half	Total	Team total	Team avg
Goal(s) scored	0	0	0	2	
Attempts on/off target	0	0	0	12	
Assist(s)	0	1	1	1	
Offside(s)	0	0	0	1	
Save(s)	0	0	0	5	
Yellow card(s)	0	1	1	3	
Red card	0	0	0	0	
Foul(s) committed	1	2	3	25	
Delivery/solo runs into the attacking third	4	6	10	36	3.4
Delivery/solo runs into the penalty area	2	3	5	14	1.4
Tackles gaining the ball	1	0	1	4	0.4
Tackles not gaining the ball	0	0	0	0	0.0
Tackles suffered losing the ball	0	0	0	1	0.1
Tackles suffered not losing the ball	0	1	1	2	0.2
Clearances Completed	1	0	1	3	0.3
Clearances Attempted	1	0	1	9	0.9

Passing distribution



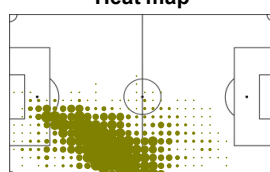
Received passing distribution



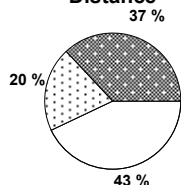
Activities

	1st half	2nd half	Total	Team total	Team avg
Total time played (mins)	45'59"	36'40"	82'39"		
Low activity time spent (%)	69%	73%	71%	78%	
Medium activity time spent (%)	13%	12%	13%	10%	
High activity time spent (%)	18%	15%	16%	12%	
Distance covered (metres)	6,219	4,777	10,996	121,508	11,065
Low activity distance covered (metres)	2,662	2,095	4,757	63,586	5,790
Medium activity distance covered (metres)	1,232	934	2,166	20,829	1,897
High activity distance covered (metres)	2,324	1,748	4,072	37,091	3,378
Top speed (km/h)	22.60	21.29	22.60	28.39	21.86
Sprints	99	67	166	1546	178

Heat map



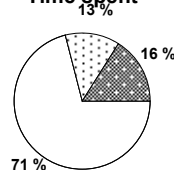
Distance



Activity



Time spent



FIFA does not vouch for the accuracy of technical statistics compiled in association with its competition results system partner.

THU 24 JUN 2010; 12:22 CET / 12:22 local time - Version 2

Page1/0

2010 FIFA World Cup South Africa™

FIFA Partners



FIFA World Cup Sponsors



National Supporters



Player Statistics



Group D

Australia - Serbia 2:1 (0:0)

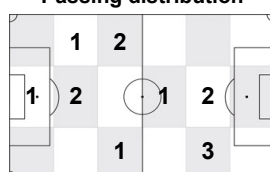
Nelspruit / Mbombela Stadium / RSA



Australia
9 Joshua KENNEDY
 Forward

	1st half	2nd half	Total	Team total	Team avg
Goal(s) scored	0	0	0	2	
Attempts on/off target	1	1	2	12	
Assist(s)	0	0	0	1	
Offside(s)	0	0	0	1	
Save(s)	0	0	0	5	
Yellow card(s)	0	0	0	3	
Red card	0	0	0	0	
Foul(s) committed	2	3	5	25	
Delivery/solo runs into the attacking third	2	0	2	36	3.4
Delivery/solo runs into the penalty area	0	0	0	14	1.4
Tackles gaining the ball	0	0	0	4	0.4
Tackles not gaining the ball	0	0	0	0	0.0
Tackles suffered losing the ball	1	0	1	1	0.1
Tackles suffered not losing the ball	0	0	0	2	0.2
Clearances Completed	0	0	0	3	0.3
Clearances Attempted	0	0	0	9	0.9

Passing distribution



Direction of play →

Received passing distribution

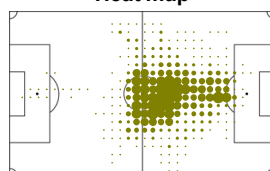


Direction of play →

Activities

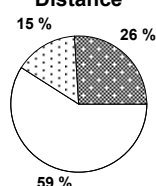
	1st half	2nd half	Total	Team total	Team avg
Total time played (mins)	45'59"	48'14"	94'13"		
Low activity time spent (%)	81%	84%	82%	78%	
Medium activity time spent (%)	10%	7%	8%	10%	
High activity time spent (%)	9%	9%	10%	12%	
Distance covered (metres)	5,281	4,933	10,214	121,508	11,065
Low activity distance covered (metres)	3,092	2,960	6,052	63,586	5,790
Medium activity distance covered (metres)	887	686	1,573	20,829	1,897
High activity distance covered (metres)	1,302	1,288	2,590	37,091	3,378
Top speed (km/h)	20.75	20.27	20.75	28.39	21.86
Sprints	58	48	106	1546	178

Heat map

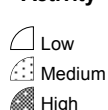


Direction of play →

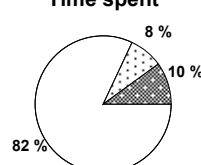
Distance



Activity



Time spent



FIFA does not vouch for the accuracy of technical statistics compiled in association with its competition results system partner.

THU 24 JUN 2010; 12:22 CET / 12:22 local time - Version 2

Page1/0

2010 FIFA World Cup South Africa™

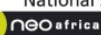
FIFA Partners



FIFA World Cup Sponsors



National Supporters



Player Statistics



Group D

Australia - Serbia 2:1 (0:0)

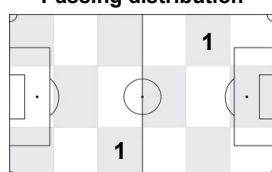
Nelspruit / Mbombela Stadium / RSA



Australia
11 Scott CHIPPERFIELD
 Defender

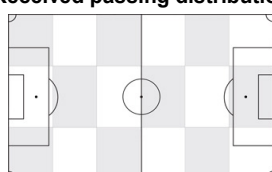
	1st half	2nd half	Total	Team total	Team avg
Goal(s) scored	0	0	0	2	
Attempts on/off target	0	0	0	12	
Assist(s)	0	0	0	1	
Offside(s)	0	0	0	1	
Save(s)	0	0	0	5	
Yellow card(s)	0	0	0	3	
Red card	0	0	0	0	
Foul(s) committed	0	2	2	25	
Delivery/solo runs into the attacking third	-	1	1	36	3.4
Delivery/solo runs into the penalty area	-	0	0	14	1.4
Tackles gaining the ball	-	0	0	4	0.4
Tackles not gaining the ball	-	0	0	0	0.0
Tackles suffered losing the ball	-	0	0	1	0.1
Tackles suffered not losing the ball	-	0	0	2	0.2
Clearances Completed	-	0	0	3	0.3
Clearances Attempted	-	0	0	9	0.9

Passing distribution



Direction of play →

Received passing distribution

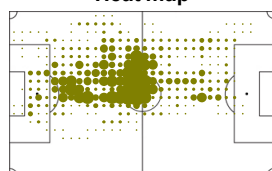


Direction of play →

Activities

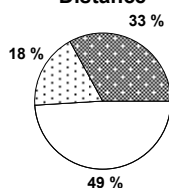
	1st half	2nd half	Total	Team total	Team avg
Total time played (mins)	0'00"	27'55"	27'55"		
Low activity time spent (%)	0%	74%	74%	78%	
Medium activity time spent (%)	0%	13%	13%	10%	
High activity time spent (%)	0%	13%	13%	12%	
Distance covered (metres)	-	3,687	3,687	121,508	11,065
Low activity distance covered (metres)	-	1,820	1,820	63,586	5,790
Medium activity distance covered (metres)	-	658	658	20,829	1,897
High activity distance covered (metres)	-	1,209	1,209	37,091	3,378
Top speed (km/h)	-	22.60	22.60	28.39	21.86
Sprints	-	63	63	1546	178

Heat map



Direction of play →

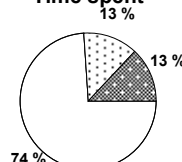
Distance



Activity



Time spent



FIFA does not vouch for the accuracy of technical statistics compiled in association with its competition results system partner.

THU 24 JUN 2010; 12:22 CET / 12:22 local time - Version 2

Page 1/0

2010 FIFA World Cup South Africa™

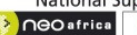
FIFA Partners



FIFA World Cup Sponsors



National Supporters



Player Statistics



Group D

Australia - Serbia 2:1 (0:0)

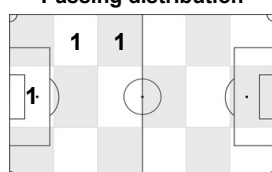
Nelspruit / Mbombela Stadium / RSA



Australia
14 Brett HOLMAN
 Forward

	1st half	2nd half	Total	Team total	Team avg
Goal(s) scored	0	1	1	2	
Attempts on/off target	0	1	1	12	
Assist(s)	0	0	0	1	
Offside(s)	0	0	0	1	
Save(s)	0	0	0	5	
Yellow card(s)	0	0	0	3	
Red card	0	0	0	0	
Foul(s) committed	0	0	0	25	
Delivery/solo runs into the attacking third	-	0	0	36	3.4
Delivery/solo runs into the penalty area	-	0	0	14	1.4
Tackles gaining the ball	-	0	0	4	0.4
Tackles not gaining the ball	-	0	0	0	0.0
Tackles suffered losing the ball	-	0	0	1	0.1
Tackles suffered not losing the ball	-	0	0	2	0.2
Clearances Completed	-	0	0	3	0.3
Clearances Attempted	-	0	0	9	0.9

Passing distribution



Direction of play →

Received passing distribution

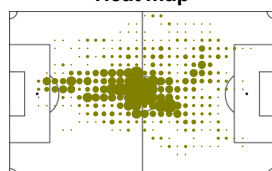


Direction of play →

Activities

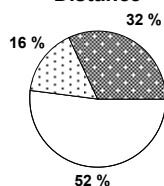
	1st half	2nd half	Total	Team total	Team avg
Total time played (mins)	0'00"	28'11"	28'11"		
Low activity time spent (%)	0%	79%	79%	78%	
Medium activity time spent (%)	0%	9%	9%	10%	
High activity time spent (%)	0%	12%	12%	12%	
Distance covered (metres)	-	3,410	3,410	121,508	11,065
Low activity distance covered (metres)	-	1,771	1,771	63,586	5,790
Medium activity distance covered (metres)	-	553	553	20,829	1,897
High activity distance covered (metres)	-	1,086	1,086	37,091	3,378
Top speed (km/h)	-	28.39	28.39	28.39	21.86
Sprints	-	62	62	1546	178

Heat map



Direction of play →

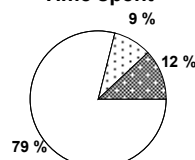
Distance



Activity



Time spent



FIFA does not vouch for the accuracy of technical statistics compiled in association with its competition results system partner.

THU 24 JUN 2010; 12:22 CET / 12:22 local time - Version 2

Page1/0

2010 FIFA World Cup South Africa™

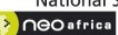
FIFA Partners



FIFA World Cup Sponsors



National Supporters



Player Statistics



Group D

Australia - Serbia 2:1 (0:0)

Nelspruit / Mbombela Stadium / RSA



Australia
16 Carl VALERI
Midfield

	1st half	2nd half	Total	Team total	Team avg
Goal(s) scored	0	0	0	2	
Attempts on/off target	0	0	0	12	
Assist(s)	0	0	0	1	
Offside(s)	0	0	0	1	
Save(s)	0	0	0	5	
Yellow card(s)	0	0	0	3	
Red card	0	0	0	0	
Foul(s) committed	1	1	2	25	
Delivery/solo runs into the attacking third	1	1	2	36	3.4
Delivery/solo runs into the penalty area	0	1	1	14	1.4
Tackles gaining the ball	1	0	1	4	0.4
Tackles not gaining the ball	0	0	0	0	0.0
Tackles suffered losing the ball	0	0	0	1	0.1
Tackles suffered not losing the ball	0	0	0	2	0.2
Clearances Completed	0	0	0	3	0.3
Clearances Attempted	0	0	0	9	0.9

Passing distribution



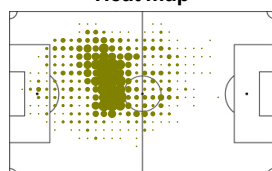
Received passing distribution



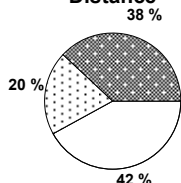
Activities

	1st half	2nd half	Total	Team total	Team avg
Total time played (mins)	45'59"	20'03"	66'02"		
Low activity time spent (%)	65%	68%	66%	78%	
Medium activity time spent (%)	16%	13%	15%	10%	
High activity time spent (%)	19%	19%	19%	12%	
Distance covered (metres)	6,705	2,887	9,592	121,508	11,065
Low activity distance covered (metres)	2,822	1,183	4,005	63,586	5,790
Medium activity distance covered (metres)	1,419	544	1,963	20,829	1,897
High activity distance covered (metres)	2,464	1,159	3,623	37,091	3,378
Top speed (km/h)	22.95	19.25	22.95	28.39	21.86
Sprints	94	52	146	1546	178

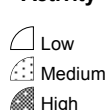
Heat map



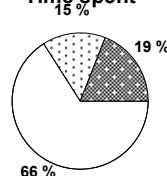
Distance



Activity



Time spent



FIFA does not vouch for the accuracy of technical statistics compiled in association with its competition results system partner.

THU 24 JUN 2010; 12:22 CET / 12:22 local time - Version 2

Page1/0

2010 FIFA World Cup South Africa™

FIFA Partners



FIFA World Cup Sponsors



National Supporters



Player Statistics



Group D

Australia - Serbia 2:1 (0:0)

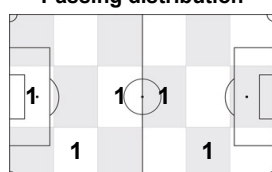
Nelspruit / Mbombela Stadium / RSA



Australia
19 Richard GARCIA
 Forward

	1st half	2nd half	Total	Team total	Team avg
Goal(s) scored	0	0	0	2	
Attempts on/off target	0	0	0	12	
Assist(s)	0	0	0	1	
Offside(s)	0	0	0	1	
Save(s)	0	0	0	5	
Yellow card(s)	0	0	0	3	
Red card	0	0	0	0	
Foul(s) committed	0	0	0	25	
Delivery/solo runs into the attacking third	-	1	1	36	3.4
Delivery/solo runs into the penalty area	-	0	0	14	1.4
Tackles gaining the ball	-	0	0	4	0.4
Tackles not gaining the ball	-	0	0	0	0.0
Tackles suffered losing the ball	-	0	0	1	0.1
Tackles suffered not losing the ball	-	0	0	2	0.2
Clearances Completed	-	0	0	3	0.3
Clearances Attempted	-	0	0	9	0.9

Passing distribution



Direction of play →

Received passing distribution

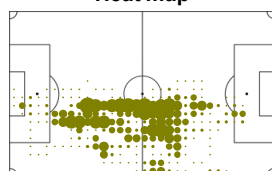


Direction of play →

Activities

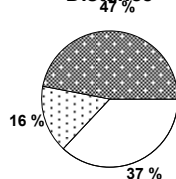
	1st half	2nd half	Total	Team total	Team avg
Total time played (mins)	0'00"	11'34"	11'34"		
Low activity time spent (%)	0%	65%	65%	78%	
Medium activity time spent (%)	0%	13%	13%	10%	
High activity time spent (%)	0%	22%	22%	12%	
Distance covered (metres)	-	1,852	1,852	121,508	11,065
Low activity distance covered (metres)	-	679	679	63,586	5,790
Medium activity distance covered (metres)	-	296	296	20,829	1,897
High activity distance covered (metres)	-	877	877	37,091	3,378
Top speed (km/h)	-	20.75	20.75	28.39	21.86
Sprints	-	34	34	1546	178

Heat map



Direction of play →

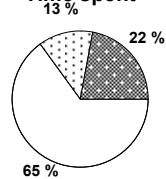
Distance



Activity



Time spent



FIFA does not vouch for the accuracy of technical statistics compiled in association with its competition results system partner.

THU 24 JUN 2010; 12:22 CET / 12:22 local time - Version 2

Page1/0

2010 FIFA World Cup South Africa™

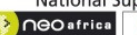
FIFA Partners



FIFA World Cup Sponsors



National Supporters



Player Statistics



Group D

Australia - Serbia 2:1 (0:0)

Nelspruit / Mbombela Stadium / RSA



Australia
21 David CARNEY
Defender

	1st half	2nd half	Total	Team total	Team avg
Goal(s) scored	0	0	0	2	
Attempts on/off target	0	0	0	12	
Assist(s)	0	0	0	1	
Offside(s)	0	0	0	1	
Save(s)	0	0	0	5	
Yellow card(s)	0	0	0	3	
Red card	0	0	0	0	
Foul(s) committed	0	2	2	25	
Delivery/solo runs into the attacking third	2	5	7	36	3.4
Delivery/solo runs into the penalty area	2	1	3	14	1.4
Tackles gaining the ball	1	0	1	4	0.4
Tackles not gaining the ball	0	0	0	0	0.0
Tackles suffered losing the ball	0	0	0	1	0.1
Tackles suffered not losing the ball	0	0	0	2	0.2
Clearances Completed	0	0	0	3	0.3
Clearances Attempted	0	0	0	9	0.9

Passing distribution



Direction of play →

Received passing distribution

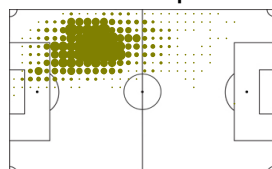


Direction of play →

Activities

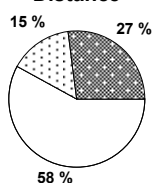
	1st half	2nd half	Total	Team total	Team avg
Total time played (mins)	45'59"	48'14"	94'13"		
Low activity time spent (%)	78%	81%	80%	78%	
Medium activity time spent (%)	10%	9%	9%	10%	
High activity time spent (%)	12%	10%	11%	12%	
Distance covered (metres)	5,749	5,722	11,471	121,508	11,065
Low activity distance covered (metres)	3,287	3,312	6,599	63,586	5,790
Medium activity distance covered (metres)	885	862	1,747	20,829	1,897
High activity distance covered (metres)	1,577	1,547	3,124	37,091	3,378
Top speed (km/h)	22.98	22.44	22.98	28.39	21.86
Sprints	50	67	117	1546	178

Heat map



Direction of play →

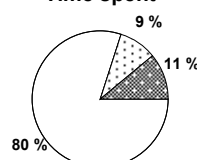
Distance



Activity



Time spent



FIFA does not vouch for the accuracy of technical statistics compiled in association with its competition results system partner.

THU 24 JUN 2010; 12:22 CET / 12:22 local time - Version 2

Page1/0

2010 FIFA World Cup South Africa™

FIFA Partners



FIFA World Cup Sponsors



National Supporters



Player Statistics



Group D

Australia - Serbia 2:1 (0:0)

Nelspruit / Mbombela Stadium / RSA



Australia
23 Marco BRESCIANO
 Forward

	1st half	2nd half	Total	Team total	Team avg
Goal(s) scored	0	0	0	2	
Attempts on/off target	0	2	2	12	
Assist(s)	0	0	0	1	
Offside(s)	0	0	0	1	
Save(s)	0	0	0	5	
Yellow card(s)	0	0	0	3	
Red card	0	0	0	0	
Foul(s) committed	1	0	1	25	
Delivery/solo runs into the attacking third	1	1	2	36	3.4
Delivery/solo runs into the penalty area	1	1	2	14	1.4
Tackles gaining the ball	0	0	0	4	0.4
Tackles not gaining the ball	0	0	0	0	0.0
Tackles suffered losing the ball	0	0	0	1	0.1
Tackles suffered not losing the ball	1	0	1	2	0.2
Clearances Completed	0	0	0	3	0.3
Clearances Attempted	0	0	0	9	0.9

Passing distribution



Direction of play →

Received passing distribution

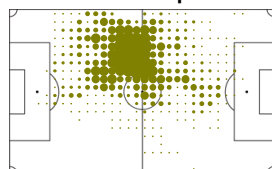


Direction of play →

Activities

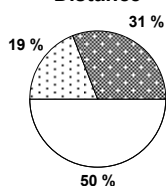
	1st half	2nd half	Total	Team total	Team avg
Total time played (mins)	45'59"	20'19"	66'18"		
Low activity time spent (%)	72%	74%	73%	78%	
Medium activity time spent (%)	13%	12%	13%	10%	
High activity time spent (%)	15%	14%	14%	12%	
Distance covered (metres)	5,999	2,691	8,690	121,508	11,065
Low activity distance covered (metres)	3,063	1,317	4,380	63,586	5,790
Medium activity distance covered (metres)	1,126	510	1,636	20,829	1,897
High activity distance covered (metres)	1,811	864	2,675	37,091	3,378
Top speed (km/h)	19.63	19.25	19.63	28.39	21.86
Sprints	77	38	115	1546	178

Heat map



Direction of play →

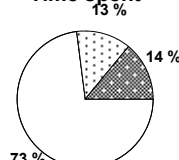
Distance



Activity



Time spent



FIFA does not vouch for the accuracy of technical statistics compiled in association with its competition results system partner.

THU 24 JUN 2010; 12:22 CET / 12:22 local time - Version 2

Page1/0

2010 FIFA World Cup South Africa™

FIFA Partners



FIFA World Cup Sponsors



National Supporters



