

Player Statistics



Group D

Australia - Serbia 2:1 (0:0)

Nelspruit / Mbombela Stadium / RSA



Serbia
1 Vladimir STOJKOVIC
Goalkeeper

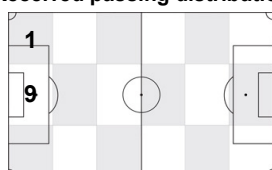
	1st half	2nd half	Total	Team total	Team avg
Goal(s) scored	0	0	0	1	
Attempts on/off target	0	0	0	18	
Assist(s)	0	0	0	0	
Offside(s)	0	0	0	7	
Save(s)	1	4	5	5	
Yellow card(s)	0	0	0	2	
Red card	0	0	0	0	
Foul(s) committed	0	0	0	10	
Delivery/solo runs into the attacking third	2	0	2	54	5.2
Delivery/solo runs into the penalty area	0	0	0	12	1.2
Tackles gaining the ball	0	0	0	1	0.1
Tackles not gaining the ball	0	0	0	2	0.2
Tackles suffered losing the ball	0	0	0	4	0.4
Tackles suffered not losing the ball	0	0	0	0	0.0
Clearances Completed	0	0	0	2	0.2
Clearances Attempted	0	0	0	9	0.9

Passing distribution



Direction of play →

Received passing distribution

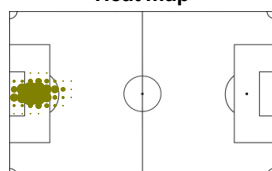


Direction of play →

Activities

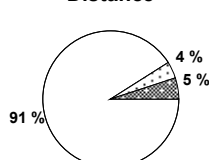
	1st half	2nd half	Total	Team total	Team avg
Total time played (mins)	45'59"	48'14"	94'13"		
Low activity time spent (%)	98%	98%	98%	80%	
Medium activity time spent (%)	1%	1%	1%	10%	
High activity time spent (%)	1%	1%	1%	10%	
Distance covered (metres)	2,798	3,074	5,872	117,075	10,690
Low activity distance covered (metres)	2,588	2,747	5,335	64,937	5,929
Medium activity distance covered (metres)	113	137	250	20,113	1,837
High activity distance covered (metres)	97	191	288	32,023	2,924
Top speed (km/h)	14.95	22.71	22.71	29.01	23.52
Sprints	2	5	7	1164	134

Heat map



Direction of play →

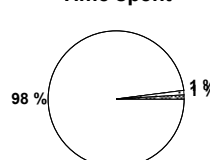
Distance



Activity



Time spent



FIFA does not vouch for the accuracy of technical statistics compiled in association with its competition results system partner.

THU 24 JUN 2010; 12:22 CET / 12:22 local time - Version 2

Page1/0

2010 FIFA World Cup South Africa™

FIFA Partners



FIFA World Cup Sponsors



National Supporters



Player Statistics



Group D

Australia - Serbia 2:1 (0:0)

Nelspruit / Mbombela Stadium / RSA



Serbia
5 Nemanja VIDIC
Defender

	1st half	2nd half	Total	Team total	Team avg
Goal(s) scored	0	0	0	1	
Attempts on/off target	0	0	0	18	
Assist(s)	0	0	0	0	
Offside(s)	0	0	0	7	
Save(s)	0	0	0	5	
Yellow card(s)	0	0	0	2	
Red card	0	0	0	0	
Foul(s) committed	0	1	1	10	
Delivery/solo runs into the attacking third	2	2	4	54	5.2
Delivery/solo runs into the penalty area	0	0	0	12	1.2
Tackles gaining the ball	0	0	0	1	0.1
Tackles not gaining the ball	0	0	0	2	0.2
Tackles suffered losing the ball	0	0	0	4	0.4
Tackles suffered not losing the ball	0	0	0	0	0.0
Clearances Completed	0	0	0	2	0.2
Clearances Attempted	1	1	2	9	0.9

Passing distribution



Direction of play →

Received passing distribution

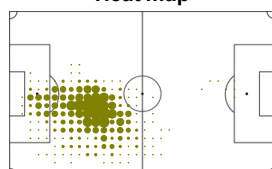


Direction of play →

Activities

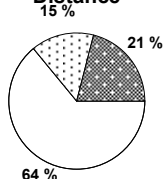
	1st half	2nd half	Total	Team total	Team avg
Total time played (mins)	45'59"	48'14"	94'13"		
Low activity time spent (%)	85%	87%	86%	80%	
Medium activity time spent (%)	9%	6%	8%	10%	
High activity time spent (%)	6%	7%	6%	10%	
Distance covered (metres)	4,710	4,399	9,109	117,075	10,690
Low activity distance covered (metres)	3,075	2,737	5,812	64,937	5,929
Medium activity distance covered (metres)	794	615	1,409	20,113	1,837
High activity distance covered (metres)	840	1,047	1,887	32,023	2,924
Top speed (km/h)	19.45	21.68	21.68	29.01	23.52
Sprints	19	38	57	1164	134

Heat map



Direction of play →

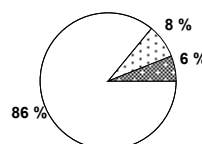
Distance



Activity



Time spent



FIFA does not vouch for the accuracy of technical statistics compiled in association with its competition results system partner.

THU 24 JUN 2010; 12:22 CET / 12:22 local time - Version 2

Page1/0

2010 FIFA World Cup South Africa™

FIFA Partners



FIFA World Cup Sponsors



National Supporters



Player Statistics



Group D

Australia - Serbia 2:1 (0:0)

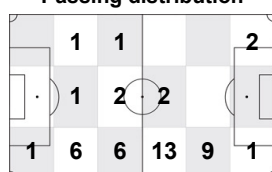
Nelspruit / Mbombela Stadium / RSA



Serbia
6 Branislav IVANOVIC
Defender

	1st half	2nd half	Total	Team total	Team avg
Goal(s) scored	0	0	0	1	
Attempts on/off target	2	0	2	18	
Assist(s)	0	0	0	0	
Offside(s)	0	0	0	7	
Save(s)	0	0	0	5	
Yellow card(s)	0	0	0	2	
Red card	0	0	0	0	
Foul(s) committed	0	0	0	10	
Delivery/solo runs into the attacking third	8	3	11	54	5.2
Delivery/solo runs into the penalty area	1	0	1	12	1.2
Tackles gaining the ball	0	0	0	1	0.1
Tackles not gaining the ball	0	0	0	2	0.2
Tackles suffered losing the ball	1	0	1	4	0.4
Tackles suffered not losing the ball	0	0	0	0	0.0
Clearances Completed	0	0	0	2	0.2
Clearances Attempted	0	2	2	9	0.9

Passing distribution



Direction of play →

Received passing distribution

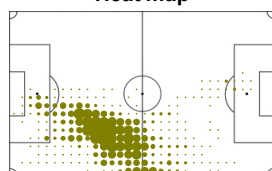


Direction of play →

Activities

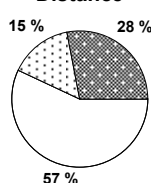
	1st half	2nd half	Total	Team total	Team avg
Total time played (mins)	45'59"	48'14"	94'13"		
Low activity time spent (%)	80%	85%	83%	80%	
Medium activity time spent (%)	10%	7%	8%	10%	
High activity time spent (%)	10%	8%	9%	10%	
Distance covered (metres)	4,994	5,060	10,054	117,075	10,690
Low activity distance covered (metres)	2,903	2,856	5,759	64,937	5,929
Medium activity distance covered (metres)	854	699	1,553	20,113	1,837
High activity distance covered (metres)	1,237	1,504	2,741	32,023	2,924
Top speed (km/h)	20.83	20.83	20.83	29.01	23.52
Sprints	49	58	107	1164	134

Heat map



Direction of play →

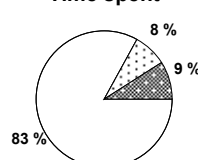
Distance



Activity



Time spent



FIFA does not vouch for the accuracy of technical statistics compiled in association with its competition results system partner.

THU 24 JUN 2010; 12:22 CET / 12:22 local time - Version 2

Page1/0

2010 FIFA World Cup South Africa™

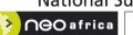
FIFA Partners



FIFA World Cup Sponsors



National Supporters



Player Statistics



Group D

Australia - Serbia 2:1 (0:0)

Nelspruit / Mbombela Stadium / RSA



Serbia
7 Zoran TOSIC
Midfield

	1st half	2nd half	Total	Team total	Team avg
Goal(s) scored	0	0	0	1	
Attempts on/off target	0	4	4	18	
Assist(s)	0	0	0	0	
Offside(s)	0	0	0	7	
Save(s)	0	0	0	5	
Yellow card(s)	0	0	0	2	
Red card	0	0	0	0	
Foul(s) committed	0	0	0	10	
Delivery/solo runs into the attacking third	-	2	2	54	5.2
Delivery/solo runs into the penalty area	-	1	1	12	1.2
Tackles gaining the ball	-	0	0	1	0.1
Tackles not gaining the ball	-	0	0	2	0.2
Tackles suffered losing the ball	-	1	1	4	0.4
Tackles suffered not losing the ball	-	0	0	0	0.0
Clearances Completed	-	0	0	2	0.2
Clearances Attempted	-	0	0	9	0.9

Passing distribution



Direction of play →

Received passing distribution

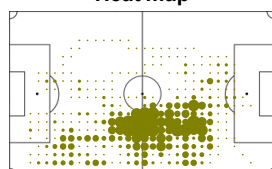


Direction of play →

Activities

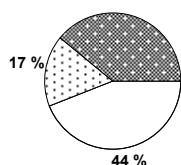
	1st half	2nd half	Total	Team total	Team avg
Total time played (mins)	0'00"	31'41"	31'41"		
Low activity time spent (%)	0%	73%	73%	80%	
Medium activity time spent (%)	0%	12%	12%	10%	
High activity time spent (%)	0%	15%	15%	10%	
Distance covered (metres)	-	4,249	4,249	117,075	10,690
Low activity distance covered (metres)	-	1,890	1,890	64,937	5,929
Medium activity distance covered (metres)	-	733	733	20,113	1,837
High activity distance covered (metres)	-	1,625	1,625	32,023	2,924
Top speed (km/h)	-	29.01	29.01	29.01	23.52
Sprints	-	76	76	1164	134

Heat map



Direction of play →

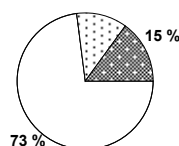
Distance
39%



Activity



Time spent
12%



FIFA does not vouch for the accuracy of technical statistics compiled in association with its competition results system partner.

THU 24 JUN 2010; 12:22 CET / 12:22 local time - Version 2

Page1/0

2010 FIFA World Cup South Africa™

FIFA Partners



FIFA World Cup Sponsors



National Supporters



Player Statistics



Group D

Australia - Serbia 2:1 (0:0)

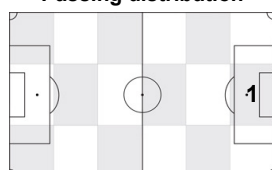
Nelspruit / Mbombela Stadium / RSA



Serbia
8 Danko LAZOVIC
 Forward

	1st half	2nd half	Total	Team total	Team avg
Goal(s) scored	0	0	0	1	
Attempts on/off target	0	1	1	18	
Assist(s)	0	0	0	0	
Offside(s)	0	0	0	7	
Save(s)	0	0	0	5	
Yellow card(s)	0	0	0	2	
Red card	0	0	0	0	
Foul(s) committed	0	1	1	10	
Delivery/solo runs into the attacking third	-	1	1	54	5.2
Delivery/solo runs into the penalty area	-	1	1	12	1.2
Tackles gaining the ball	-	0	0	1	0.1
Tackles not gaining the ball	-	0	0	2	0.2
Tackles suffered losing the ball	-	0	0	4	0.4
Tackles suffered not losing the ball	-	0	0	0	0.0
Clearances Completed	-	0	0	2	0.2
Clearances Attempted	-	0	0	9	0.9

Passing distribution



Direction of play →

Received passing distribution

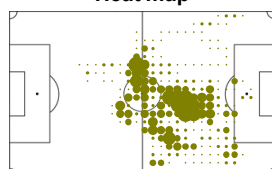


Direction of play →

Activities

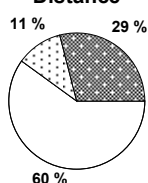
	1st half	2nd half	Total	Team total	Team avg
Total time played (mins)	0'00"	16'33"	16'33"		
Low activity time spent (%)	0%	83%	83%	80%	
Medium activity time spent (%)	0%	7%	7%	10%	
High activity time spent (%)	0%	10%	10%	10%	
Distance covered (metres)	-	1,750	1,750	117,075	10,690
Low activity distance covered (metres)	-	1,043	1,043	64,937	5,929
Medium activity distance covered (metres)	-	194	194	20,113	1,837
High activity distance covered (metres)	-	513	513	32,023	2,924
Top speed (km/h)	-	20.75	20.75	29.01	23.52
Sprints	-	27	27	1164	134

Heat map



Direction of play →

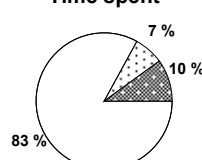
Distance



Activity



Time spent



FIFA does not vouch for the accuracy of technical statistics compiled in association with its competition results system partner.

THU 24 JUN 2010; 12:22 CET / 12:22 local time - Version 2

Page1/0

2010 FIFA World Cup South Africa™

FIFA Partners



FIFA World Cup Sponsors



National Supporters



Player Statistics



Group D

Australia - Serbia 2:1 (0:0)

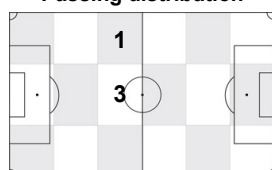
Nelspruit / Mbombela Stadium / RSA



Serbia
9 Marko PANTELIC
Forward

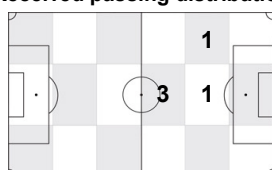
	1st half	2nd half	Total	Team total	Team avg
Goal(s) scored	0	1	1	1	
Attempts on/off target	0	1	1	18	
Assist(s)	0	0	0	0	
Offside(s)	0	2	2	7	
Save(s)	0	0	0	5	
Yellow card(s)	0	0	0	2	
Red card	0	0	0	0	
Foul(s) committed	0	0	0	10	
Delivery/solo runs into the attacking third	-	0	0	54	5.2
Delivery/solo runs into the penalty area	-	0	0	12	1.2
Tackles gaining the ball	-	0	0	1	0.1
Tackles not gaining the ball	-	0	0	2	0.2
Tackles suffered losing the ball	-	0	0	4	0.4
Tackles suffered not losing the ball	-	0	0	0	0.0
Clearances Completed	-	0	0	2	0.2
Clearances Attempted	-	0	0	9	0.9

Passing distribution



Direction of play →

Received passing distribution

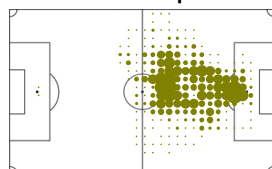


Direction of play →

Activities

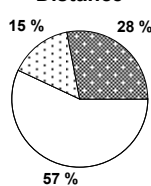
	1st half	2nd half	Total	Team total	Team avg
Total time played (mins)	0'00"	26'23"	26'23"		
Low activity time spent (%)	0%	82%	82%	80%	
Medium activity time spent (%)	0%	9%	9%	10%	
High activity time spent (%)	0%	9%	9%	10%	
Distance covered (metres)	-	2,837	2,837	117,075	10,690
Low activity distance covered (metres)	-	1,606	1,606	64,937	5,929
Medium activity distance covered (metres)	-	419	419	20,113	1,837
High activity distance covered (metres)	-	812	812	32,023	2,924
Top speed (km/h)	-	25.69	25.69	29.01	23.52
Sprints	-	37	37	1164	134

Heat map



Direction of play →

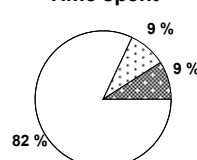
Distance



Activity



Time spent



FIFA does not vouch for the accuracy of technical statistics compiled in association with its competition results system partner.

THU 24 JUN 2010; 12:22 CET / 12:22 local time - Version 2

Page1/0

2010 FIFA World Cup South Africa™

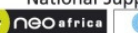
FIFA Partners



FIFA World Cup Sponsors



National Supporters



Player Statistics



Group D

Australia - Serbia 2:1 (0:0)

Nelspruit / Mbombela Stadium / RSA



Serbia
10 Dejan STANKOVIC
 Midfield

	1st half	2nd half	Total	Team total	Team avg
Goal(s) scored	0	0	0	1	
Attempts on/off target	1	2	3	18	
Assist(s)	0	0	0	0	
Offside(s)	0	0	0	7	
Save(s)	0	0	0	5	
Yellow card(s)	0	0	0	2	
Red card	0	0	0	0	
Foul(s) committed	1	0	1	10	
Delivery/solo runs into the attacking third	3	3	6	54	5.2
Delivery/solo runs into the penalty area	0	1	1	12	1.2
Tackles gaining the ball	1	0	1	1	0.1
Tackles not gaining the ball	0	0	0	2	0.2
Tackles suffered losing the ball	0	0	0	4	0.4
Tackles suffered not losing the ball	0	0	0	0	0.0
Clearances Completed	0	1	1	2	0.2
Clearances Attempted	0	1	1	9	0.9

Passing distribution



Direction of play →

Received passing distribution

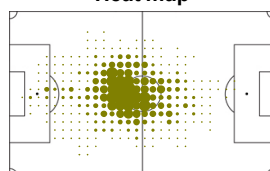


Direction of play →

Activities

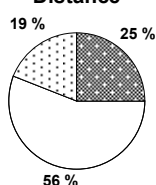
	1st half	2nd half	Total	Team total	Team avg
Total time played (mins)	45'59"	48'14"	94'13"		
Low activity time spent (%)	76%	79%	77%	80%	
Medium activity time spent (%)	13%	10%	12%	10%	
High activity time spent (%)	11%	11%	11%	10%	
Distance covered (metres)	5,757	5,730	11,487	117,075	10,690
Low activity distance covered (metres)	3,262	3,204	6,466	64,937	5,929
Medium activity distance covered (metres)	1,168	1,035	2,203	20,113	1,837
High activity distance covered (metres)	1,327	1,491	2,818	32,023	2,924
Top speed (km/h)	23.81	22.49	23.81	29.01	23.52
Sprints	26	53	79	1164	134

Heat map

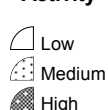


Direction of play →

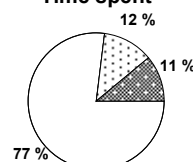
Distance



Activity



Time spent



FIFA does not vouch for the accuracy of technical statistics compiled in association with its competition results system partner.

THU 24 JUN 2010; 12:22 CET / 12:22 local time - Version 2

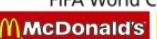
Page1/0

2010 FIFA World Cup South Africa™

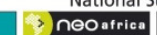
FIFA Partners



FIFA World Cup Sponsors



National Supporters



Player Statistics



Group D

Australia - Serbia 2:1 (0:0)

Nelspruit / Mbombela Stadium / RSA



Serbia
13 Aleksandar LUKOVIC
 Defender

	1st half	2nd half	Total	Team total	Team avg
Goal(s) scored	0	0	0	1	
Attempts on/off target	0	1	1	18	
Assist(s)	0	0	0	0	
Offside(s)	0	0	0	7	
Save(s)	0	0	0	5	
Yellow card(s)	1	0	1	2	
Red card	0	0	0	0	
Foul(s) committed	1	0	1	10	
Delivery/solo runs into the attacking third	4	2	6	54	5.2
Delivery/solo runs into the penalty area	1	1	2	12	1.2
Tackles gaining the ball	0	0	0	1	0.1
Tackles not gaining the ball	0	0	0	2	0.2
Tackles suffered losing the ball	0	0	0	4	0.4
Tackles suffered not losing the ball	0	0	0	0	0.0
Clearances Completed	0	0	0	2	0.2
Clearances Attempted	0	0	0	9	0.9

Passing distribution



Direction of play →

Received passing distribution

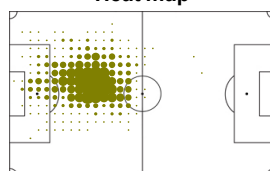


Direction of play →

Activities

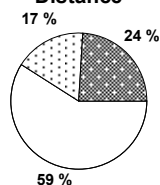
	1st half	2nd half	Total	Team total	Team avg
Total time played (mins)	45'59"	48'14"	94'13"		
Low activity time spent (%)	81%	86%	83%	80%	
Medium activity time spent (%)	11%	7%	9%	10%	
High activity time spent (%)	8%	7%	8%	10%	
Distance covered (metres)	4,937	4,713	9,650	117,075	10,690
Low activity distance covered (metres)	2,887	2,816	5,703	64,937	5,929
Medium activity distance covered (metres)	1,008	641	1,649	20,113	1,837
High activity distance covered (metres)	1,042	1,256	2,298	32,023	2,924
Top speed (km/h)	19.15	25.99	25.99	29.01	23.52
Sprints	20	59	79	1164	134

Heat map



Direction of play →

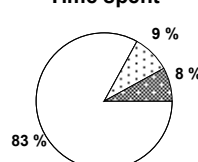
Distance



Activity



Time spent



FIFA does not vouch for the accuracy of technical statistics compiled in association with its competition results system partner.

THU 24 JUN 2010; 12:22 CET / 12:22 local time - Version 2

Page1/0

2010 FIFA World Cup South Africa™

FIFA Partners



FIFA World Cup Sponsors



National Supporters



Player Statistics



Group D

Australia - Serbia 2:1 (0:0)

Nelspruit / Mbombela Stadium / RSA



Serbia
14 Milan JOVANOVIC
 Midfield

	1st half	2nd half	Total	Team total	Team avg
Goal(s) scored	0	0	0	1	
Attempts on/off target	0	0	0	18	
Assist(s)	0	0	0	0	
Offside(s)	0	1	1	7	
Save(s)	0	0	0	5	
Yellow card(s)	0	0	0	2	
Red card	0	0	0	0	
Foul(s) committed	1	0	1	10	
Delivery/solo runs into the attacking third	1	3	4	54	5.2
Delivery/solo runs into the penalty area	1	1	2	12	1.2
Tackles gaining the ball	0	0	0	1	0.1
Tackles not gaining the ball	0	0	0	2	0.2
Tackles suffered losing the ball	0	0	0	4	0.4
Tackles suffered not losing the ball	0	0	0	0	0.0
Clearances Completed	0	0	0	2	0.2
Clearances Attempted	0	0	0	9	0.9

Passing distribution



Direction of play →

Received passing distribution

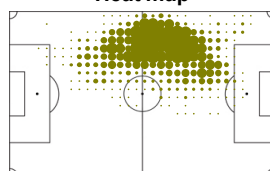


Direction of play →

Activities

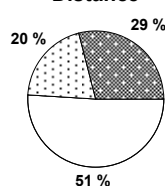
	1st half	2nd half	Total	Team total	Team avg
Total time played (mins)	45'59"	48'14"	94'13"		
Low activity time spent (%)	75%	77%	76%	80%	
Medium activity time spent (%)	13%	11%	12%	10%	
High activity time spent (%)	12%	12%	12%	10%	
Distance covered (metres)	6,212	6,258	12,470	117,075	10,690
Low activity distance covered (metres)	3,301	3,088	6,389	64,937	5,929
Medium activity distance covered (metres)	1,188	1,294	2,482	20,113	1,837
High activity distance covered (metres)	1,722	1,877	3,599	32,023	2,924
Top speed (km/h)	19.87	23.84	23.84	29.01	23.52
Sprints	65	75	140	1164	134

Heat map



Direction of play →

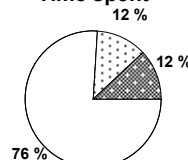
Distance



Activity



Time spent



FIFA does not vouch for the accuracy of technical statistics compiled in association with its competition results system partner.

THU 24 JUN 2010; 12:22 CET / 12:22 local time - Version 2

Page1/0

2010 FIFA World Cup South Africa™

FIFA Partners



FIFA World Cup Sponsors



National Supporters



Player Statistics



Group D

Australia - Serbia 2:1 (0:0)

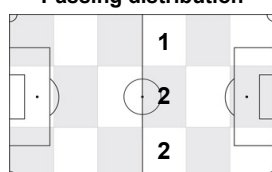
Nelspruit / Mbombela Stadium / RSA



Serbia
15 Nikola ZIGIC
 Forward

	1st half	2nd half	Total	Team total	Team avg
Goal(s) scored	0	0	0	1	
Attempts on/off target	1	1	2	18	
Assist(s)	0	0	0	0	
Offside(s)	1	1	2	7	
Save(s)	0	0	0	5	
Yellow card(s)	0	0	0	2	
Red card	0	0	0	0	
Foul(s) committed	0	2	2	10	
Delivery/solo runs into the attacking third	0	0	0	54	5.2
Delivery/solo runs into the penalty area	0	0	0	12	1.2
Tackles gaining the ball	0	0	0	1	0.1
Tackles not gaining the ball	0	0	0	2	0.2
Tackles suffered losing the ball	0	0	0	4	0.4
Tackles suffered not losing the ball	0	0	0	0	0.0
Clearances Completed	0	0	0	2	0.2
Clearances Attempted	0	0	0	9	0.9

Passing distribution



Direction of play →

Received passing distribution

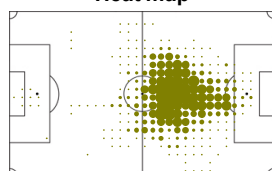


Direction of play →

Activities

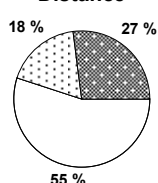
	1st half	2nd half	Total	Team total	Team avg
Total time played (mins)	45'59"	21'51"	67'50"		
Low activity time spent (%)	77%	83%	80%	80%	
Medium activity time spent (%)	11%	8%	10%	10%	
High activity time spent (%)	12%	9%	10%	10%	
Distance covered (metres)	5,508	2,270	7,778	117,075	10,690
Low activity distance covered (metres)	2,935	1,363	4,298	64,937	5,929
Medium activity distance covered (metres)	1,055	340	1,395	20,113	1,837
High activity distance covered (metres)	1,519	568	2,087	32,023	2,924
Top speed (km/h)	21.95	20.83	21.95	29.01	23.52
Sprints	55	16	71	1164	134

Heat map



Direction of play →

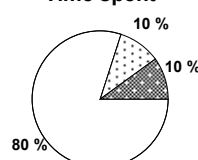
Distance



Activity



Time spent



FIFA does not vouch for the accuracy of technical statistics compiled in association with its competition results system partner.

THU 24 JUN 2010; 12:22 CET / 12:22 local time - Version 2

Page1/0

2010 FIFA World Cup South Africa™

FIFA Partners



FIFA World Cup Sponsors



National Supporters



Player Statistics



Group D

Australia - Serbia 2:1 (0:0)

Nelspruit / Mbombela Stadium / RSA



Serbia
16 Ivan OBRADOVIC
 Defender

	1st half	2nd half	Total	Team total	Team avg
Goal(s) scored	0	0	0	1	
Attempts on/off target	0	0	0	18	
Assist(s)	0	0	0	0	
Offside(s)	0	0	0	7	
Save(s)	0	0	0	5	
Yellow card(s)	0	0	0	2	
Red card	0	0	0	0	
Foul(s) committed	0	0	0	10	
Delivery/solo runs into the attacking third	0	0	0	54	5.2
Delivery/solo runs into the penalty area	1	0	1	12	1.2
Tackles gaining the ball	0	0	0	1	0.1
Tackles not gaining the ball	0	0	0	2	0.2
Tackles suffered losing the ball	0	0	0	4	0.4
Tackles suffered not losing the ball	0	0	0	0	0.0
Clearances Completed	1	0	1	2	0.2
Clearances Attempted	1	0	1	9	0.9

Passing distribution



Direction of play →

Received passing distribution

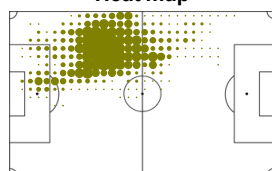


Direction of play →

Activities

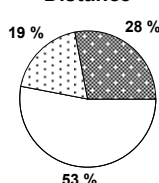
	1st half	2nd half	Total	Team total	Team avg
Total time played (mins)	45'59"	48'14"	94'13"		
Low activity time spent (%)	77%	80%	79%	80%	
Medium activity time spent (%)	12%	10%	11%	10%	
High activity time spent (%)	11%	10%	10%	10%	
Distance covered (metres)	5,428	5,360	10,788	117,075	10,690
Low activity distance covered (metres)	3,027	2,701	5,728	64,937	5,929
Medium activity distance covered (metres)	1,004	998	2,002	20,113	1,837
High activity distance covered (metres)	1,398	1,661	3,059	32,023	2,924
Top speed (km/h)	28.15	23.21	28.15	29.01	23.52
Sprints	46	58	104	1164	134

Heat map



Direction of play →

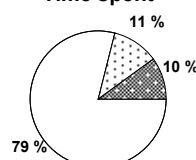
Distance



Activity



Time spent



FIFA does not vouch for the accuracy of technical statistics compiled in association with its competition results system partner.

THU 24 JUN 2010; 12:22 CET / 12:22 local time - Version 2

Page1/0

2010 FIFA World Cup South Africa™

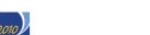
FIFA Partners



FIFA World Cup Sponsors



National Supporters



Player Statistics



Group D

Australia - Serbia 2:1 (0:0)

Nelspruit / Mbombela Stadium / RSA



Serbia
17 Milos KRASIC
Midfield

	1st half	2nd half	Total	Team total	Team avg
Goal(s) scored	0	0	0	1	
Attempts on/off target	2	0	2	18	
Assist(s)	0	0	0	0	
Offside(s)	1	0	1	7	
Save(s)	0	0	0	5	
Yellow card(s)	0	0	0	2	
Red card	0	0	0	0	
Foul(s) committed	0	0	0	10	
Delivery/solo runs into the attacking third	6	0	6	54	5.2
Delivery/solo runs into the penalty area	0	1	1	12	1.2
Tackles gaining the ball	0	0	0	1	0.1
Tackles not gaining the ball	0	0	0	2	0.2
Tackles suffered losing the ball	1	0	1	4	0.4
Tackles suffered not losing the ball	0	0	0	0	0.0
Clearances Completed	0	0	0	2	0.2
Clearances Attempted	2	0	2	9	0.9

Passing distribution



Direction of play →

Received passing distribution

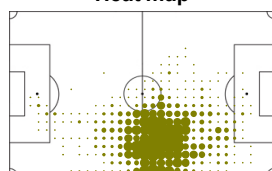


Direction of play →

Activities

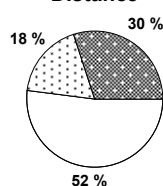
	1st half	2nd half	Total	Team total	Team avg
Total time played (mins)	45'59"	16'33"	62'32"		
Low activity time spent (%)	77%	71%	75%	80%	
Medium activity time spent (%)	9%	14%	11%	10%	
High activity time spent (%)	14%	15%	14%	10%	
Distance covered (metres)	5,834	2,292	8,126	117,075	10,690
Low activity distance covered (metres)	3,104	1,082	4,186	64,937	5,929
Medium activity distance covered (metres)	950	482	1,432	20,113	1,837
High activity distance covered (metres)	1,780	727	2,507	32,023	2,924
Top speed (km/h)	20.27	20.79	20.79	29.01	23.52
Sprints	68	21	89	1164	134

Heat map



Direction of play →

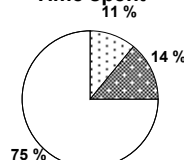
Distance



Activity



Time spent



FIFA does not vouch for the accuracy of technical statistics compiled in association with its competition results system partner.

THU 24 JUN 2010; 12:22 CET / 12:22 local time - Version 2

Page1/0

2010 FIFA World Cup South Africa™

FIFA Partners



FIFA World Cup Sponsors



National Supporters



Player Statistics



Group D

Australia - Serbia 2:1 (0:0)

Nelspruit / Mbombela Stadium / RSA



Serbia
18 Milos NINKOVIC
 Midfield

	1st half	2nd half	Total	Team total	Team avg
Goal(s) scored	0	0	0	1	
Attempts on/off target	0	0	0	18	
Assist(s)	0	0	0	0	
Offside(s)	0	0	0	7	
Save(s)	0	0	0	5	
Yellow card(s)	0	1	1	2	
Red card	0	0	0	0	
Foul(s) committed	1	1	2	10	
Delivery/solo runs into the attacking third	4	4	8	54	5.2
Delivery/solo runs into the penalty area	0	0	0	12	1.2
Tackles gaining the ball	0	0	0	1	0.1
Tackles not gaining the ball	1	1	2	2	0.2
Tackles suffered losing the ball	0	0	0	4	0.4
Tackles suffered not losing the ball	0	0	0	0	0.0
Clearances Completed	0	0	0	2	0.2
Clearances Attempted	1	0	1	9	0.9

Passing distribution



Direction of play →

Received passing distribution

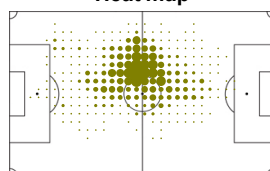


Direction of play →

Activities

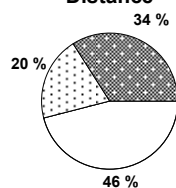
	1st half	2nd half	Total	Team total	Team avg
Total time played (mins)	45'59"	48'14"	94'13"		
Low activity time spent (%)	67%	75%	71%	80%	
Medium activity time spent (%)	15%	12%	13%	10%	
High activity time spent (%)	18%	13%	16%	10%	
Distance covered (metres)	6,627	6,246	12,873	117,075	10,690
Low activity distance covered (metres)	2,999	2,972	5,971	64,937	5,929
Medium activity distance covered (metres)	1,334	1,202	2,536	20,113	1,837
High activity distance covered (metres)	2,294	2,071	4,365	32,023	2,924
Top speed (km/h)	22.05	21.56	22.05	29.01	23.52
Sprints	77	81	158	1164	134

Heat map



Direction of play →

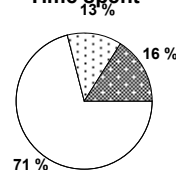
Distance



Activity



Time spent



FIFA does not vouch for the accuracy of technical statistics compiled in association with its competition results system partner.

THU 24 JUN 2010; 12:22 CET / 12:22 local time - Version 2

Page1/0

2010 FIFA World Cup South Africa™

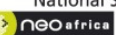
FIFA Partners



FIFA World Cup Sponsors



National Supporters



Player Statistics



Group D

Australia - Serbia 2:1 (0:0)

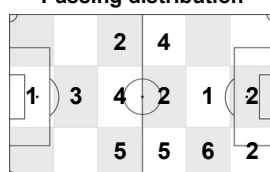
Nelspruit / Mbombela Stadium / RSA



Serbia
22 Zdravko KUZMANOVIC
 Midfield

	1st half	2nd half	Total	Team total	Team avg
Goal(s) scored	0	0	0	1	
Attempts on/off target	1	1	2	18	
Assist(s)	0	0	0	0	
Offside(s)	1	0	1	7	
Save(s)	0	0	0	5	
Yellow card(s)	0	0	0	2	
Red card	0	0	0	0	
Foul(s) committed	1	0	1	10	
Delivery/solo runs into the attacking third	1	3	4	54	5.2
Delivery/solo runs into the penalty area	1	1	2	12	1.2
Tackles gaining the ball	0	0	0	1	0.1
Tackles not gaining the ball	0	0	0	2	0.2
Tackles suffered losing the ball	1	0	1	4	0.4
Tackles suffered not losing the ball	0	0	0	0	0.0
Clearances Completed	0	0	0	2	0.2
Clearances Attempted	0	0	0	9	0.9

Passing distribution



Direction of play →

Received passing distribution

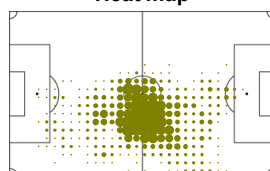


Direction of play →

Activities

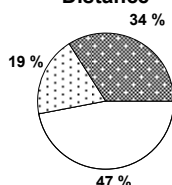
	1st half	2nd half	Total	Team total	Team avg
Total time played (mins)	45'59"	31'41"	77'40"		
Low activity time spent (%)	70%	77%	73%	80%	
Medium activity time spent (%)	13%	10%	12%	10%	
High activity time spent (%)	17%	13%	15%	10%	
Distance covered (metres)	6,276	3,756	10,032	117,075	10,690
Low activity distance covered (metres)	2,937	1,814	4,751	64,937	5,929
Medium activity distance covered (metres)	1,188	668	1,856	20,113	1,837
High activity distance covered (metres)	2,150	1,274	3,424	32,023	2,924
Top speed (km/h)	22.07	18.53	22.07	29.01	23.52
Sprints	77	56	133	1164	134

Heat map



Direction of play →

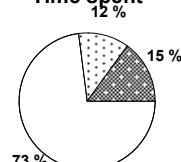
Distance



Activity



Time spent



FIFA does not vouch for the accuracy of technical statistics compiled in association with its competition results system partner.

THU 24 JUN 2010; 12:22 CET / 12:22 local time - Version 2

Page1/0

2010 FIFA World Cup South Africa™

FIFA Partners



FIFA World Cup Sponsors



National Supporters

