

Player Statistics



Group E

Japan - Cameroon 1:0 (1:0)

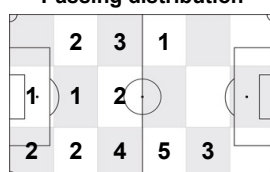
Mangaung/Bloemfontein / Free State Stadium / RSA



Japan
2 Yuki ABE
Midfield

| | 1st half | 2nd half | Total | Team total | Team avg |
|---|----------|----------|-------|------------|----------|
| Goal(s) scored | 0 | 0 | 0 | 1 | |
| Attempts on/off target | 0 | 0 | 0 | 5 | |
| Assist(s) | 0 | 0 | 0 | 1 | |
| Offside(s) | 0 | 0 | 0 | 4 | |
| Save(s) | 0 | 0 | 0 | 0 | |
| Yellow card(s) | 0 | 1 | 1 | 1 | |
| Red card | 0 | 0 | 0 | 0 | |
| Foul(s) committed | 1 | 1 | 2 | 20 | |
| Delivery/solo runs into the attacking third | 3 | 1 | 4 | 23 | 2.0 |
| Delivery/solo runs into the penalty area | 0 | 0 | 0 | 2 | 0.2 |
| Tackles gaining the ball | 0 | 0 | 0 | 0 | 0.0 |
| Tackles not gaining the ball | 0 | 0 | 0 | 0 | 0.0 |
| Tackles suffered losing the ball | 0 | 0 | 0 | 0 | 0.0 |
| Tackles suffered not losing the ball | 0 | 0 | 0 | 0 | 0.0 |
| Clearances Completed | 0 | 0 | 0 | 0 | 0.0 |
| Clearances Attempted | 0 | 0 | 0 | 1 | 0.1 |

Passing distribution



Direction of play →

Received passing distribution

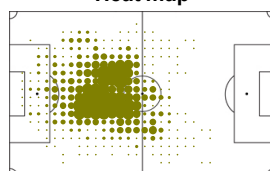


Direction of play →

Activities

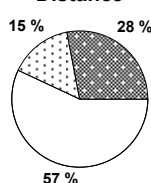
| | 1st half | 2nd half | Total | Team total | Team avg |
|---|----------|----------|--------|------------|----------|
| Total time played (mins) | 47'12" | 49'06" | 96'18" | | |
| Low activity time spent (%) | 81% | 81% | 81% | 83% | |
| Medium activity time spent (%) | 9% | 8% | 9% | 8% | |
| High activity time spent (%) | 10% | 11% | 10% | 9% | |
| Distance covered (metres) | 5,350 | 5,242 | 10,592 | 109,940 | 10,584 |
| Low activity distance covered (metres) | 3,103 | 2,983 | 6,086 | 65,811 | 6,203 |
| Medium activity distance covered (metres) | 878 | 756 | 1,634 | 17,306 | 1,717 |
| High activity distance covered (metres) | 1,369 | 1,503 | 2,872 | 26,824 | 2,665 |
| Top speed (km/h) | 27.09 | 23.16 | 27.09 | 30.13 | 25.15 |
| Sprints | 58 | 56 | 114 | 971 | 116 |

Heat map



Direction of play →

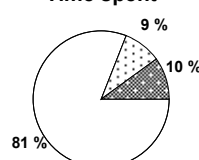
Distance



Activity



Time spent



FIFA does not vouch for the accuracy of technical statistics compiled in association with its competition results system partner.

MON 14 JUN 2010; 18:01 CET / 18:01 local time - Version 1

Page1/0

2010 FIFA World Cup South Africa™

FIFA Partners



FIFA World Cup Sponsors



National Supporters



Player Statistics



Group E

Japan - Cameroon 1:0 (1:0)

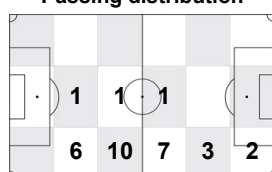
Mangaung/Bloemfontein / Free State Stadium / RSA



Japan
3 Yuichi KOMANO
 Defender

| | 1st half | 2nd half | Total | Team total | Team avg |
|---|----------|----------|-------|------------|----------|
| Goal(s) scored | 0 | 0 | 0 | 1 | |
| Attempts on/off target | 0 | 0 | 0 | 5 | |
| Assist(s) | 0 | 0 | 0 | 1 | |
| Offside(s) | 0 | 0 | 0 | 4 | |
| Save(s) | 0 | 0 | 0 | 0 | |
| Yellow card(s) | 0 | 0 | 0 | 1 | |
| Red card | 0 | 0 | 0 | 0 | |
| Foul(s) committed | 2 | 0 | 2 | 20 | |
| Delivery/solo runs into the attacking third | 2 | 3 | 5 | 23 | 2.0 |
| Delivery/solo runs into the penalty area | 0 | 0 | 0 | 2 | 0.2 |
| Tackles gaining the ball | 0 | 0 | 0 | 0 | 0.0 |
| Tackles not gaining the ball | 0 | 0 | 0 | 0 | 0.0 |
| Tackles suffered losing the ball | 0 | 0 | 0 | 0 | 0.0 |
| Tackles suffered not losing the ball | 0 | 0 | 0 | 0 | 0.0 |
| Clearances Completed | 0 | 0 | 0 | 0 | 0.0 |
| Clearances Attempted | 0 | 0 | 0 | 1 | 0.1 |

Passing distribution



Direction of play →

Received passing distribution



Direction of play →

Activities

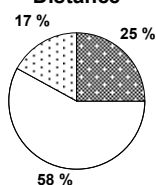
| | 1st half | 2nd half | Total | Team total | Team avg |
|---|----------|----------|--------|------------|----------|
| Total time played (mins) | 47'12" | 49'06" | 96'18" | | |
| Low activity time spent (%) | 80% | 84% | 82% | 83% | |
| Medium activity time spent (%) | 10% | 8% | 9% | 8% | |
| High activity time spent (%) | 10% | 8% | 9% | 9% | |
| Distance covered (metres) | 5,419 | 4,978 | 10,397 | 109,940 | 10,584 |
| Low activity distance covered (metres) | 2,978 | 3,032 | 6,010 | 65,811 | 6,203 |
| Medium activity distance covered (metres) | 933 | 821 | 1,754 | 17,306 | 1,717 |
| High activity distance covered (metres) | 1,507 | 1,126 | 2,633 | 26,824 | 2,665 |
| Top speed (km/h) | 25.77 | 23.82 | 25.77 | 30.13 | 25.15 |
| Sprints | 70 | 34 | 104 | 971 | 116 |

Heat map

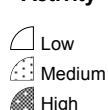


Direction of play →

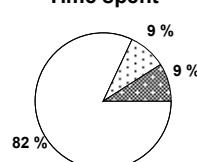
Distance



Activity



Time spent



FIFA does not vouch for the accuracy of technical statistics compiled in association with its competition results system partner.

MON 14 JUN 2010; 18:01 CET / 18:01 local time - Version 1

Page1/0

2010 FIFA World Cup South Africa™

FIFA Partners



FIFA World Cup Sponsors



National Supporters



Player Statistics



Group E

Japan - Cameroon 1:0 (1:0)

Mangaung/Bloemfontein / Free State Stadium / RSA



Japan
4 Marcus Tulio TANAKA
 Defender

| | 1st half | 2nd half | Total | Team total | Team avg |
|---|----------|----------|-------|------------|----------|
| Goal(s) scored | 0 | 0 | 0 | 1 | |
| Attempts on/off target | 0 | 0 | 0 | 5 | |
| Assist(s) | 0 | 0 | 0 | 1 | |
| Offside(s) | 0 | 0 | 0 | 4 | |
| Save(s) | 0 | 0 | 0 | 0 | |
| Yellow card(s) | 0 | 0 | 0 | 1 | |
| Red card | 0 | 0 | 0 | 0 | |
| Foul(s) committed | 0 | 2 | 2 | 20 | |
| Delivery/solo runs into the attacking third | 0 | 0 | 0 | 23 | 2.0 |
| Delivery/solo runs into the penalty area | 0 | 0 | 0 | 2 | 0.2 |
| Tackles gaining the ball | 0 | 0 | 0 | 0 | 0.0 |
| Tackles not gaining the ball | 0 | 0 | 0 | 0 | 0.0 |
| Tackles suffered losing the ball | 0 | 0 | 0 | 0 | 0.0 |
| Tackles suffered not losing the ball | 0 | 0 | 0 | 0 | 0.0 |
| Clearances Completed | 0 | 0 | 0 | 0 | 0.0 |
| Clearances Attempted | 0 | 0 | 0 | 1 | 0.1 |

Passing distribution



Direction of play →

Received passing distribution

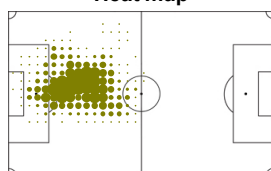


Direction of play →

Activities

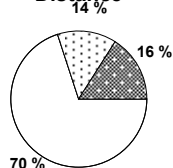
| | 1st half | 2nd half | Total | Team total | Team avg |
|---|----------|----------|--------|------------|----------|
| Total time played (mins) | 47'12" | 49'06" | 96'18" | | |
| Low activity time spent (%) | 90% | 87% | 88% | 83% | |
| Medium activity time spent (%) | 6% | 6% | 6% | 8% | |
| High activity time spent (%) | 4% | 7% | 6% | 9% | |
| Distance covered (metres) | 4,314 | 4,800 | 9,114 | 109,940 | 10,584 |
| Low activity distance covered (metres) | 3,088 | 3,277 | 6,365 | 65,811 | 6,203 |
| Medium activity distance covered (metres) | 598 | 654 | 1,252 | 17,306 | 1,717 |
| High activity distance covered (metres) | 628 | 869 | 1,497 | 26,824 | 2,665 |
| Top speed (km/h) | 20.55 | 27.35 | 27.35 | 30.13 | 25.15 |
| Sprints | 18 | 27 | 45 | 971 | 116 |

Heat map



Direction of play →

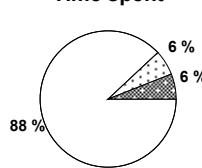
Distance



Activity



Time spent



FIFA does not vouch for the accuracy of technical statistics compiled in association with its competition results system partner.

MON 14 JUN 2010; 18:01 CET / 18:01 local time - Version 1

Page1/0

2010 FIFA World Cup South Africa™

FIFA Partners



FIFA World Cup Sponsors



National Supporters



Player Statistics



Group E

Japan - Cameroon 1:0 (1:0)

Mangaung/Bloemfontein / Free State Stadium / RSA



Japan
5 Yuto NAGATOMO
Defender

| | 1st half | 2nd half | Total | Team total | Team avg |
|---|----------|----------|-------|------------|----------|
| Goal(s) scored | 0 | 0 | 0 | 1 | |
| Attempts on/off target | 0 | 0 | 0 | 5 | |
| Assist(s) | 0 | 0 | 0 | 1 | |
| Offside(s) | 0 | 0 | 0 | 4 | |
| Save(s) | 0 | 0 | 0 | 0 | |
| Yellow card(s) | 0 | 0 | 0 | 1 | |
| Red card | 0 | 0 | 0 | 0 | |
| Foul(s) committed | 0 | 3 | 3 | 20 | |
| Delivery/solo runs into the attacking third | 0 | 0 | 0 | 23 | 2.0 |
| Delivery/solo runs into the penalty area | 0 | 1 | 1 | 2 | 0.2 |
| Tackles gaining the ball | 0 | 0 | 0 | 0 | 0.0 |
| Tackles not gaining the ball | 0 | 0 | 0 | 0 | 0.0 |
| Tackles suffered losing the ball | 0 | 0 | 0 | 0 | 0.0 |
| Tackles suffered not losing the ball | 0 | 0 | 0 | 0 | 0.0 |
| Clearances Completed | 0 | 0 | 0 | 0 | 0.0 |
| Clearances Attempted | 1 | 0 | 1 | 1 | 0.1 |

Passing distribution



Direction of play →

Received passing distribution

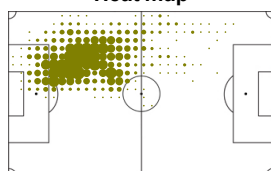


Direction of play →

Activities

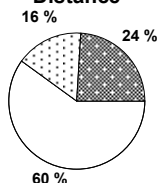
| | 1st half | 2nd half | Total | Team total | Team avg |
|---|----------|----------|--------|------------|----------|
| Total time played (mins) | 47'12" | 49'06" | 96'18" | | |
| Low activity time spent (%) | 81% | 83% | 82% | 83% | |
| Medium activity time spent (%) | 11% | 8% | 9% | 8% | |
| High activity time spent (%) | 8% | 9% | 9% | 9% | |
| Distance covered (metres) | 5,351 | 5,532 | 10,883 | 109,940 | 10,584 |
| Low activity distance covered (metres) | 3,197 | 3,383 | 6,580 | 65,811 | 6,203 |
| Medium activity distance covered (metres) | 969 | 807 | 1,776 | 17,306 | 1,717 |
| High activity distance covered (metres) | 1,184 | 1,343 | 2,527 | 26,824 | 2,665 |
| Top speed (km/h) | 22.47 | 30.13 | 30.13 | 30.13 | 25.15 |
| Sprints | 41 | 44 | 85 | 971 | 116 |

Heat map

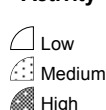


Direction of play →

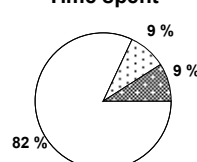
Distance



Activity



Time spent



FIFA does not vouch for the accuracy of technical statistics compiled in association with its competition results system partner.

MON 14 JUN 2010; 18:01 CET / 18:01 local time - Version 1

Page1/0

2010 FIFA World Cup South Africa™

FIFA Partners



FIFA World Cup Sponsors



National Supporters



Player Statistics



Group E

Japan - Cameroon 1:0 (1:0)

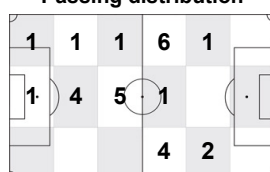
Mangaung/Bloemfontein / Free State Stadium / RSA



Japan
7 Yasuhito ENDO
 Midfield

| | 1st half | 2nd half | Total | Team total | Team avg |
|---|----------|----------|-------|------------|----------|
| Goal(s) scored | 0 | 0 | 0 | 1 | |
| Attempts on/off target | 0 | 0 | 0 | 5 | |
| Assist(s) | 0 | 0 | 0 | 1 | |
| Offside(s) | 0 | 0 | 0 | 4 | |
| Save(s) | 0 | 0 | 0 | 0 | |
| Yellow card(s) | 0 | 0 | 0 | 1 | |
| Red card | 0 | 0 | 0 | 0 | |
| Foul(s) committed | 1 | 0 | 1 | 20 | |
| Delivery/solo runs into the attacking third | 2 | 1 | 3 | 23 | 2.0 |
| Delivery/solo runs into the penalty area | 0 | 0 | 0 | 2 | 0.2 |
| Tackles gaining the ball | 0 | 0 | 0 | 0 | 0.0 |
| Tackles not gaining the ball | 0 | 0 | 0 | 0 | 0.0 |
| Tackles suffered losing the ball | 0 | 0 | 0 | 0 | 0.0 |
| Tackles suffered not losing the ball | 0 | 0 | 0 | 0 | 0.0 |
| Clearances Completed | 0 | 0 | 0 | 0 | 0.0 |
| Clearances Attempted | 0 | 0 | 0 | 1 | 0.1 |

Passing distribution



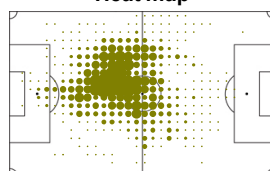
Received passing distribution



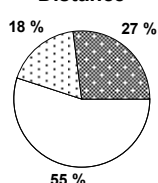
Activities

| | 1st half | 2nd half | Total | Team total | Team avg |
|---|----------|----------|--------|------------|----------|
| Total time played (mins) | 47'12" | 49'06" | 96'18" | | |
| Low activity time spent (%) | 81% | 77% | 79% | 83% | |
| Medium activity time spent (%) | 9% | 12% | 10% | 8% | |
| High activity time spent (%) | 10% | 11% | 11% | 9% | |
| Distance covered (metres) | 5,341 | 5,923 | 11,264 | 109,940 | 10,584 |
| Low activity distance covered (metres) | 3,060 | 3,095 | 6,155 | 65,811 | 6,203 |
| Medium activity distance covered (metres) | 856 | 1,173 | 2,029 | 17,306 | 1,717 |
| High activity distance covered (metres) | 1,425 | 1,654 | 3,079 | 26,824 | 2,665 |
| Top speed (km/h) | 21.88 | 24.71 | 24.71 | 30.13 | 25.15 |
| Sprints | 53 | 44 | 97 | 971 | 116 |

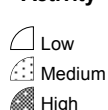
Heat map



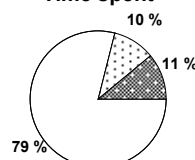
Distance



Activity



Time spent



FIFA does not vouch for the accuracy of technical statistics compiled in association with its competition results system partner.

MON 14 JUN 2010; 18:01 CET / 18:01 local time - Version 1

Page1/0

2010 FIFA World Cup South Africa™

FIFA Partners



FIFA World Cup Sponsors



National Supporters



Player Statistics



Group E

Japan - Cameroon 1:0 (1:0)

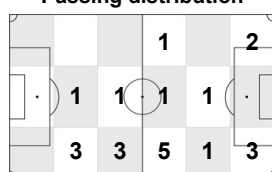
Mangaung/Bloemfontein / Free State Stadium / RSA



Japan
8 Daisuke MATSUI
Midfield

| | 1st half | 2nd half | Total | Team total | Team avg |
|---|----------|----------|-------|------------|----------|
| Goal(s) scored | 0 | 0 | 0 | 1 | |
| Attempts on/off target | 1 | 0 | 1 | 5 | |
| Assist(s) | 1 | 0 | 1 | 1 | |
| Offside(s) | 2 | 0 | 2 | 4 | |
| Save(s) | 0 | 0 | 0 | 0 | |
| Yellow card(s) | 0 | 0 | 0 | 1 | |
| Red card | 0 | 0 | 0 | 0 | |
| Foul(s) committed | 3 | 1 | 4 | 20 | |
| Delivery/solo runs into the attacking third | 0 | 1 | 1 | 23 | 2.0 |
| Delivery/solo runs into the penalty area | 0 | 1 | 1 | 2 | 0.2 |
| Tackles gaining the ball | 0 | 0 | 0 | 0 | 0.0 |
| Tackles not gaining the ball | 0 | 0 | 0 | 0 | 0.0 |
| Tackles suffered losing the ball | 0 | 0 | 0 | 0 | 0.0 |
| Tackles suffered not losing the ball | 0 | 0 | 0 | 0 | 0.0 |
| Clearances Completed | 0 | 0 | 0 | 0 | 0.0 |
| Clearances Attempted | 0 | 0 | 0 | 1 | 0.1 |

Passing distribution



Direction of play →

Received passing distribution

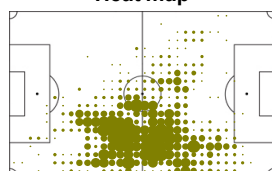


Direction of play →

Activities

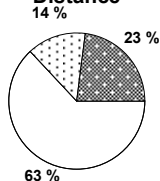
| | 1st half | 2nd half | Total | Team total | Team avg |
|---|----------|----------|--------|------------|----------|
| Total time played (mins) | 47'12" | 23'13" | 70'25" | | |
| Low activity time spent (%) | 83% | 85% | 84% | 83% | |
| Medium activity time spent (%) | 8% | 7% | 8% | 8% | |
| High activity time spent (%) | 9% | 8% | 8% | 9% | |
| Distance covered (metres) | 5,414 | 2,603 | 8,017 | 109,940 | 10,584 |
| Low activity distance covered (metres) | 3,418 | 1,635 | 5,053 | 65,811 | 6,203 |
| Medium activity distance covered (metres) | 784 | 317 | 1,101 | 17,306 | 1,717 |
| High activity distance covered (metres) | 1,211 | 651 | 1,862 | 26,824 | 2,665 |
| Top speed (km/h) | 21.08 | 24.32 | 24.32 | 30.13 | 25.15 |
| Sprints | 65 | 30 | 95 | 971 | 116 |

Heat map



Direction of play →

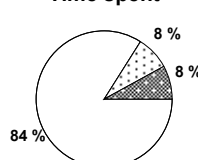
Distance



Activity



Time spent



FIFA does not vouch for the accuracy of technical statistics compiled in association with its competition results system partner.

MON 14 JUN 2010; 18:01 CET / 18:01 local time - Version 1

Page1/0

2010 FIFA World Cup South Africa™

FIFA Partners



FIFA World Cup Sponsors



National Supporters



Player Statistics



Group E

Japan - Cameroon 1:0 (1:0)

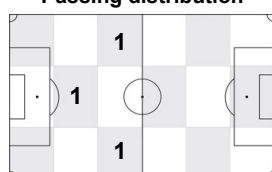
Mangaung/Bloemfontein / Free State Stadium / RSA



Japan
9 Shinji OKAZAKI
 Forward

| | 1st half | 2nd half | Total | Team total | Team avg |
|---|----------|----------|-------|------------|----------|
| Goal(s) scored | 0 | 0 | 0 | 1 | |
| Attempts on/off target | 0 | 1 | 1 | 5 | |
| Assist(s) | 0 | 0 | 0 | 1 | |
| Offside(s) | 0 | 0 | 0 | 4 | |
| Save(s) | 0 | 0 | 0 | 0 | |
| Yellow card(s) | 0 | 0 | 0 | 1 | |
| Red card | 0 | 0 | 0 | 0 | |
| Foul(s) committed | 0 | 1 | 1 | 20 | |
| Delivery/solo runs into the attacking third | - | 0 | 0 | 23 | 2.0 |
| Delivery/solo runs into the penalty area | - | 0 | 0 | 2 | 0.2 |
| Tackles gaining the ball | - | 0 | 0 | 0 | 0.0 |
| Tackles not gaining the ball | - | 0 | 0 | 0 | 0.0 |
| Tackles suffered losing the ball | - | 0 | 0 | 0 | 0.0 |
| Tackles suffered not losing the ball | - | 0 | 0 | 0 | 0.0 |
| Clearances Completed | - | 0 | 0 | 0 | 0.0 |
| Clearances Attempted | - | 0 | 0 | 1 | 0.1 |

Passing distribution



Direction of play →

Received passing distribution

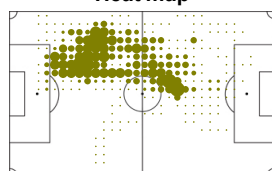


Direction of play →

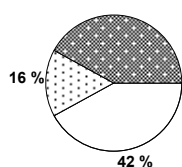
Activities

| | 1st half | 2nd half | Total | Team total | Team avg |
|---|----------|----------|--------|------------|----------|
| Total time played (mins) | 0'00" | 25'53" | 25'53" | | |
| Low activity time spent (%) | 0% | 72% | 72% | 83% | |
| Medium activity time spent (%) | 0% | 11% | 11% | 8% | |
| High activity time spent (%) | 0% | 17% | 17% | 9% | |
| Distance covered (metres) | - | 3,572 | 3,572 | 109,940 | 10,584 |
| Low activity distance covered (metres) | - | 1,509 | 1,509 | 65,811 | 6,203 |
| Medium activity distance covered (metres) | - | 583 | 583 | 17,306 | 1,717 |
| High activity distance covered (metres) | - | 1,480 | 1,480 | 26,824 | 2,665 |
| Top speed (km/h) | - | 24.09 | 24.09 | 30.13 | 25.15 |
| Sprints | - | 71 | 71 | 971 | 116 |

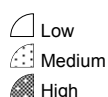
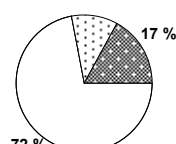
Heat map



Direction of play →

Distance
42%

Activity

Time spent
11%

FIFA does not vouch for the accuracy of technical statistics compiled in association with its competition results system partner.

MON 14 JUN 2010; 18:01 CET / 18:01 local time - Version 1

Page1/0

2010 FIFA World Cup South Africa™

FIFA Partners



FIFA World Cup Sponsors



National Supporters



Player Statistics



Group E

Japan - Cameroon 1:0 (1:0)

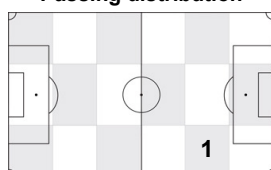
Mangaung/Bloemfontein / Free State Stadium / RSA



Japan
12 Kisho YANO
Forward

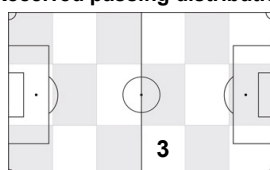
| | 1st half | 2nd half | Total | Team total | Team avg |
|---|----------|----------|-------|------------|----------|
| Goal(s) scored | 0 | 0 | 0 | 1 | |
| Attempts on/off target | 0 | 0 | 0 | 5 | |
| Assist(s) | 0 | 0 | 0 | 1 | |
| Offside(s) | 0 | 0 | 0 | 4 | |
| Save(s) | 0 | 0 | 0 | 0 | |
| Yellow card(s) | 0 | 0 | 0 | 1 | |
| Red card | 0 | 0 | 0 | 0 | |
| Foul(s) committed | 0 | 0 | 0 | 20 | |
| Delivery/solo runs into the attacking third | - | 1 | 1 | 23 | 2.0 |
| Delivery/solo runs into the penalty area | - | 0 | 0 | 2 | 0.2 |
| Tackles gaining the ball | - | 0 | 0 | 0 | 0.0 |
| Tackles not gaining the ball | - | 0 | 0 | 0 | 0.0 |
| Tackles suffered losing the ball | - | 0 | 0 | 0 | 0.0 |
| Tackles suffered not losing the ball | - | 0 | 0 | 0 | 0.0 |
| Clearances Completed | - | 0 | 0 | 0 | 0.0 |
| Clearances Attempted | - | 0 | 0 | 1 | 0.1 |

Passing distribution



Direction of play →

Received passing distribution

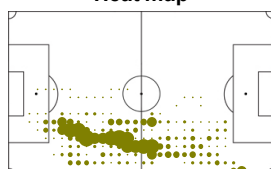


Direction of play →

Activities

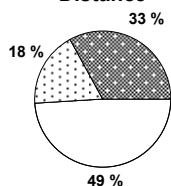
| | 1st half | 2nd half | Total | Team total | Team avg |
|---|----------|----------|--------|------------|----------|
| Total time played (mins) | 0'00" | 12'57" | 12'57" | | |
| Low activity time spent (%) | 0% | 74% | 74% | 83% | |
| Medium activity time spent (%) | 0% | 11% | 11% | 8% | |
| High activity time spent (%) | 0% | 15% | 15% | 9% | |
| Distance covered (metres) | - | 1,662 | 1,662 | 109,940 | 10,584 |
| Low activity distance covered (metres) | - | 821 | 821 | 65,811 | 6,203 |
| Medium activity distance covered (metres) | - | 291 | 291 | 17,306 | 1,717 |
| High activity distance covered (metres) | - | 550 | 550 | 26,824 | 2,665 |
| Top speed (km/h) | - | 24.53 | 24.53 | 30.13 | 25.15 |
| Sprints | - | 22 | 22 | 971 | 116 |

Heat map

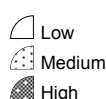


Direction of play →

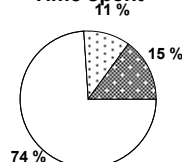
Distance



Activity



Time spent



FIFA does not vouch for the accuracy of technical statistics compiled in association with its competition results system partner.

MON 14 JUN 2010; 18:01 CET / 18:01 local time - Version 1

Page1/0

2010 FIFA World Cup South Africa™

FIFA Partners



FIFA World Cup Sponsors



National Supporters



Player Statistics



Group E

Japan - Cameroon 1:0 (1:0)

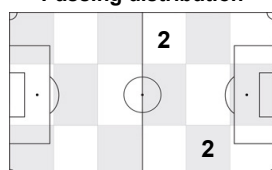
Mangaung/Bloemfontein / Free State Stadium / RSA



Japan
16 Yoshito OKUBO
Forward

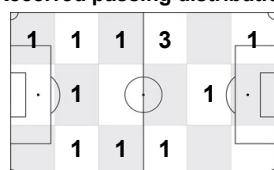
| | 1st half | 2nd half | Total | Team total | Team avg |
|---|----------|----------|-------|------------|----------|
| Goal(s) scored | 0 | 0 | 0 | 1 | |
| Attempts on/off target | 0 | 0 | 0 | 5 | |
| Assist(s) | 0 | 0 | 0 | 1 | |
| Offside(s) | 1 | 0 | 1 | 4 | |
| Save(s) | 0 | 0 | 0 | 0 | |
| Yellow card(s) | 0 | 0 | 0 | 1 | |
| Red card | 0 | 0 | 0 | 0 | |
| Foul(s) committed | 0 | 0 | 0 | 20 | |
| Delivery/solo runs into the attacking third | 0 | 1 | 1 | 23 | 2.0 |
| Delivery/solo runs into the penalty area | 0 | 0 | 0 | 2 | 0.2 |
| Tackles gaining the ball | 0 | 0 | 0 | 0 | 0.0 |
| Tackles not gaining the ball | 0 | 0 | 0 | 0 | 0.0 |
| Tackles suffered losing the ball | 0 | 0 | 0 | 0 | 0.0 |
| Tackles suffered not losing the ball | 0 | 0 | 0 | 0 | 0.0 |
| Clearances Completed | 0 | 0 | 0 | 0 | 0.0 |
| Clearances Attempted | 0 | 0 | 0 | 1 | 0.1 |

Passing distribution



Direction of play →

Received passing distribution

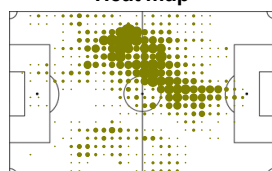


Direction of play →

Activities

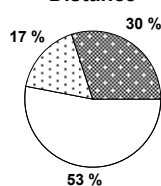
| | 1st half | 2nd half | Total | Team total | Team avg |
|---|----------|----------|--------|------------|----------|
| Total time played (mins) | 47'12" | 36'09" | 83'21" | | |
| Low activity time spent (%) | 82% | 78% | 80% | 83% | |
| Medium activity time spent (%) | 8% | 11% | 9% | 8% | |
| High activity time spent (%) | 10% | 11% | 11% | 9% | |
| Distance covered (metres) | 5,202 | 4,099 | 9,301 | 109,940 | 10,584 |
| Low activity distance covered (metres) | 2,793 | 2,113 | 4,906 | 65,811 | 6,203 |
| Medium activity distance covered (metres) | 833 | 772 | 1,605 | 17,306 | 1,717 |
| High activity distance covered (metres) | 1,577 | 1,214 | 2,791 | 26,824 | 2,665 |
| Top speed (km/h) | 28.38 | 25.94 | 28.38 | 30.13 | 25.15 |
| Sprints | 63 | 31 | 94 | 971 | 116 |

Heat map



Direction of play →

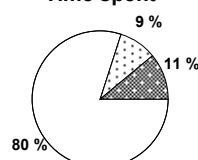
Distance



Activity



Time spent



FIFA does not vouch for the accuracy of technical statistics compiled in association with its competition results system partner.

MON 14 JUN 2010; 18:01 CET / 18:01 local time - Version 1

Page1/0

2010 FIFA World Cup South Africa™

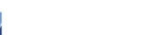
FIFA Partners



FIFA World Cup Sponsors



National Supporters



Player Statistics



Group E

Japan - Cameroon 1:0 (1:0)

Mangaung/Bloemfontein / Free State Stadium / RSA



Japan
17 Makoto HASEBE
Midfield

| | 1st half | 2nd half | Total | Team total | Team avg |
|---|----------|----------|-------|------------|----------|
| Goal(s) scored | 0 | 0 | 0 | 1 | |
| Attempts on/off target | 0 | 1 | 1 | 5 | |
| Assist(s) | 0 | 0 | 0 | 1 | |
| Offside(s) | 0 | 0 | 0 | 4 | |
| Save(s) | 0 | 0 | 0 | 0 | |
| Yellow card(s) | 0 | 0 | 0 | 1 | |
| Red card | 0 | 0 | 0 | 0 | |
| Foul(s) committed | 0 | 0 | 0 | 20 | |
| Delivery/solo runs into the attacking third | 1 | 1 | 2 | 23 | 2.0 |
| Delivery/solo runs into the penalty area | 0 | 0 | 0 | 2 | 0.2 |
| Tackles gaining the ball | 0 | 0 | 0 | 0 | 0.0 |
| Tackles not gaining the ball | 0 | 0 | 0 | 0 | 0.0 |
| Tackles suffered losing the ball | 0 | 0 | 0 | 0 | 0.0 |
| Tackles suffered not losing the ball | 0 | 0 | 0 | 0 | 0.0 |
| Clearances Completed | 0 | 0 | 0 | 0 | 0.0 |
| Clearances Attempted | 0 | 0 | 0 | 1 | 0.1 |

Passing distribution



Direction of play →

Received passing distribution

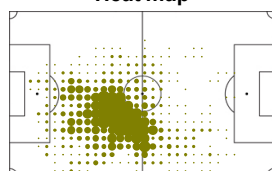


Direction of play →

Activities

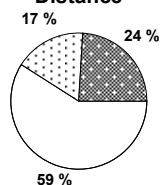
| | 1st half | 2nd half | Total | Team total | Team avg |
|---|----------|----------|--------|------------|----------|
| Total time played (mins) | 47'12" | 42'50" | 90'02" | | |
| Low activity time spent (%) | 81% | 83% | 82% | 83% | |
| Medium activity time spent (%) | 11% | 8% | 9% | 8% | |
| High activity time spent (%) | 8% | 9% | 9% | 9% | |
| Distance covered (metres) | 5,362 | 4,734 | 10,096 | 109,940 | 10,584 |
| Low activity distance covered (metres) | 3,137 | 2,861 | 5,998 | 65,811 | 6,203 |
| Medium activity distance covered (metres) | 1,012 | 743 | 1,755 | 17,306 | 1,717 |
| High activity distance covered (metres) | 1,214 | 1,130 | 2,344 | 26,824 | 2,665 |
| Top speed (km/h) | 21.29 | 26.70 | 26.70 | 30.13 | 25.15 |
| Sprints | 30 | 31 | 61 | 971 | 116 |

Heat map



Direction of play →

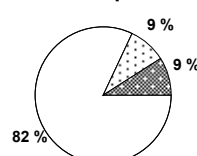
Distance



Activity



Time spent



FIFA does not vouch for the accuracy of technical statistics compiled in association with its competition results system partner.

MON 14 JUN 2010; 18:01 CET / 18:01 local time - Version 1

Page1/0

2010 FIFA World Cup South Africa™

FIFA Partners



FIFA World Cup Sponsors



National Supporters



Player Statistics



Group E

Japan - Cameroon 1:0 (1:0)

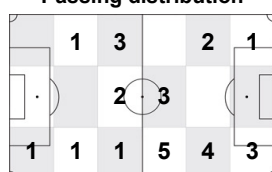
Mangaung/Bloemfontein / Free State Stadium / RSA



Japan
18 Keisuke HONDA
 Midfield

| | 1st half | 2nd half | Total | Team total | Team avg |
|---|----------|----------|-------|------------|----------|
| Goal(s) scored | 1 | 0 | 1 | 1 | |
| Attempts on/off target | 1 | 1 | 2 | 5 | |
| Assist(s) | 0 | 0 | 0 | 1 | |
| Offside(s) | 0 | 1 | 1 | 4 | |
| Save(s) | 0 | 0 | 0 | 0 | |
| Yellow card(s) | 0 | 0 | 0 | 1 | |
| Red card | 0 | 0 | 0 | 0 | |
| Foul(s) committed | 3 | 2 | 5 | 20 | |
| Delivery/solo runs into the attacking third | 1 | 1 | 2 | 23 | 2.0 |
| Delivery/solo runs into the penalty area | 0 | 0 | 0 | 2 | 0.2 |
| Tackles gaining the ball | 0 | 0 | 0 | 0 | 0.0 |
| Tackles not gaining the ball | 0 | 0 | 0 | 0 | 0.0 |
| Tackles suffered losing the ball | 0 | 0 | 0 | 0 | 0.0 |
| Tackles suffered not losing the ball | 0 | 0 | 0 | 0 | 0.0 |
| Clearances Completed | 0 | 0 | 0 | 0 | 0.0 |
| Clearances Attempted | 0 | 0 | 0 | 1 | 0.1 |

Passing distribution



Direction of play →

Received passing distribution

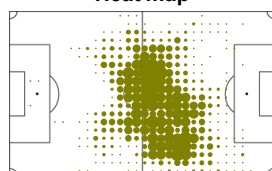


Direction of play →

Activities

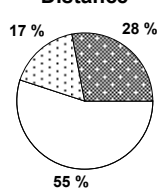
| | 1st half | 2nd half | Total | Team total | Team avg |
|---|----------|----------|--------|------------|----------|
| Total time played (mins) | 47'12" | 49'06" | 96'18" | | |
| Low activity time spent (%) | 80% | 78% | 79% | 83% | |
| Medium activity time spent (%) | 9% | 11% | 10% | 8% | |
| High activity time spent (%) | 11% | 11% | 11% | 9% | |
| Distance covered (metres) | 5,356 | 5,736 | 11,092 | 109,940 | 10,584 |
| Low activity distance covered (metres) | 2,937 | 3,159 | 6,096 | 65,811 | 6,203 |
| Medium activity distance covered (metres) | 836 | 1,013 | 1,849 | 17,306 | 1,717 |
| High activity distance covered (metres) | 1,583 | 1,564 | 3,147 | 26,824 | 2,665 |
| Top speed (km/h) | 21.48 | 21.88 | 21.88 | 30.13 | 25.15 |
| Sprints | 58 | 63 | 121 | 971 | 116 |

Heat map



Direction of play →

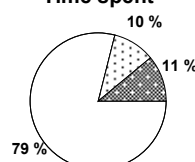
Distance



Activity



Time spent



FIFA does not vouch for the accuracy of technical statistics compiled in association with its competition results system partner.

MON 14 JUN 2010; 18:01 CET / 18:01 local time - Version 1

Page1/0

2010 FIFA World Cup South Africa™

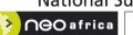
FIFA Partners



FIFA World Cup Sponsors



National Supporters



Player Statistics



Group E

Japan - Cameroon 1:0 (1:0)

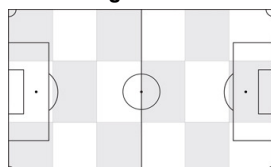
Mangaung/Bloemfontein / Free State Stadium / RSA



Japan
20 Junichi INAMOTO
 Midfield

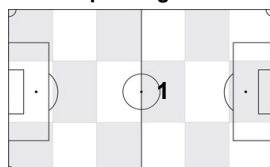
| | 1st half | 2nd half | Total | Team total | Team avg |
|---|----------|----------|-------|------------|----------|
| Goal(s) scored | 0 | 0 | 0 | 1 | |
| Attempts on/off target | 0 | 0 | 0 | 5 | |
| Assist(s) | 0 | 0 | 0 | 1 | |
| Offside(s) | 0 | 0 | 0 | 4 | |
| Save(s) | 0 | 0 | 0 | 0 | |
| Yellow card(s) | 0 | 0 | 0 | 1 | |
| Red card | 0 | 0 | 0 | 0 | |
| Foul(s) committed | 0 | 0 | 0 | 20 | |
| Delivery/solo runs into the attacking third | - | 0 | 0 | 23 | 2.0 |
| Delivery/solo runs into the penalty area | - | 0 | 0 | 2 | 0.2 |
| Tackles gaining the ball | - | 0 | 0 | 0 | 0.0 |
| Tackles not gaining the ball | - | 0 | 0 | 0 | 0.0 |
| Tackles suffered losing the ball | - | 0 | 0 | 0 | 0.0 |
| Tackles suffered not losing the ball | - | 0 | 0 | 0 | 0.0 |
| Clearances Completed | - | 0 | 0 | 0 | 0.0 |
| Clearances Attempted | - | 0 | 0 | 1 | 0.1 |

Passing distribution



Direction of play →

Received passing distribution

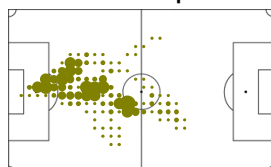


Direction of play →

Activities

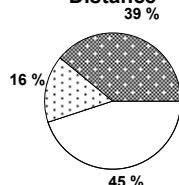
| | 1st half | 2nd half | Total | Team total | Team avg |
|---|----------|----------|-------|------------|----------|
| Total time played (mins) | 0'00" | 6'16" | 6'16" | | |
| Low activity time spent (%) | 0% | 74% | 74% | 83% | |
| Medium activity time spent (%) | 0% | 10% | 10% | 8% | |
| High activity time spent (%) | 0% | 16% | 16% | 9% | |
| Distance covered (metres) | - | 801 | 801 | 109,940 | 10,584 |
| Low activity distance covered (metres) | - | 362 | 362 | 65,811 | 6,203 |
| Medium activity distance covered (metres) | - | 127 | 127 | 17,306 | 1,717 |
| High activity distance covered (metres) | - | 313 | 313 | 26,824 | 2,665 |
| Top speed (km/h) | - | 18.76 | 18.76 | 30.13 | 25.15 |
| Sprints | - | 12 | 12 | 971 | 116 |

Heat map



Direction of play →

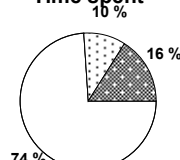
Distance



Activity



Time spent



FIFA does not vouch for the accuracy of technical statistics compiled in association with its competition results system partner.

MON 14 JUN 2010; 18:01 CET / 18:01 local time - Version 1

Page1/0

2010 FIFA World Cup South Africa™

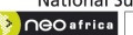
FIFA Partners



FIFA World Cup Sponsors



National Supporters



Player Statistics



Group E

Japan - Cameroon 1:0 (1:0)

Mangaung/Bloemfontein / Free State Stadium / RSA



Japan
21 Eiji KAWASHIMA
 Goalkeeper

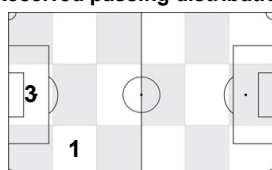
| | 1st half | 2nd half | Total | Team total | Team avg |
|---|----------|----------|-------|------------|----------|
| Goal(s) scored | 0 | 0 | 0 | 1 | |
| Attempts on/off target | 0 | 0 | 0 | 5 | |
| Assist(s) | 0 | 0 | 0 | 1 | |
| Offside(s) | 0 | 0 | 0 | 4 | |
| Save(s) | 0 | 0 | 0 | 0 | |
| Yellow card(s) | 0 | 0 | 0 | 1 | |
| Red card | 0 | 0 | 0 | 0 | |
| Foul(s) committed | 0 | 0 | 0 | 20 | |
| Delivery/solo runs into the attacking third | 2 | 1 | 3 | 23 | 2.0 |
| Delivery/solo runs into the penalty area | 0 | 0 | 0 | 2 | 0.2 |
| Tackles gaining the ball | 0 | 0 | 0 | 0 | 0.0 |
| Tackles not gaining the ball | 0 | 0 | 0 | 0 | 0.0 |
| Tackles suffered losing the ball | 0 | 0 | 0 | 0 | 0.0 |
| Tackles suffered not losing the ball | 0 | 0 | 0 | 0 | 0.0 |
| Clearances Completed | 0 | 0 | 0 | 0 | 0.0 |
| Clearances Attempted | 0 | 0 | 0 | 1 | 0.1 |

Passing distribution



Direction of play →

Received passing distribution

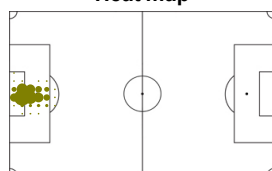


Direction of play →

Activities

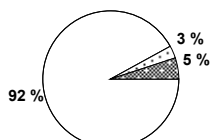
| | 1st half | 2nd half | Total | Team total | Team avg |
|---|----------|----------|--------|------------|----------|
| Total time played (mins) | 47'12" | 49'06" | 96'18" | | |
| Low activity time spent (%) | 98% | 99% | 99% | 83% | |
| Medium activity time spent (%) | 1% | 1% | 1% | 8% | |
| High activity time spent (%) | 1% | 0% | 0% | 9% | |
| Distance covered (metres) | 1,969 | 2,203 | 4,172 | 109,940 | 10,584 |
| Low activity distance covered (metres) | 1,796 | 2,032 | 3,828 | 65,811 | 6,203 |
| Medium activity distance covered (metres) | 75 | 71 | 146 | 17,306 | 1,717 |
| High activity distance covered (metres) | 98 | 99 | 197 | 26,824 | 2,665 |
| Top speed (km/h) | 14.48 | 12.41 | 14.48 | 30.13 | 25.15 |
| Sprints | 3 | 1 | 4 | 971 | 116 |

Heat map



Direction of play →

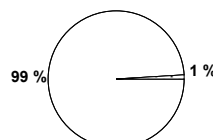
Distance



Activity



Time spent



FIFA does not vouch for the accuracy of technical statistics compiled in association with its competition results system partner.

MON 14 JUN 2010; 18:01 CET / 18:01 local time - Version 1

Page1/0

2010 FIFA World Cup South Africa™

FIFA Partners



FIFA World Cup Sponsors



National Supporters



Player Statistics



Group E

Japan - Cameroon 1:0 (1:0)

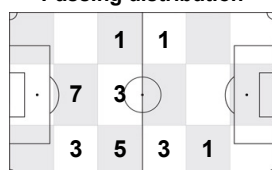
Mangaung/Bloemfontein / Free State Stadium / RSA



Japan
22 Yuji NAKAZAWA
Defender

| | 1st half | 2nd half | Total | Team total | Team avg |
|---|----------|----------|-------|------------|----------|
| Goal(s) scored | 0 | 0 | 0 | 1 | |
| Attempts on/off target | 0 | 0 | 0 | 5 | |
| Assist(s) | 0 | 0 | 0 | 1 | |
| Offside(s) | 0 | 0 | 0 | 4 | |
| Save(s) | 0 | 0 | 0 | 0 | |
| Yellow card(s) | 0 | 0 | 0 | 1 | |
| Red card | 0 | 0 | 0 | 0 | |
| Foul(s) committed | 0 | 0 | 0 | 20 | |
| Delivery/solo runs into the attacking third | 0 | 1 | 1 | 23 | 2.0 |
| Delivery/solo runs into the penalty area | 0 | 0 | 0 | 2 | 0.2 |
| Tackles gaining the ball | 0 | 0 | 0 | 0 | 0.0 |
| Tackles not gaining the ball | 0 | 0 | 0 | 0 | 0.0 |
| Tackles suffered losing the ball | 0 | 0 | 0 | 0 | 0.0 |
| Tackles suffered not losing the ball | 0 | 0 | 0 | 0 | 0.0 |
| Clearances Completed | 0 | 0 | 0 | 0 | 0.0 |
| Clearances Attempted | 0 | 0 | 0 | 1 | 0.1 |

Passing distribution



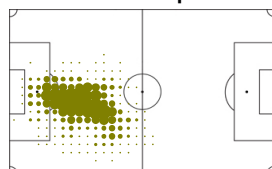
Received passing distribution



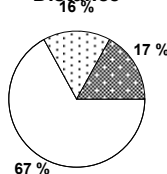
Activities

| | 1st half | 2nd half | Total | Team total | Team avg |
|---|----------|----------|--------|------------|----------|
| Total time played (mins) | 47'12" | 49'06" | 96'18" | | |
| Low activity time spent (%) | 88% | 87% | 87% | 83% | |
| Medium activity time spent (%) | 7% | 7% | 7% | 8% | |
| High activity time spent (%) | 5% | 6% | 6% | 9% | |
| Distance covered (metres) | 4,494 | 4,483 | 8,977 | 109,940 | 10,584 |
| Low activity distance covered (metres) | 2,944 | 3,098 | 6,042 | 65,811 | 6,203 |
| Medium activity distance covered (metres) | 723 | 681 | 1,404 | 17,306 | 1,717 |
| High activity distance covered (metres) | 827 | 705 | 1,532 | 26,824 | 2,665 |
| Top speed (km/h) | 21.65 | 23.20 | 23.20 | 30.13 | 25.15 |
| Sprints | 26 | 20 | 46 | 971 | 116 |

Heat map



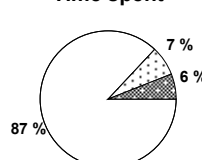
Distance



Activity



Time spent



FIFA does not vouch for the accuracy of technical statistics compiled in association with its competition results system partner.

MON 14 JUN 2010; 18:01 CET / 18:01 local time - Version 1

Page1/0

2010 FIFA World Cup South Africa™

FIFA Partners



FIFA World Cup Sponsors



National Supporters



