

# Player Statistics



Group E

Japan - Cameroon 1:0 (1:0)

Mangaung/Bloemfontein / Free State Stadium / RSA



**Cameroon**  
**2 Benoit ASSOUEKOTTO**  
 Defender

	1st half	2nd half	Total	Team total	Team avg
Goal(s) scored	0	0	0	0	
Attempts on/off target	0	0	0	8	
Assist(s)	0	0	0	0	
Offside(s)	0	0	0	2	
Save(s)	0	0	0	0	
Yellow card(s)	0	0	0	1	
Red card	0	0	0	0	
Foul(s) committed	0	1	1	29	
Delivery/solo runs into the attacking third	3	2	5	39	3.5
Delivery/solo runs into the penalty area	2	0	2	13	1.2
Tackles gaining the ball	0	0	0	0	0.0
Tackles not gaining the ball	0	0	0	0	0.0
Tackles suffered losing the ball	0	0	0	0	0.0
Tackles suffered not losing the ball	0	0	0	0	0.0
Clearances Completed	0	0	0	0	0.0
Clearances Attempted	0	0	0	0	0.0

Passing distribution



Direction of play →

Received passing distribution

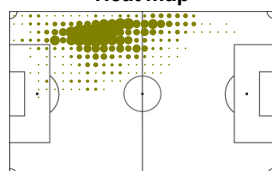


Direction of play →

## Activities

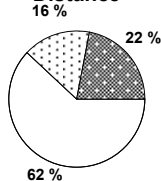
	1st half	2nd half	Total	Team total	Team avg
Total time played (mins)	47'12"	49'06"	96'18"		
Low activity time spent (%)	87%	85%	86%	85%	
Medium activity time spent (%)	6%	8%	7%	7%	
High activity time spent (%)	7%	7%	7%	8%	
Distance covered (metres)	4,644	4,922	9,566	102,958	9,841
Low activity distance covered (metres)	3,034	2,853	5,887	64,436	6,061
Medium activity distance covered (metres)	650	866	1,516	15,819	1,549
High activity distance covered (metres)	959	1,203	2,162	22,700	2,230
Top speed (km/h)	21.69	23.53	23.53	30.13	23.33
Sprints	36	42	78	782	92

Heat map



Direction of play →

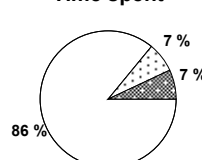
Distance



Activity



Time spent



FIFA does not vouch for the accuracy of technical statistics compiled in association with its competition results system partner.

MON 14 JUN 2010; 18:01 CET / 18:01 local time - Version 1

Page1/0

2010 FIFA World Cup South Africa™

FIFA Partners



FIFA World Cup Sponsors



National Supporters



# Player Statistics



Group E

Japan - Cameroon 1:0 (1:0)

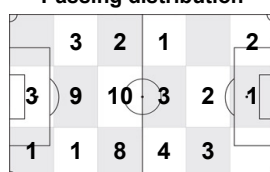
Mangaung/Bloemfontein / Free State Stadium / RSA



**Cameroon**  
**3 Nicolas NKOULOU**  
Defender

	1st half	2nd half	Total	Team total	Team avg
Goal(s) scored	0	0	0	0	
Attempts on/off target	0	0	0	8	
Assist(s)	0	0	0	0	
Offside(s)	0	0	0	2	
Save(s)	0	0	0	0	
Yellow card(s)	0	1	1	1	
Red card	0	0	0	0	
Foul(s) committed	0	1	1	29	
Delivery/solo runs into the attacking third	3	4	7	39	3.5
Delivery/solo runs into the penalty area	0	1	1	13	1.2
Tackles gaining the ball	0	0	0	0	0.0
Tackles not gaining the ball	0	0	0	0	0.0
Tackles suffered losing the ball	0	0	0	0	0.0
Tackles suffered not losing the ball	0	0	0	0	0.0
Clearances Completed	0	0	0	0	0.0
Clearances Attempted	0	0	0	0	0.0

Passing distribution



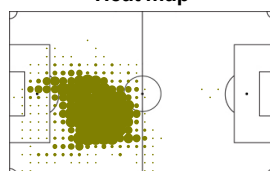
Received passing distribution



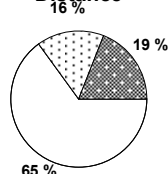
## Activities

	1st half	2nd half	Total	Team total	Team avg
Total time played (mins)	47'12"	49'06"	96'18"		
Low activity time spent (%)	87%	87%	87%	85%	
Medium activity time spent (%)	7%	7%	7%	7%	
High activity time spent (%)	6%	6%	6%	8%	
Distance covered (metres)	4,475	4,596	9,071	102,958	9,841
Low activity distance covered (metres)	2,921	2,957	5,878	64,436	6,061
Medium activity distance covered (metres)	659	768	1,427	15,819	1,549
High activity distance covered (metres)	895	871	1,766	22,700	2,230
Top speed (km/h)	20.75	22.49	22.49	30.13	23.33
Sprints	28	23	51	782	92

Heat map



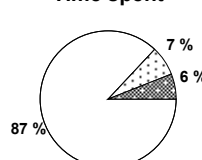
Distance



Activity



Time spent



FIFA does not vouch for the accuracy of technical statistics compiled in association with its competition results system partner.

MON 14 JUN 2010; 18:01 CET / 18:01 local time - Version 1

Page1/0

2010 FIFA World Cup South Africa™

FIFA Partners



FIFA World Cup Sponsors



National Supporters



# Player Statistics



Group E

Japan - Cameroon 1:0 (1:0)

Mangaung/Bloemfontein / Free State Stadium / RSA



**Cameroon**  
**5 Sebastien BASSONG**  
Defender

	1st half	2nd half	Total	Team total	Team avg
Goal(s) scored	0	0	0	0	
Attempts on/off target	0	0	0	8	
Assist(s)	0	0	0	0	
Offside(s)	0	0	0	2	
Save(s)	0	0	0	0	
Yellow card(s)	0	0	0	1	
Red card	0	0	0	0	
Foul(s) committed	1	1	2	29	
Delivery/solo runs into the attacking third	1	0	1	39	3.5
Delivery/solo runs into the penalty area	0	0	0	13	1.2
Tackles gaining the ball	0	0	0	0	0.0
Tackles not gaining the ball	0	0	0	0	0.0
Tackles suffered losing the ball	0	0	0	0	0.0
Tackles suffered not losing the ball	0	0	0	0	0.0
Clearances Completed	0	0	0	0	0.0
Clearances Attempted	0	0	0	0	0.0

Passing distribution



Direction of play →

Received passing distribution

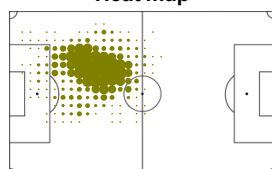


Direction of play →

## Activities

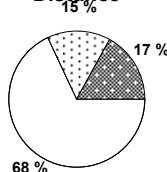
	1st half	2nd half	Total	Team total	Team avg
Total time played (mins)	47'12"	49'06"	96'18"		
Low activity time spent (%)	88%	88%	88%	85%	
Medium activity time spent (%)	6%	7%	7%	7%	
High activity time spent (%)	6%	5%	5%	8%	
Distance covered (metres)	4,140	4,507	8,647	102,958	9,841
Low activity distance covered (metres)	2,881	3,035	5,916	64,436	6,061
Medium activity distance covered (metres)	590	720	1,310	15,819	1,549
High activity distance covered (metres)	670	752	1,422	22,700	2,230
Top speed (km/h)	19.52	20.93	20.93	30.13	23.33
Sprints	23	26	49	782	92

Heat map



Direction of play →

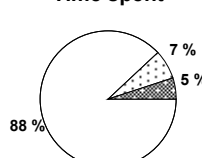
Distance



Activity



Time spent



FIFA does not vouch for the accuracy of technical statistics compiled in association with its competition results system partner.

MON 14 JUN 2010; 18:01 CET / 18:01 local time - Version 1

Page1/0

2010 FIFA World Cup South Africa™

FIFA Partners



FIFA World Cup Sponsors



National Supporters



# Player Statistics



Group E

Japan - Cameroon 1:0 (1:0)

Mangaung/Bloemfontein / Free State Stadium / RSA



**Cameroon**  
**8 GEREMI**  
Defender

	1st half	2nd half	Total	Team total	Team avg
Goal(s) scored	0	0	0	0	
Attempts on/off target	0	0	0	8	
Assist(s)	0	0	0	0	
Offside(s)	0	0	0	2	
Save(s)	0	0	0	0	
Yellow card(s)	0	0	0	1	
Red card	0	0	0	0	
Foul(s) committed	0	0	0	29	
Delivery/solo runs into the attacking third	-	0	0	39	3.5
Delivery/solo runs into the penalty area	-	1	1	13	1.2
Tackles gaining the ball	-	0	0	0	0.0
Tackles not gaining the ball	-	0	0	0	0.0
Tackles suffered losing the ball	-	0	0	0	0.0
Tackles suffered not losing the ball	-	0	0	0	0.0
Clearances Completed	-	0	0	0	0.0
Clearances Attempted	-	0	0	0	0.0

Passing distribution



Direction of play →

Received passing distribution

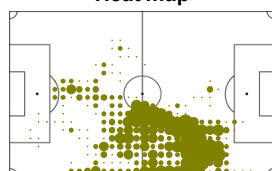


Direction of play →

## Activities

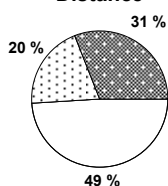
	1st half	2nd half	Total	Team total	Team avg
Total time played (mins)	0'00"	19'24"	19'24"		
Low activity time spent (%)	0%	74%	74%	85%	
Medium activity time spent (%)	0%	13%	13%	7%	
High activity time spent (%)	0%	13%	13%	8%	
Distance covered (metres)	-	2,394	2,394	102,958	9,841
Low activity distance covered (metres)	-	1,170	1,170	64,436	6,061
Medium activity distance covered (metres)	-	470	470	15,819	1,549
High activity distance covered (metres)	-	754	754	22,700	2,230
Top speed (km/h)	-	18.94	18.94	30.13	23.33
Sprints	-	21	21	782	92

Heat map



Direction of play →

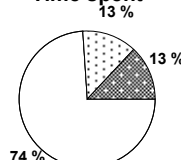
Distance



Activity



Time spent



FIFA does not vouch for the accuracy of technical statistics compiled in association with its competition results system partner.

MON 14 JUN 2010; 18:01 CET / 18:01 local time - Version 1

Page1/0

2010 FIFA World Cup South Africa™

FIFA Partners



FIFA World Cup Sponsors



National Supporters



# Player Statistics



Group E

Japan - Cameroon 1:0 (1:0)

Mangaung/Bloemfontein / Free State Stadium / RSA



**Cameroon**  
**9 Samuel ETOO**  
Forward

	1st half	2nd half	Total	Team total	Team avg
Goal(s) scored	0	0	0	0	
Attempts on/off target	0	0	0	8	
Assist(s)	0	0	0	0	
Offside(s)	0	0	0	2	
Save(s)	0	0	0	0	
Yellow card(s)	0	0	0	1	
Red card	0	0	0	0	
Foul(s) committed	3	1	4	29	
Delivery/solo runs into the attacking third	4	1	5	39	3.5
Delivery/solo runs into the penalty area	1	0	1	13	1.2
Tackles gaining the ball	0	0	0	0	0.0
Tackles not gaining the ball	0	0	0	0	0.0
Tackles suffered losing the ball	0	0	0	0	0.0
Tackles suffered not losing the ball	0	0	0	0	0.0
Clearances Completed	0	0	0	0	0.0
Clearances Attempted	0	0	0	0	0.0

Passing distribution



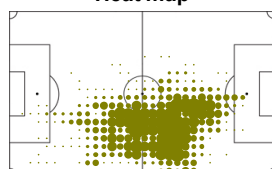
Received passing distribution



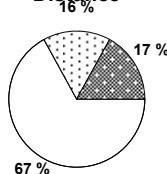
## Activities

	1st half	2nd half	Total	Team total	Team avg
Total time played (mins)	47'12"	49'06"	96'18"		
Low activity time spent (%)	87%	88%	87%	85%	
Medium activity time spent (%)	7%	7%	7%	7%	
High activity time spent (%)	6%	5%	6%	8%	
Distance covered (metres)	4,533	4,479	9,012	102,958	9,841
Low activity distance covered (metres)	2,977	3,077	6,054	64,436	6,061
Medium activity distance covered (metres)	735	670	1,405	15,819	1,549
High activity distance covered (metres)	821	731	1,552	22,700	2,230
Top speed (km/h)	22.71	22.14	22.71	30.13	23.33
Sprints	32	23	55	782	92

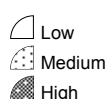
Heat map



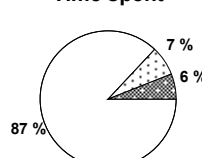
Distance



Activity



Time spent



FIFA does not vouch for the accuracy of technical statistics compiled in association with its competition results system partner.

MON 14 JUN 2010; 18:01 CET / 18:01 local time - Version 1

Page1/0

2010 FIFA World Cup South Africa™

FIFA Partners



FIFA World Cup Sponsors



National Supporters





# Player Statistics



Group E

Japan - Cameroon 1:0 (1:0)

Mangaung/Bloemfontein / Free State Stadium / RSA



**Cameroon**  
**10 Achille EMANA**  
Forward

	1st half	2nd half	Total	Team total	Team avg
Goal(s) scored	0	0	0	0	
Attempts on/off target	0	1	1	8	
Assist(s)	0	0	0	0	
Offside(s)	0	0	0	2	
Save(s)	0	0	0	0	
Yellow card(s)	0	0	0	1	
Red card	0	0	0	0	
Foul(s) committed	0	2	2	29	
Delivery/solo runs into the attacking third	-	4	4	39	3.5
Delivery/solo runs into the penalty area	-	0	0	13	1.2
Tackles gaining the ball	-	0	0	0	0.0
Tackles not gaining the ball	-	0	0	0	0.0
Tackles suffered losing the ball	-	0	0	0	0.0
Tackles suffered not losing the ball	-	0	0	0	0.0
Clearances Completed	-	0	0	0	0.0
Clearances Attempted	-	0	0	0	0.0

Passing distribution



Direction of play →

Received passing distribution

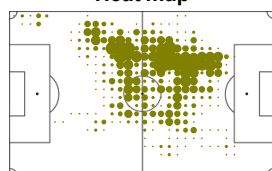


Direction of play →

## Activities

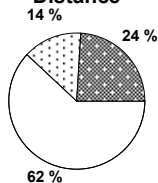
	1st half	2nd half	Total	Team total	Team avg
Total time played (mins)	0'00"	31'16"	31'16"		
Low activity time spent (%)	0%	84%	84%	85%	
Medium activity time spent (%)	0%	8%	8%	7%	
High activity time spent (%)	0%	8%	8%	8%	
Distance covered (metres)	-	3,127	3,127	102,958	9,841
Low activity distance covered (metres)	-	1,937	1,937	64,436	6,061
Medium activity distance covered (metres)	-	436	436	15,819	1,549
High activity distance covered (metres)	-	754	754	22,700	2,230
Top speed (km/h)	-	24.83	24.83	30.13	23.33
Sprints	-	20	20	782	92

Heat map



Direction of play →

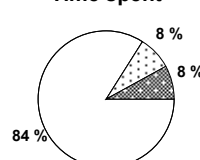
Distance



Activity



Time spent



FIFA does not vouch for the accuracy of technical statistics compiled in association with its competition results system partner.

MON 14 JUN 2010; 18:01 CET / 18:01 local time - Version 1

Page1/0

2010 FIFA World Cup South Africa™

FIFA Partners



FIFA World Cup Sponsors



National Supporters



# Player Statistics



Group E

Japan - Cameroon 1:0 (1:0)

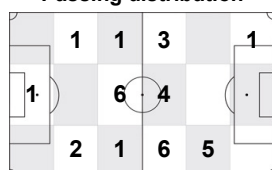
Mangaung/Bloemfontein / Free State Stadium / RSA



**Cameroon**  
**11 Jean MAKOUN**  
Midfield

	1st half	2nd half	Total	Team total	Team avg
Goal(s) scored	0	0	0	0	
Attempts on/off target	0	0	0	8	
Assist(s)	0	0	0	0	
Offside(s)	0	0	0	2	
Save(s)	0	0	0	0	
Yellow card(s)	0	0	0	1	
Red card	0	0	0	0	
Foul(s) committed	0	0	0	29	
Delivery/solo runs into the attacking third	1	2	3	39	3.5
Delivery/solo runs into the penalty area	0	1	1	13	1.2
Tackles gaining the ball	0	0	0	0	0.0
Tackles not gaining the ball	0	0	0	0	0.0
Tackles suffered losing the ball	0	0	0	0	0.0
Tackles suffered not losing the ball	0	0	0	0	0.0
Clearances Completed	0	0	0	0	0.0
Clearances Attempted	0	0	0	0	0.0

Passing distribution



Direction of play →

Received passing distribution

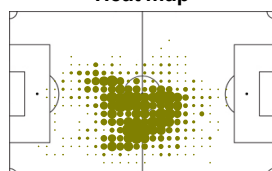


Direction of play →

## Activities

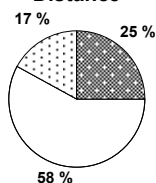
	1st half	2nd half	Total	Team total	Team avg
Total time played (mins)	47'12"	29'42"	76'54"		
Low activity time spent (%)	82%	82%	82%	85%	
Medium activity time spent (%)	8%	10%	9%	7%	
High activity time spent (%)	10%	8%	9%	8%	
Distance covered (metres)	4,884	3,076	7,960	102,958	9,841
Low activity distance covered (metres)	2,854	1,746	4,600	64,436	6,061
Medium activity distance covered (metres)	774	591	1,365	15,819	1,549
High activity distance covered (metres)	1,255	740	1,995	22,700	2,230
Top speed (km/h)	20.83	20.75	20.83	30.13	23.33
Sprints	44	21	65	782	92

Heat map

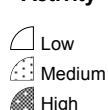


Direction of play →

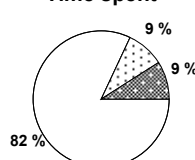
Distance



Activity



Time spent



FIFA does not vouch for the accuracy of technical statistics compiled in association with its competition results system partner.

MON 14 JUN 2010; 18:01 CET / 18:01 local time - Version 1

Page1/0

2010 FIFA World Cup South Africa™

FIFA Partners



FIFA World Cup Sponsors



National Supporters



# Player Statistics



Group E

Japan - Cameroon 1:0 (1:0)

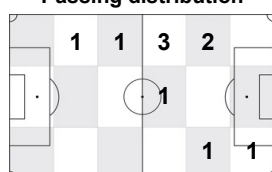
Mangaung/Bloemfontein / Free State Stadium / RSA



**Cameroon**  
**13 Eric CHOUPO MOTING**  
 Forward

	1st half	2nd half	Total	Team total	Team avg
Goal(s) scored	0	0	0	0	
Attempts on/off target	1	2	3	8	
Assist(s)	0	0	0	0	
Offside(s)	0	0	0	2	
Save(s)	0	0	0	0	
Yellow card(s)	0	0	0	1	
Red card	0	0	0	0	
Foul(s) committed	1	2	3	29	
Delivery/solo runs into the attacking third	0	1	1	39	3.5
Delivery/solo runs into the penalty area	0	1	1	13	1.2
Tackles gaining the ball	0	0	0	0	0.0
Tackles not gaining the ball	0	0	0	0	0.0
Tackles suffered losing the ball	0	0	0	0	0.0
Tackles suffered not losing the ball	0	0	0	0	0.0
Clearances Completed	0	0	0	0	0.0
Clearances Attempted	0	0	0	0	0.0

Passing distribution



Direction of play →

Received passing distribution

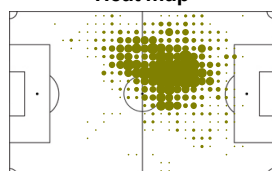


Direction of play →

## Activities

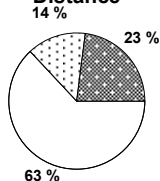
	1st half	2nd half	Total	Team total	Team avg
Total time played (mins)	47'12"	29'38"	76'50"		
Low activity time spent (%)	83%	87%	85%	85%	
Medium activity time spent (%)	8%	6%	7%	7%	
High activity time spent (%)	9%	7%	8%	8%	
Distance covered (metres)	5,182	2,895	8,077	102,958	9,841
Low activity distance covered (metres)	3,164	1,932	5,096	64,436	6,061
Medium activity distance covered (metres)	737	394	1,131	15,819	1,549
High activity distance covered (metres)	1,281	569	1,850	22,700	2,230
Top speed (km/h)	24.07	30.13	30.13	30.13	23.33
Sprints	57	22	79	782	92

Heat map



Direction of play →

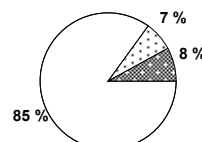
Distance



Activity



Time spent



FIFA does not vouch for the accuracy of technical statistics compiled in association with its competition results system partner.

MON 14 JUN 2010; 18:01 CET / 18:01 local time - Version 1

Page1/0

2010 FIFA World Cup South Africa™

FIFA Partners



FIFA World Cup Sponsors



National Supporters





# Player Statistics



Group E

Japan - Cameroon 1:0 (1:0)

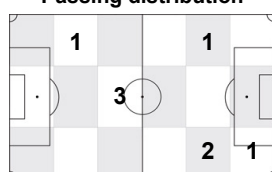
Mangaung/Bloemfontein / Free State Stadium / RSA



**Cameroon**  
**15 Pierre WEBO**  
Forward

	1st half	2nd half	Total	Team total	Team avg
Goal(s) scored	0	0	0	0	
Attempts on/off target	0	2	2	8	
Assist(s)	0	0	0	0	
Offside(s)	1	1	2	2	
Save(s)	0	0	0	0	
Yellow card(s)	0	0	0	1	
Red card	0	0	0	0	
Foul(s) committed	1	1	2	29	
Delivery/solo runs into the attacking third	0	0	0	39	3.5
Delivery/solo runs into the penalty area	0	0	0	13	1.2
Tackles gaining the ball	0	0	0	0	0.0
Tackles not gaining the ball	0	0	0	0	0.0
Tackles suffered losing the ball	0	0	0	0	0.0
Tackles suffered not losing the ball	0	0	0	0	0.0
Clearances Completed	0	0	0	0	0.0
Clearances Attempted	0	0	0	0	0.0

Passing distribution



Direction of play →

Received passing distribution

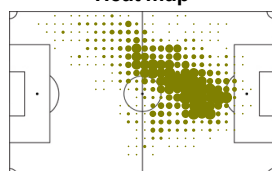


Direction of play →

## Activities

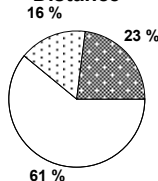
	1st half	2nd half	Total	Team total	Team avg
Total time played (mins)	47'12"	49'06"	96'18"		
Low activity time spent (%)	82%	84%	83%	85%	
Medium activity time spent (%)	9%	7%	8%	7%	
High activity time spent (%)	9%	9%	9%	8%	
Distance covered (metres)	5,082	4,868	9,950	102,958	9,841
Low activity distance covered (metres)	3,025	3,002	6,027	64,436	6,061
Medium activity distance covered (metres)	828	718	1,546	15,819	1,549
High activity distance covered (metres)	1,229	1,148	2,377	22,700	2,230
Top speed (km/h)	25.94	25.94	25.94	30.13	23.33
Sprints	52	45	97	782	92

Heat map



Direction of play →

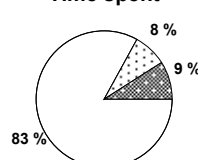
Distance



Activity



Time spent



FIFA does not vouch for the accuracy of technical statistics compiled in association with its competition results system partner.

MON 14 JUN 2010; 18:01 CET / 18:01 local time - Version 1

Page1/0

2010 FIFA World Cup South Africa™

FIFA Partners



FIFA World Cup Sponsors



National Supporters



# Player Statistics



Group E

Japan - Cameroon 1:0 (1:0)

Mangaung/Bloemfontein / Free State Stadium / RSA



**Cameroon**  
**16 Hamidou SOULEYMANOU**  
 Goalkeeper

	1st half	2nd half	Total	Team total	Team avg
Goal(s) scored	0	0	0	0	
Attempts on/off target	0	0	0	8	
Assist(s)	0	0	0	0	
Offside(s)	0	0	0	2	
Save(s)	0	0	0	0	
Yellow card(s)	0	0	0	1	
Red card	0	0	0	0	
Foul(s) committed	0	0	0	29	
Delivery/solo runs into the attacking third	1	3	4	39	3.5
Delivery/solo runs into the penalty area	1	0	1	13	1.2
Tackles gaining the ball	0	0	0	0	0.0
Tackles not gaining the ball	0	0	0	0	0.0
Tackles suffered losing the ball	0	0	0	0	0.0
Tackles suffered not losing the ball	0	0	0	0	0.0
Clearances Completed	0	0	0	0	0.0
Clearances Attempted	0	0	0	0	0.0

Passing distribution



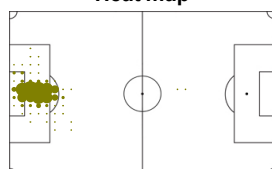
Received passing distribution



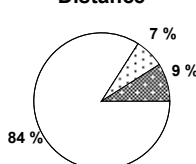
## Activities

	1st half	2nd half	Total	Team total	Team avg
Total time played (mins)	47'12"	49'06"	96'18"		
Low activity time spent (%)	97%	97%	97%	85%	
Medium activity time spent (%)	2%	2%	2%	7%	
High activity time spent (%)	1%	1%	1%	8%	
Distance covered (metres)	2,324	2,255	4,579	102,958	9,841
Low activity distance covered (metres)	1,972	1,866	3,838	64,436	6,061
Medium activity distance covered (metres)	136	193	329	15,819	1,549
High activity distance covered (metres)	215	196	411	22,700	2,230
Top speed (km/h)	19.38	18.75	19.38	30.13	23.33
Sprints	8	8	16	782	92

Heat map



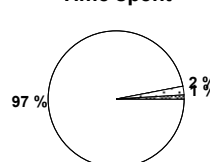
Distance



Activity



Time spent



FIFA does not vouch for the accuracy of technical statistics compiled in association with its competition results system partner.

MON 14 JUN 2010; 18:01 CET / 18:01 local time - Version 1

Page1/0

2010 FIFA World Cup South Africa™

FIFA Partners



FIFA World Cup Sponsors



National Supporters



# Player Statistics



Group E

Japan - Cameroon 1:0 (1:0)

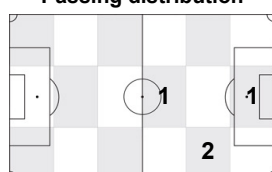
Mangaung/Bloemfontein / Free State Stadium / RSA



**Cameroon**  
**17 Mohamadou IDRISOU**  
Forward

	1st half	2nd half	Total	Team total	Team avg
Goal(s) scored	0	0	0	0	
Attempts on/off target	0	0	0	8	
Assist(s)	0	0	0	0	
Offside(s)	0	0	0	2	
Save(s)	0	0	0	0	
Yellow card(s)	0	0	0	1	
Red card	0	0	0	0	
Foul(s) committed	0	2	2	29	
Delivery/solo runs into the attacking third	-	0	0	39	3.5
Delivery/solo runs into the penalty area	-	1	1	13	1.2
Tackles gaining the ball	-	0	0	0	0.0
Tackles not gaining the ball	-	0	0	0	0.0
Tackles suffered losing the ball	-	0	0	0	0.0
Tackles suffered not losing the ball	-	0	0	0	0.0
Clearances Completed	-	0	0	0	0.0
Clearances Attempted	-	0	0	0	0.0

Passing distribution



Direction of play →

Received passing distribution

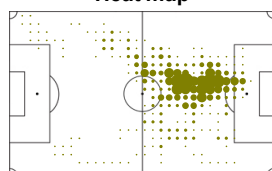


Direction of play →

## Activities

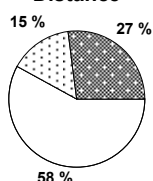
	1st half	2nd half	Total	Team total	Team avg
Total time played (mins)	0'00"	19'28"	19'28"		
Low activity time spent (%)	0%	82%	82%	85%	
Medium activity time spent (%)	0%	9%	9%	7%	
High activity time spent (%)	0%	9%	9%	8%	
Distance covered (metres)	-	2,254	2,254	102,958	9,841
Low activity distance covered (metres)	-	1,313	1,313	64,436	6,061
Medium activity distance covered (metres)	-	342	342	15,819	1,549
High activity distance covered (metres)	-	599	599	22,700	2,230
Top speed (km/h)	-	23.16	23.16	30.13	23.33
Sprints	-	17	17	782	92

Heat map



Direction of play →

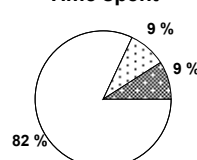
Distance



Activity



Time spent



FIFA does not vouch for the accuracy of technical statistics compiled in association with its competition results system partner.

MON 14 JUN 2010; 18:01 CET / 18:01 local time - Version 1

Page1/0

2010 FIFA World Cup South Africa™

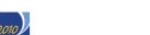
FIFA Partners



FIFA World Cup Sponsors



National Supporters



# Player Statistics



Group E

Japan - Cameroon 1:0 (1:0)

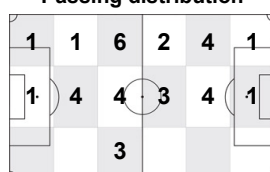
Mangaung/Bloemfontein / Free State Stadium / RSA



**Cameroon**  
**18 Eyong ENOH**  
Midfield

	1st half	2nd half	Total	Team total	Team avg
Goal(s) scored	0	0	0	0	
Attempts on/off target	1	0	1	8	
Assist(s)	0	0	0	0	
Offside(s)	0	0	0	2	
Save(s)	0	0	0	0	
Yellow card(s)	0	0	0	1	
Red card	0	0	0	0	
Foul(s) committed	3	1	4	29	
Delivery/solo runs into the attacking third	1	3	4	39	3.5
Delivery/solo runs into the penalty area	0	2	2	13	1.2
Tackles gaining the ball	0	0	0	0	0.0
Tackles not gaining the ball	0	0	0	0	0.0
Tackles suffered losing the ball	0	0	0	0	0.0
Tackles suffered not losing the ball	0	0	0	0	0.0
Clearances Completed	0	0	0	0	0.0
Clearances Attempted	0	0	0	0	0.0

Passing distribution



Direction of play →

Received passing distribution

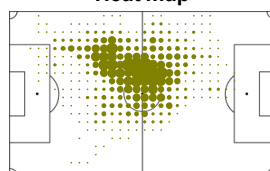


Direction of play →

## Activities

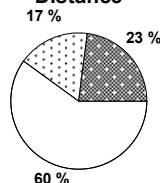
	1st half	2nd half	Total	Team total	Team avg
Total time played (mins)	47'12"	49'06"	96'18"		
Low activity time spent (%)	82%	81%	81%	85%	
Medium activity time spent (%)	9%	9%	9%	7%	
High activity time spent (%)	9%	10%	10%	8%	
Distance covered (metres)	5,390	5,449	10,839	102,958	9,841
Low activity distance covered (metres)	3,253	3,216	6,469	64,436	6,061
Medium activity distance covered (metres)	920	925	1,845	15,819	1,549
High activity distance covered (metres)	1,217	1,308	2,525	22,700	2,230
Top speed (km/h)	19.95	24.46	24.46	30.13	23.33
Sprints	49	33	82	782	92

Heat map



Direction of play →

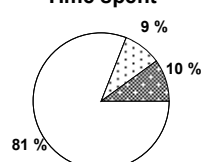
Distance



Activity



Time spent



FIFA does not vouch for the accuracy of technical statistics compiled in association with its competition results system partner.

MON 14 JUN 2010; 18:01 CET / 18:01 local time - Version 1

Page1/0

2010 FIFA World Cup South Africa™

FIFA Partners



FIFA World Cup Sponsors



National Supporters



# Player Statistics



Group E

Japan - Cameroon 1:0 (1:0)

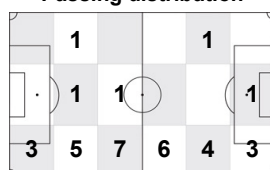
Mangaung/Bloemfontein / Free State Stadium / RSA



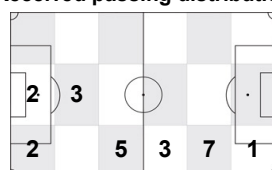
**Cameroon**  
**19 Stéphane MBIA**  
Defender

	1st half	2nd half	Total	Team total	Team avg
Goal(s) scored	0	0	0	0	
Attempts on/off target	0	1	1	8	
Assist(s)	0	0	0	0	
Offside(s)	0	0	0	2	
Save(s)	0	0	0	0	
Yellow card(s)	0	0	0	1	
Red card	0	0	0	0	
Foul(s) committed	1	4	5	29	
Delivery/solo runs into the attacking third	1	3	4	39	3.5
Delivery/solo runs into the penalty area	0	2	2	13	1.2
Tackles gaining the ball	0	0	0	0	0.0
Tackles not gaining the ball	0	0	0	0	0.0
Tackles suffered losing the ball	0	0	0	0	0.0
Tackles suffered not losing the ball	0	0	0	0	0.0
Clearances Completed	0	0	0	0	0.0
Clearances Attempted	0	0	0	0	0.0

Passing distribution



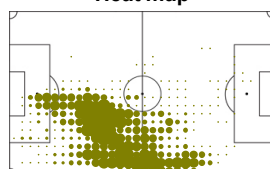
Received passing distribution



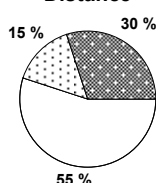
## Activities

	1st half	2nd half	Total	Team total	Team avg
Total time played (mins)	47'12"	49'06"	96'18"		
Low activity time spent (%)	84%	80%	82%	85%	
Medium activity time spent (%)	7%	9%	8%	7%	
High activity time spent (%)	9%	11%	10%	8%	
Distance covered (metres)	5,001	5,576	10,577	102,958	9,841
Low activity distance covered (metres)	2,858	2,940	5,798	64,436	6,061
Medium activity distance covered (metres)	680	898	1,578	15,819	1,549
High activity distance covered (metres)	1,463	1,738	3,201	22,700	2,230
Top speed (km/h)	24.42	23.67	24.42	30.13	23.33
Sprints	58	59	117	782	92

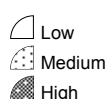
Heat map



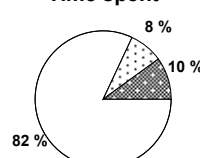
Distance



Activity



Time spent



FIFA does not vouch for the accuracy of technical statistics compiled in association with its competition results system partner.

MON 14 JUN 2010; 18:01 CET / 18:01 local time - Version 1

Page1/0

2010 FIFA World Cup South Africa™

FIFA Partners



FIFA World Cup Sponsors



National Supporters





# Player Statistics



Group E

Japan - Cameroon 1:0 (1:0)

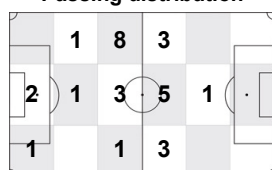
Mangaung/Bloemfontein / Free State Stadium / RSA



**Cameroon**  
**21 Joel MATIP**  
Midfield

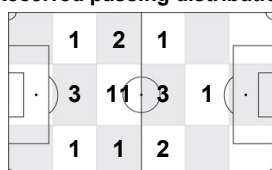
	1st half	2nd half	Total	Team total	Team avg
Goal(s) scored	0	0	0	0	
Attempts on/off target	0	0	0	8	
Assist(s)	0	0	0	0	
Offside(s)	0	0	0	2	
Save(s)	0	0	0	0	
Yellow card(s)	0	0	0	1	
Red card	0	0	0	0	
Foul(s) committed	2	1	3	29	
Delivery/solo runs into the attacking third	1	0	1	39	3.5
Delivery/solo runs into the penalty area	0	0	0	13	1.2
Tackles gaining the ball	0	0	0	0	0.0
Tackles not gaining the ball	0	0	0	0	0.0
Tackles suffered losing the ball	0	0	0	0	0.0
Tackles suffered not losing the ball	0	0	0	0	0.0
Clearances Completed	0	0	0	0	0.0
Clearances Attempted	0	0	0	0	0.0

Passing distribution



Direction of play →

Received passing distribution

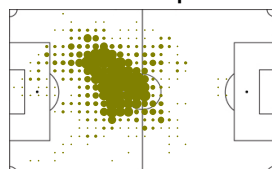


Direction of play →

## Activities

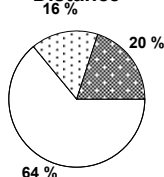
	1st half	2nd half	Total	Team total	Team avg
Total time played (mins)	47'12"	17'50"	65'02"		
Low activity time spent (%)	85%	82%	84%	85%	
Medium activity time spent (%)	8%	10%	9%	7%	
High activity time spent (%)	7%	8%	7%	8%	
Distance covered (metres)	4,885	2,020	6,905	102,958	9,841
Low activity distance covered (metres)	3,212	1,241	4,453	64,436	6,061
Medium activity distance covered (metres)	776	343	1,119	15,819	1,549
High activity distance covered (metres)	896	436	1,332	22,700	2,230
Top speed (km/h)	20.25	20.93	20.93	30.13	23.33
Sprints	21	14	35	782	92

Heat map



Direction of play →

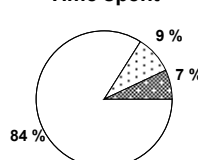
Distance



Activity



Time spent



FIFA does not vouch for the accuracy of technical statistics compiled in association with its competition results system partner.

MON 14 JUN 2010; 18:01 CET / 18:01 local time - Version 1

Page1/0

2010 FIFA World Cup South Africa™

FIFA Partners



FIFA World Cup Sponsors



National Supporters



