

Team Tracking Statistics

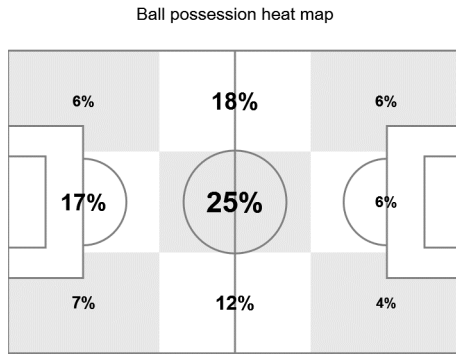
Group E

Serbia - Switzerland 1 : 2 (1 : 0)

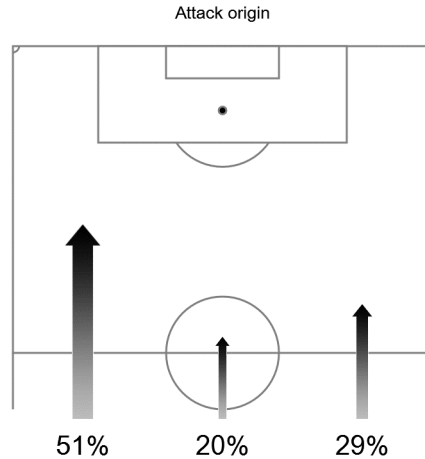
26 22 JUN 2018 20:00 Kaliningrad / Kaliningrad Stadium / RUS



Switzerland



Attacking direction →



| # | Name | Time | Distance covered (metres) | | | Time spent | | | SP | T.S. | Activity time spent | | | | |
|----|--------------|--------|---------------------------|--------------|-------------|------------|-------|------|----|-------|---------------------|--------|--------|--------|--------|
| | | | Total | In Poss | Not in Poss | O.H. | A.3rd | P.A. | | | Zone 1 | Zone 2 | Zone 3 | Zone 4 | Zone 5 |
| 1 | SOMMER | 97'59" | 5,044 | 2,244 | 1,495 | | | | 2 | 27.00 | 93% | 6% | 1% | | |
| 2 | LICHTSTEINER | 97'59" | 10,892 | 4,653 | 3,794 | 36% | 15% | 1% | 37 | 25.92 | 67% | 25% | 6% | 2% | |
| 5 | AKANJI | 97'59" | 9,639 | 4,246 | 3,275 | 21% | 6% | 3% | 18 | 30.60 | 70% | 25% | 4% | 1% | |
| 9 | SEFEROVIC | 47'07" | 5,418 | 2,778 | 1,441 | 79% | 46% | 13% | 20 | 27.00 | 65% | 28% | 4% | 2% | 1% |
| 10 | XHAKA | 97'59" | 11,477 | 5,182 | 4,005 | 38% | 13% | | 25 | 27.18 | 63% | 28% | 8% | 1% | |
| 11 | BEHRAMI | 97'59" | 10,844 | 4,407 | 4,300 | 30% | 6% | 1% | 33 | 29.48 | 66% | 26% | 6% | 2% | |
| 13 | R. RODRIGUEZ | 97'59" | 10,654 | 4,620 | 3,661 | 34% | 17% | | 36 | 29.02 | 67% | 26% | 4% | 2% | 1% |
| 14 | ZUBER | 95'12" | 11,619 | 5,270 | 3,931 | 58% | 32% | 8% | 46 | 28.58 | 61% | 30% | 6% | 2% | 1% |
| 15 | DZEMAILI | 74'21" | 8,743 | 4,080 | 3,028 | 60% | 30% | 8% | 43 | 25.20 | 66% | 25% | 5% | 3% | 1% |
| 22 | SCHAER | 97'59" | 9,367 | 3,959 | 3,419 | 18% | 6% | 2% | 18 | 27.22 | 74% | 22% | 3% | 1% | |
| 23 | SHAQIRI | 97'59" | 9,986 | 4,720 | 3,146 | 61% | 28% | 2% | 42 | 29.02 | 71% | 22% | 4% | 2% | 1% |
| 7 | EMBOLO | 23'38" | 2,605 | 1,093 | 787 | 66% | 42% | 18% | 15 | 29.92 | 69% | 22% | 4% | 3% | 2% |
| 18 | GAVRANOVIC | 50'52" | 5,810 | 2,380 | 2,155 | 81% | 46% | 16% | 28 | 29.02 | 66% | 24% | 6% | 3% | 1% |
| 19 | DRMIC | 2'47" | 392 | 149 | 148 | 73% | 44% | 36% | 3 | 24.12 | 45% | 40% | 6% | 7% | 2% |

In Poss: Team in possession O.H.: In opposite half Zone 1: 0-7 km/h **Bold values: top performing in the match**
 Not In Poss: Opposite team in possession A.3rd: In attacking third Zone 2: 7-15 km/h
 P.A.: In penalty area Zone 3: 15-20 km/h
 Sprints Zone 4: 20-25 km/h
 T.S.: Top speed Zone 5: > 25 km/h

FIFA does not vouch for the accuracy of technical statistics compiled in association with its competition results system partner.

