

Team Tracking Statistics

Group E

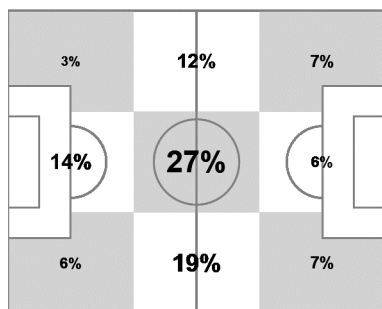
Switzerland - Ecuador 2 : 1 (0 : 1)

9 15 JUN 2014 13:00 Brasilia / Estadio Nacional / BRA



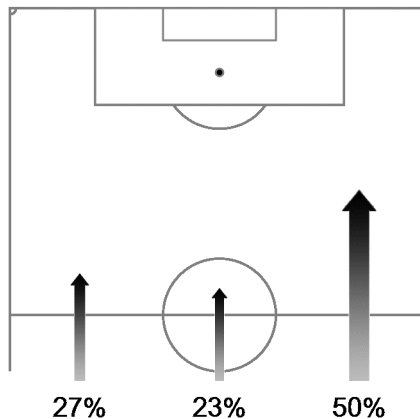
Switzerland

Ball possession heat map



Attacking direction →

Attack origin



| # | Name | Time | Distance covered (metres) | | | Time spent | | | Sprints | Top speed | Activity time spent | | |
|----|--------------|--------|---------------------------|--------------|-------------|------------|----------|-----------|---------|-----------|---------------------|--------|------|
| | | | Total | In Poss | Not in Poss | Opp. Half | Att. 3rd | Pen. Area | | | Low | Medium | High |
| 1 | BENAGLIO | 95'24" | 5,291 | 1,981 | 1,625 | | | | 1 | 22.64 | 96% | 2% | 2% |
| 2 | LICHTSTEINER | 95'24" | 11,447 | 4,581 | 3,738 | 39% | 20% | 2% | 53 | 29.05 | 77% | 10% | 13% |
| 5 | VON BERGEN | 95'24" | 9,062 | 3,486 | 3,174 | 19% | 1% | | 30 | 30.53 | 87% | 7% | 6% |
| 8 | INLER | 95'24" | 11,537 | 4,603 | 3,660 | 48% | 18% | 1% | 21 | 26.50 | 78% | 12% | 10% |
| 10 | XHAKA | 95'24" | 12,107 | 4,960 | 3,838 | 65% | 31% | 7% | 45 | 27.94 | 74% | 12% | 14% |
| 11 | BEHRAMI | 95'24" | 11,512 | 4,312 | 4,016 | 43% | 12% | 4% | 49 | 30.53 | 78% | 10% | 12% |
| 13 | RODRIGUEZ | 95'24" | 10,000 | 4,132 | 3,302 | 38% | 15% | | 46 | 30.31 | 83% | 7% | 10% |
| 14 | STOCKER | 46'33" | 5,660 | 2,366 | 1,723 | 73% | 45% | 19% | 18 | 22.64 | 78% | 10% | 12% |
| 19 | DRMIC | 76'30" | 8,700 | 3,398 | 2,641 | 88% | 54% | 16% | 33 | 29.77 | 80% | 9% | 11% |
| 20 | DJOUROU | 95'24" | 9,425 | 3,434 | 3,184 | 19% | 11% | 6% | 25 | 27.79 | 85% | 7% | 8% |
| 23 | SHAQIRI | 95'24" | 10,781 | 4,327 | 3,241 | 70% | 35% | 4% | 34 | 27.36 | 82% | 9% | 9% |
| 9 | SEFEROVIC | 18'54" | 2,358 | 1,077 | 610 | 77% | 53% | 11% | 13 | 23.58 | 77% | 10% | 13% |
| 18 | MEHMEDI | 48'51" | 5,748 | 2,377 | 1,760 | 66% | 31% | 5% | 29 | 30.31 | 79% | 9% | 12% |

In Poss: Team in possession Opp. Half: In opposing half Bold values: top performing in the match
 Not In Poss: Opposite team in possession Att. 3rd: In attaching third
 Pen. Area: In penalty area

FIFA does not vouch for the accuracy of technical statistics compiled in association with its competition results system partner.

