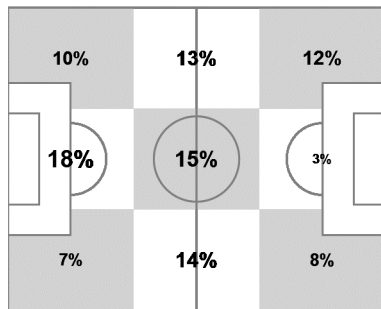




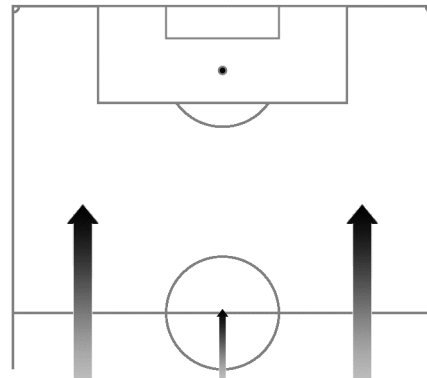
Ecuador

Ball possession heat map



Attacking direction →

Attack origin



Total is not 100% due to rounding

#	Name	Time	Distance covered (metres)			Time spent			Sprints	Top speed	Activity time spent		
			Total	In Poss	Not in Poss	Opp. Half	Att. 3rd	Pen. Area			Low	Medium	High
22	DOMINGUEZ	95'24"	3,180	848	1,137				1	21.02	99%		1%
2	GUAGUA	95'24"	8,556	2,369	3,568	8%	4%	3%	17	27.79	89%	6%	5%
3	ERAZO	95'24"	8,578	2,377	3,563	10%	7%	4%	16	24.80	89%	6%	5%
4	PAREDES	95'24"	9,796	3,145	4,081	25%	5%		43	29.41	84%	7%	9%
6	NOBOA	95'24"	10,542	3,097	4,456	33%	11%	2%	23	25.16	81%	10%	9%
7	MONTERO	77'35"	7,652	2,555	2,783	54%	26%	3%	29	27.58	87%	5%	8%
10	W. AYОВI	95'24"	9,134	2,724	3,912	23%	10%		25	30.35	86%	6%	8%
11	CAICEDO	71'13"	6,679	2,229	2,437	70%	34%	12%	20	<b>31.07</b>	88%	6%	6%
13	E. VALENCIA	95'24"	9,534	2,905	3,717	67%	33%	7%	45	30.17	85%	7%	8%
16	A. VALENCIA	95'24"	9,958	3,002	4,215	49%	22%	2%	29	29.77	85%	7%	8%
23	GRUEZO	95'24"	10,490	3,023	<b>4,560</b>	29%	8%	1%	34	25.96	82%	10%	8%
9	ROJAS	17'49"	2,099	566	983	48%	28%	5%	13	25.96	77%	9%	14%
15	ARROYO	24'11"	2,718	751	1,044	55%	22%	1%	11	24.73	80%	8%	12%

In Poss: Team in possession

Opp. Half: In opposing half

Bold values: top performing in the match

Not In Poss: Opposite team in possession

Att. 3rd: In attacking third

Pen. Area: In penalty area

FIFA does not vouch for the accuracy of technical statistics compiled in association with its competition results system partner.

