

Team Tracking Statistics

Final

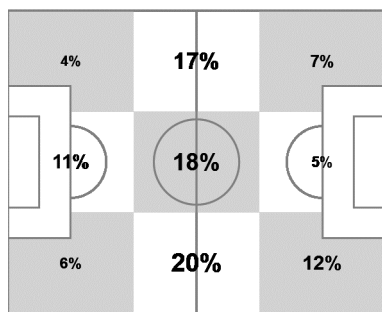
Germany - Argentina 1 : 0 AET

64 13 JUL 2014 16:00 Rio De Janeiro / Estadio do Maracanã / BRA

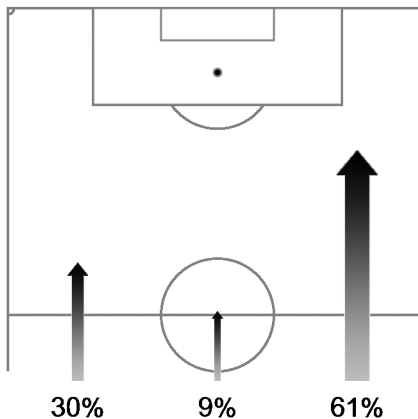


Germany

Ball possession heat map



Attack origin



#	Name	Time	Distance covered (metres)			Time spent			Sprints	Top speed	Activity time spent		
			Total	In Poss	Not in Poss	Opp. Half	Att. 3rd	Pen. Area			Low	Medium	High
1	NEUER	129'09"	6,985	2,424	2,269	1%			8	30.85	96%	2%	2%
4	HOEWEDES	129'09"	14,115	5,628	4,849	43%	15%	3%	40	27.04	83%	9%	8%
5	HUMMELS	129'09"	12,973	5,043	4,542	21%	6%	2%	35	31.61	86%	7%	7%
7	SCHWEINSTEIGER	129'09"	15,338	6,527	4,906	48%	14%	1%	55	26.14	77%	11%	12%
8	OEZIL	124'58"	14,131	6,153	4,523	67%	35%	4%	58	28.51	80%	8%	12%
11	KLOSE	89'48"	8,942	3,509	2,864	80%	57%	14%	38	26.86	86%	6%	8%
13	MUELLER	129'09"	15,180	6,262	4,729	72%	45%	10%	62	27.22	80%	9%	11%
16	LAHM	129'09"	13,738	5,997	4,621	47%	17%		50	26.28	80%	10%	10%
18	KROOS	129'09"	14,320	6,027	4,807	53%	20%	1%	32	27.97	81%	10%	9%
20	BOATENG	129'09"	13,670	5,481	4,636	28%	2%		53	28.69	83%	9%	8%
23	KRAMER	30'39"	4,107	1,974	1,316	72%	45%	5%	23	28.69	71%	12%	17%
9	SCHUERRLE	98'29"	11,179	4,805	3,572	65%	35%	5%	65	30.17	80%	8%	12%
17	MERTESACKER	4'10"	362	60	105				2	24.48	87%	5%	8%
19	GOETZE	39'20"	5,447	2,627	1,781	71%	41%	5%	29	27.97	68%	13%	19%

In Poss: Team in possession Opp. Half: In opposing half Bold values: top performing in the match
 Not In Poss: Opposite team in possession Att. 3rd: In attacking third
 Pen. Area: In penalty area

FIFA does not vouch for the accuracy of technical statistics compiled in association with its competition results system partner.

