

# Team Tracking Statistics

Quarter-final

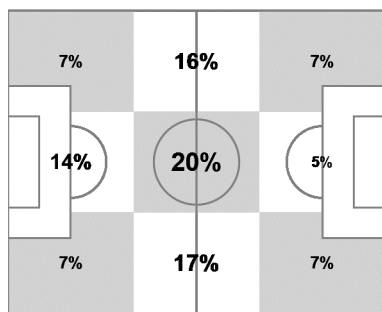
## Argentina - Belgium 1 : 0 ( 1 : 0 )

# 60 05 JUL 2014 13:00 Brasilia / Estadio Nacional / BRA



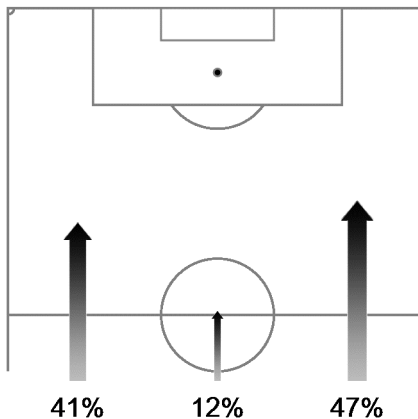
### Argentina

Ball possession heat map



Attacking direction →

Attack origin



#	Name	Time	Distance covered (metres)			Time spent			Sprints	Top speed	Activity time spent		
			Total	In Poss	Not in Poss	Opp. Half	Att. 3rd	Pen. Area			Low	Medium	High
1	ROMERO	97'05"	3,347	978	1,064				1	18.90	99%		1%
2	GARAY	97'05"	9,256	2,931	3,220	11%	7%	3%	23	31.39	87%	7%	6%
4	ZABALETA	97'05"	10,021	3,288	3,534	26%	9%	1%	37	29.59	84%	8%	8%
6	BIGLIA	97'05"	11,353	<b>4,034</b>	3,903	32%	10%		41	27.36	77%	11%	12%
7	DI MARIA	32'42"	3,425	1,273	1,311	52%	19%	1%	10	31.07	82%	8%	10%
9	HIGUAIN	82'47"	8,847	3,029	2,581	72%	38%	9%	39	28.87	86%	6%	8%
10	MESSI	97'05"	8,422	2,948	2,459	64%	24%	2%	35	28.51	90%	4%	6%
14	MASCHERANO	97'05"	10,504	3,496	3,681	26%	7%		21	26.06	82%	10%	8%
15	DEMICHIELIS	97'05"	8,709	2,697	3,086	12%	8%	3%	22	26.06	89%	6%	5%
22	LAVEZZI	72'16"	8,360	3,100	2,690	52%	26%	6%	32	27.58	80%	9%	11%
23	BASANTA	97'05"	10,576	3,535	3,474	26%	13%	4%	40	<b>32.72</b>	83%	8%	9%
5	GAGO	14'19"	1,653	462	617	22%	2%	6%	9	23.87	77%	9%	14%
8	PEREZ	64'23"	7,302	2,502	2,489	42%	21%	1%	41	29.23	80%	8%	12%
18	PALACIO	24'49"	3,081	834	932	51%	20%	3%	15	31.39	79%	9%	12%

In Poss: Team in possession      Opp. Half: In opposing half      Bold values: top performing in the match  
 Not In Poss: Opposite team in possession      Att. 3rd: In attacking third  
 Pen. Area: In penalty area

FIFA does not vouch for the accuracy of technical statistics compiled in association with its competition results system partner.

