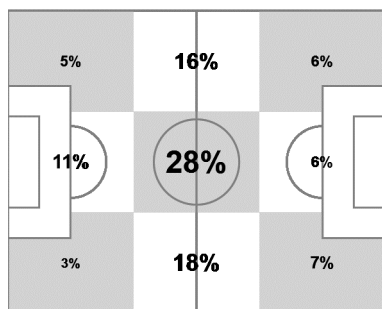




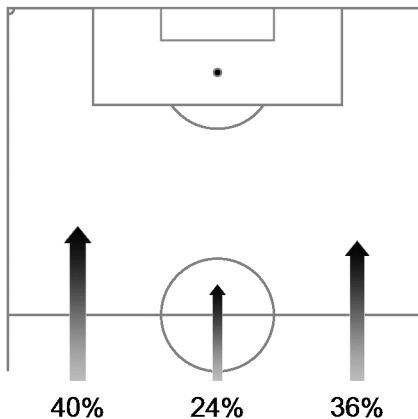
Germany

Ball possession heat map



Attacking direction →

Attack origin



#	Name	Time	Distance covered (metres)			Time spent			Sprints	Top speed	Activity time spent		
			Total	In Poss	Not in Poss	Opp. Half	Att. 3rd	Pen. Area			Low	Medium	High
1	NEUER	128'21"	5,517	2,036	1,381	1%			7	22.39	96%	2%	2%
4	HOEWEDES	128'21"	12,485	5,231	3,153	36%	15%	4%	32	28.69	80%	10%	10%
7	SCHWEINSTEIGER	114'47"	11,564	5,172	2,558	49%	23%	4%	47	27.79	74%	12%	14%
8	OEZIL	128'21"	11,255	4,943	2,843	57%	30%	4%	52	30.13	82%	7%	11%
13	MUELLER	128'21"	12,464	5,113	2,945	67%	42%	9%	56	28.69	81%	8%	11%
16	LAHM	128'21"	12,422	<b>5,324</b>	3,158	39%	14%	1%	28	25.63	77%	11%	12%
17	MERTESACKER	128'21"	10,786	4,268	2,753	19%	5%	3%	25	27.97	84%	8%	8%
18	KROOS	128'21"	11,999	5,253	3,140	46%	17%		22	29.02	82%	9%	9%
19	GOETZE	46'04"	6,139	3,250	1,555	73%	41%	4%	30	25.24	69%	14%	17%
20	BOATENG	128'21"	11,108	4,491	2,869	20%	3%		32	<b>31.07</b>	85%	8%	7%
21	MUSTAFI	70'17"	6,607	3,137	1,528	34%	14%	2%	13	25.52	76%	12%	12%
6	KHEDIRA	58'04"	6,810	2,503	1,942	47%	23%	3%	23	28.15	77%	10%	13%
9	SCHUERLE	82'17"	6,290	2,249	1,579	47%	29%	4%	34	28.33	81%	7%	12%
23	KRAMER	13'34"	1,968	755	713	57%	32%	1%	15	25.96	68%	13%	19%

In Poss: Team in possession

Opp. Half: In opposing half

Bold values: top performing in the match

Not In Poss: Opposite team in possession

Att. 3rd: In attacking third

Pen. Area: In penalty area

FIFA does not vouch for the accuracy of technical statistics compiled in association with its competition results system partner.

