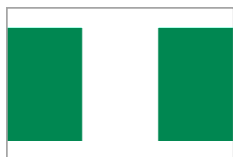




Round of 16

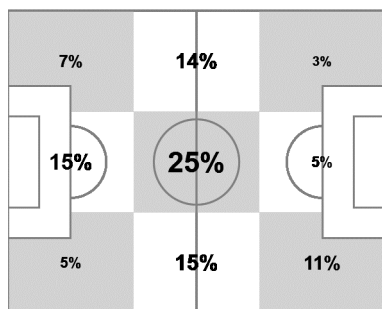
France - Nigeria 2 : 0 ( 0 : 0 )

# 53 30 JUN 2014 13:00 Brasilia / Estadio Nacional / BRA



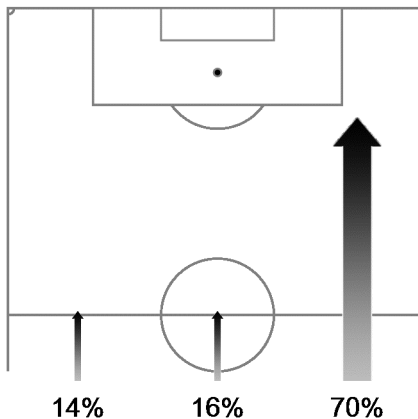
Nigeria

Ball possession heat map



Attacking direction →

Attack origin



#	Name	Time	Distance covered (metres)			Time spent			Sprints	Top speed	Activity time spent		
			Total	In Poss	Not in Poss	Opp. Half	Att. 3rd	Pen. Area			Low	Medium	High
1	ENYEAMA	97'26"	2,943	847	1,043				1	13.75	99%	1%	
2	YOBO	97'26"	8,190	2,641	2,696	19%	8%	4%	20	25.24	90%	5%	5%
5	AMBROSE	97'26"	9,279	3,358	3,041	29%	15%	5%	48	29.20	85%	6%	9%
7	MUSA	97'26"	8,745	3,217	2,956	64%	31%	7%	34	26.68	86%	7%	7%
8	ODEMWINGIE	97'26"	9,954	3,540	2,973	54%	25%	6%	41	31.61	85%	7%	8%
9	EMENIKE	97'26"	9,493	3,573	2,710	70%	39%	13%	34	30.13	86%	7%	7%
10	MIKEL	97'26"	9,619	3,351	3,200	37%	15%	4%	20	28.48	85%	8%	7%
11	MOSES	90'59"	10,000	<b>3,882</b>	2,933	57%	30%	11%	<b>50</b>	26.46	82%	7%	11%
13	OSHANIWA	97'26"	9,171	3,212	3,215	30%	10%		35	27.58	86%	6%	8%
17	ONAZI	61'11"	6,086	2,139	2,125	36%	13%		27	27.58	84%	8%	8%
22	OMERUO	97'26"	8,494	2,741	3,019	13%	1%	1%	18	29.38	88%	6%	6%
4	GABRIEL	36'15"	3,876	1,293	1,354	28%	6%	1%	13	23.15	80%	10%	10%
19	NWOFOR	6'27"	551	154	144	39%	16%	9%	2	21.89	86%	6%	8%

In Poss: Team in possession

Opp. Half: In opposing half

Bold values: top performing in the match

Not In Poss: Opposite team in possession

Att. 3rd: In attacking third

Pen. Area: In penalty area

FIFA does not vouch for the accuracy of technical statistics compiled in association with its competition results system partner.

