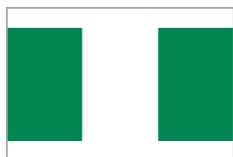


Team Tracking Statistics

Group F

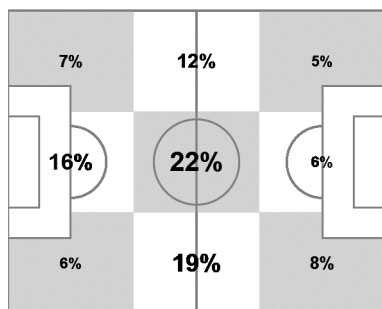
Nigeria - Argentina 2 : 3 (1 : 2)

43 25 JUN 2014 13:00 Porto Alegre / Estadio Beira-Rio / BRA



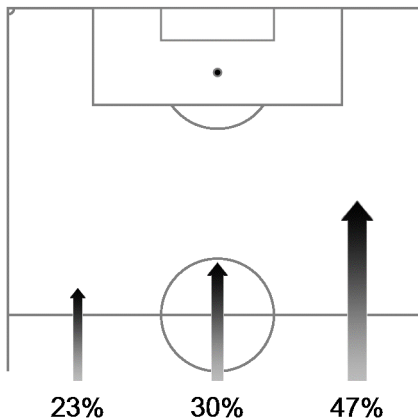
Nigeria

Ball possession heat map



Attacking direction →

Attack origin



#	Name	Time	Distance covered (metres)			Time spent			Sprints	Top speed	Activity time spent		
			Total	In Poss	Not in Poss	Opp. Half	Att. 3rd	Pen. Area			Low	Medium	High
1	ENYEAMA	96'11"	3,553	1,018	1,343				3	20.34	97%	2%	1%
2	YOBO	96'11"	8,486	2,499	3,519	14%	7%	3%	22	28.33	89%	5%	6%
5	AMBROSE	96'11"	9,525	2,873	4,068	28%	11%	3%	42	29.95	83%	8%	9%
7	MUSA	96'11"	8,996	2,968	3,804	59%	25%	4%	40	30.92	87%	5%	8%
8	ODEMWINGIE	81'50"	9,002	2,766	3,738	44%	20%	3%	36	29.05	80%	10%	10%
9	EMENIKE	96'11"	9,981	3,350	3,808	61%	28%	6%	37	30.85	84%	7%	9%
10	MIKEL	96'11"	10,176	3,380	4,247	36%	12%	2%	24	26.68	81%	9%	10%
13	OSHANIWA	96'11"	9,682	3,335	3,975	24%	5%		46	28.15	84%	7%	9%
17	ONAZI	96'11"	10,142	3,231	4,491	28%	7%	1%	44	29.23	82%	8%	10%
18	BABATUNDE	67'14"	8,037	2,563	3,519	41%	15%	1%	35	25.02	76%	11%	13%
22	OMERUO	96'11"	9,416	2,762	4,155	8%	1%		34	30.71	86%	7%	7%
19	NWOFOR	14'22"	1,528	698	452	86%	51%	17%	6	23.76	82%	9%	9%
20	UCHEBO	28'58"	3,824	1,505	1,402	62%	31%	5%	25	26.14	73%	11%	16%

In Poss: Team in possession Opp. Half: In opposing half Bold values: top performing in the match
 Not In Poss: Opposite team in possession Att. 3rd: In attacking third
 Pen. Area: In penalty area

FIFA does not vouch for the accuracy of technical statistics compiled in association with its competition results system partner.

