

Team Tracking Statistics

Final

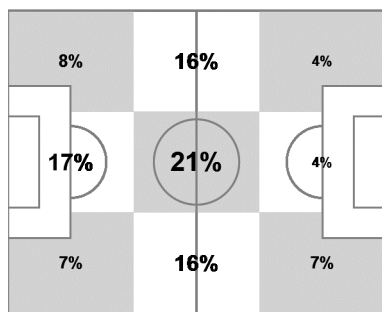
Germany - Argentina 1 : 0 AET

64 13 JUL 2014 16:00 Rio De Janeiro / Estadio do Maracanã / BRA



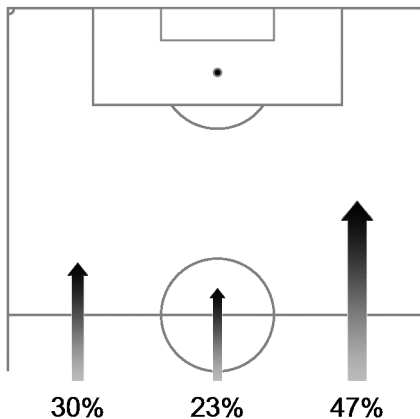
Argentina

Ball possession heat map



Attacking direction →

Attack origin



#	Name	Time	Distance covered (metres)			Time spent			Sprints	Top speed	Activity time spent		
			Total	In Poss	Not in Poss	Opp. Half	Att. 3rd	Pen. Area			Low	Medium	High
1	ROMERO	129'09"	4,233	1,294	1,626				6	28.84	98%	1%	1%
2	GARAY	129'09"	12,601	3,545	5,681	9%	4%	2%	37	27.54	87%	6%	7%
4	ZABALETA	129'09"	13,495	4,271	6,071	19%	6%	1%	50	28.15	83%	8%	9%
6	BIGLIA	129'09"	14,681	4,403	6,901	35%	9%		50	25.70	78%	10%	12%
8	PEREZ	87'59"	9,775	2,964	4,362	34%	12%	1%	40	31.25	80%	9%	11%
9	HIGUAIN	79'23"	8,972	2,917	3,419	63%	28%	6%	41	30.67	83%	7%	10%
10	MESSI	129'09"	10,721	3,732	4,063	55%	23%	2%	38	30.35	92%	3%	5%
14	MASCHERANO	129'09"	14,037	3,909	6,754	24%	6%	1%	36	28.69	81%	10%	9%
15	DEMICHELIS	129'09"	11,164	3,136	4,888	13%	4%	1%	33	28.87	89%	6%	5%
16	ROJO	129'09"	14,089	4,538	5,891	25%	9%	2%	50	28.30	82%	8%	10%
22	LAVEZZI	47'03"	5,734	1,832	2,495	38%	16%	3%	27	30.53	80%	8%	12%
5	GAGO	41'10"	4,571	1,383	2,093	36%	12%	2%	19	23.94	80%	9%	11%
18	PALACIO	49'45"	6,017	2,011	2,607	57%	31%	6%	30	31.07	79%	9%	12%
20	AGUERO	82'06"	8,307	2,692	3,295	66%	37%	7%	30	31.07	87%	6%	7%

In Poss: Team in possession Opp. Half: In opposing half Bold values: top performing in the match
 Not In Poss: Opposite team in possession Att. 3rd: In attacking third
 Pen. Area: In penalty area

FIFA does not vouch for the accuracy of technical statistics compiled in association with its competition results system partner.

