

# Team Tracking Statistics



Group G

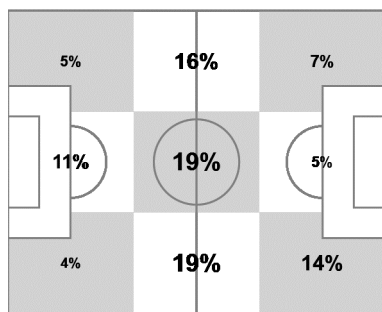
## Ghana - USA 1 : 2 ( 0 : 1 )

# 14 16 JUN 2014 19:00 Natal / Estadio Das Dunas / BRA



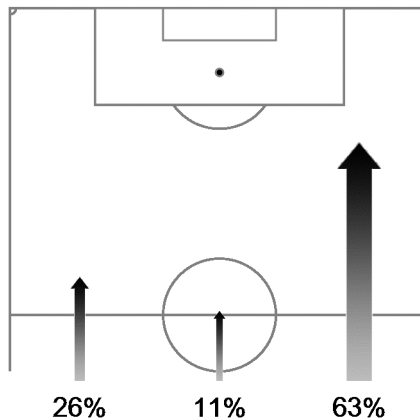
Ghana

Ball possession heat map



Attacking direction →

Attack origin



#	Name	Time	Distance covered (metres)			Time spent			Sprints	Top speed	Activity time spent		
			Total	In Poss	Not in Poss	Opp. Half	Att. 3rd	Pen. Area			Low	Medium	High
12	KWARASEY	100'01"	4,427	1,453	1,223				2	16.88	99%	1%	
3	GYAN	100'01"	9,169	3,575	2,249	88%	56%	17%	32	27.97	90%	5%	5%
4	OPARE	100'01"	9,723	3,783	2,923	37%	10%		40	28.51	85%	7%	8%
7	ATSU	82'07"	9,481	3,772	2,480	72%	42%	3%	50	28.51	80%	9%	11%
10	A. AYEWE	100'01"	10,885	4,408	2,809	72%	41%	15%	47	29.02	82%	9%	9%
11	MUNTARI	100'01"	11,354	<b>4,464</b>	3,273	56%	20%	1%	36	26.32	77%	11%	12%
13	J. AYEWE	63'05"	7,356	2,713	1,776	82%	48%	12%	41	28.51	80%	9%	11%
17	RABIU	75'41"	9,428	3,452	2,794	51%	10%	1%	36	28.12	75%	11%	14%
19	MENSAH	100'01"	9,966	3,577	2,840	27%	7%	2%	31	27.58	84%	8%	8%
20	ASAMOAH	100'01"	10,083	3,859	2,720	44%	18%		31	29.05	84%	8%	8%
21	BOYE	100'01"	9,942	3,631	2,851	24%	7%	3%	35	30.17	85%	8%	7%
5	ESSIEN	24'20"	2,659	1,136	810	48%	18%	3%	9	26.32	80%	9%	11%
9	BOATENG	36'56"	3,944	1,571	1,064	76%	49%	11%	17	30.89	84%	7%	9%
14	ADOMAH	17'54"	2,157	851	643	54%	30%	4%	11	26.50	77%	9%	14%

In Poss: Team in possession      Opp. Half: In opposing half      Bold values: top performing in the match  
 Not In Poss: Opposite team in possession      Att. 3rd: In attacking third  
 Pen. Area: In penalty area

FIFA does not vouch for the accuracy of technical statistics compiled in association with its competition results system partner.

