

# Player Statistics



Group H

**Chile - Spain 1:2 (0:2)**

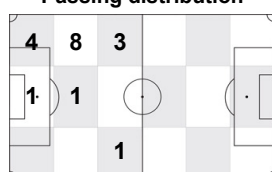
Tshwane/Pretoria / Loftus Versfeld Stadium / RSA



**Chile**  
**1 Claudio BRAVO**  
Goalkeeper

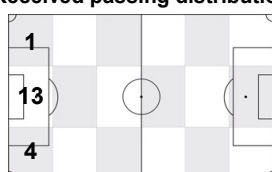
	1st half	2nd half	Total	Team total	Team avg
Goal(s) scored	0	0	0	1	
Attempts on/off target	0	0	0	6	
Assist(s)	0	0	0	1	
Offside(s)	0	0	0	3	
Save(s)	0	1	1	1	
Yellow card(s)	0	0	0	4	
Red card	0	0	0	1	
Foul(s) committed	0	0	0	21	
Delivery/solo runs into the attacking third	0	0	0	29	2.9
Delivery/solo runs into the penalty area	0	0	0	4	0.4
Tackles gaining the ball	0	0	0	11	1.1
Tackles not gaining the ball	1	0	1	5	0.5
Tackles suffered losing the ball	0	0	0	6	0.6
Tackles suffered not losing the ball	0	0	0	5	0.5
Clearances Completed	0	0	0	1	0.1
Clearances Attempted	0	1	1	6	0.6

Passing distribution



Direction of play →

Received passing distribution

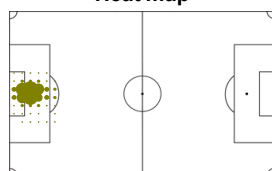


Direction of play →

## Activities

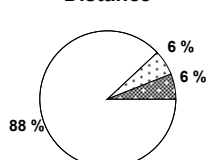
	1st half	2nd half	Total	Team total	Team avg
Total time played (mins)	47'53"	47'05"	94'58"		
Low activity time spent (%)	97%	97%	97%	82%	
Medium activity time spent (%)	2%	2%	2%	9%	
High activity time spent (%)	1%	1%	1%	9%	
Distance covered (metres)	2,410	2,382	4,792	100,296	9,649
Low activity distance covered (metres)	2,163	2,068	4,231	57,294	5,512
Medium activity distance covered (metres)	119	155	274	16,402	1,578
High activity distance covered (metres)	128	160	288	26,598	2,559
Top speed (km/h)	17.13	14.56	17.13	25.96	21.50
Sprints	5	3	8	1077	123

Heat map



Direction of play →

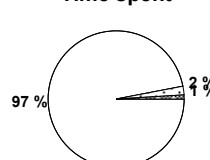
Distance



Activity



Time spent



FIFA does not vouch for the accuracy of technical statistics compiled in association with its competition results system partner.

FRI 25 JUN 2010; 22:36 CET / 22:36 local time - Version 1

Page1/0

2010 FIFA World Cup South Africa™

FIFA Partners



FIFA World Cup Sponsors



National Supporters



# Player Statistics



Group H

**Chile - Spain 1:2 (0:2)**

Tshwane/Pretoria / Loftus Versfeld Stadium / RSA



**Chile**  
**3 Waldo PONCE**  
 Defender

	1st half	2nd half	Total	Team total	Team avg
Goal(s) scored	0	0	0	1	
Attempts on/off target	0	0	0	6	
Assist(s)	0	0	0	1	
Offside(s)	0	0	0	3	
Save(s)	0	0	0	1	
Yellow card(s)	1	0	1	4	
Red card	0	0	0	1	
Foul(s) committed	1	0	1	21	
Delivery/solo runs into the attacking third	0	0	0	29	2.9
Delivery/solo runs into the penalty area	0	0	0	4	0.4
Tackles gaining the ball	0	2	2	11	1.1
Tackles not gaining the ball	0	0	0	5	0.5
Tackles suffered losing the ball	0	0	0	6	0.6
Tackles suffered not losing the ball	0	0	0	5	0.5
Clearances Completed	0	1	1	1	0.1
Clearances Attempted	0	1	1	6	0.6

Passing distribution



Direction of play →

Received passing distribution

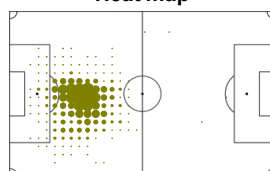


Direction of play →

## Activities

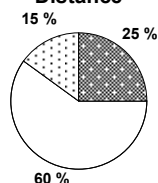
	1st half	2nd half	Total	Team total	Team avg
Total time played (mins)	47'53"	47'05"	94'58"		
Low activity time spent (%)	83%	82%	83%	82%	
Medium activity time spent (%)	8%	8%	8%	9%	
High activity time spent (%)	9%	10%	9%	9%	
Distance covered (metres)	4,618	4,901	9,519	100,296	9,649
Low activity distance covered (metres)	2,690	3,049	5,739	57,294	5,512
Medium activity distance covered (metres)	784	685	1,469	16,402	1,578
High activity distance covered (metres)	1,144	1,167	2,311	26,598	2,559
Top speed (km/h)	21.30	23.65	23.65	25.96	21.50
Sprints	35	43	78	1077	123

Heat map

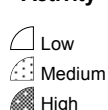


Direction of play →

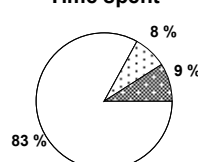
Distance



Activity



Time spent



FIFA does not vouch for the accuracy of technical statistics compiled in association with its competition results system partner.

FRI 25 JUN 2010; 22:36 CET / 22:36 local time - Version 1

Page1/0

2010 FIFA World Cup South Africa™

FIFA Partners



FIFA World Cup Sponsors



National Supporters



# Player Statistics



Group H

**Chile - Spain 1:2 (0:2)**

Tshwane/Pretoria / Loftus Versfeld Stadium / RSA



**Chile**  
**4 Mauricio ISLA**  
Defender

	1st half	2nd half	Total	Team total	Team avg
Goal(s) scored	0	0	0	1	
Attempts on/off target	0	0	0	6	
Assist(s)	0	0	0	1	
Offside(s)	0	0	0	3	
Save(s)	0	0	0	1	
Yellow card(s)	0	0	0	4	
Red card	0	0	0	1	
Foul(s) committed	2	0	2	21	
Delivery/solo runs into the attacking third	1	4	5	29	2.9
Delivery/solo runs into the penalty area	0	0	0	4	0.4
Tackles gaining the ball	0	1	1	11	1.1
Tackles not gaining the ball	0	0	0	5	0.5
Tackles suffered losing the ball	0	0	0	6	0.6
Tackles suffered not losing the ball	0	0	0	5	0.5
Clearances Completed	0	0	0	1	0.1
Clearances Attempted	1	0	1	6	0.6

Passing distribution



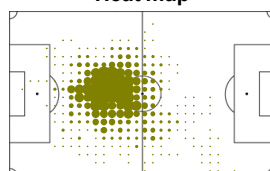
Received passing distribution



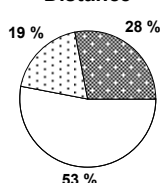
## Activities

	1st half	2nd half	Total	Team total	Team avg
Total time played (mins)	47'53"	47'05"	94'58"		
Low activity time spent (%)	80%	77%	78%	82%	
Medium activity time spent (%)	10%	12%	11%	9%	
High activity time spent (%)	10%	11%	11%	9%	
Distance covered (metres)	4,997	5,753	10,750	100,296	9,649
Low activity distance covered (metres)	2,558	3,161	5,719	57,294	5,512
Medium activity distance covered (metres)	975	1,107	2,082	16,402	1,578
High activity distance covered (metres)	1,464	1,485	2,949	26,598	2,559
Top speed (km/h)	22.54	23.61	23.61	25.96	21.50
Sprints	63	51	114	1077	123

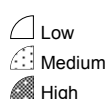
Heat map



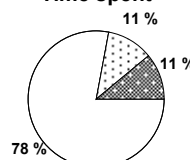
Distance



Activity



Time spent



FIFA does not vouch for the accuracy of technical statistics compiled in association with its competition results system partner.

FRI 25 JUN 2010; 22:36 CET / 22:36 local time - Version 1

Page1/0

2010 FIFA World Cup South Africa™

FIFA Partners



FIFA World Cup Sponsors



National Supporters



# Player Statistics



Group H

**Chile - Spain 1:2 (0:2)**

Tshwane/Pretoria / Loftus Versfeld Stadium / RSA



**Chile**  
**7 Alexis SANCHEZ**  
Forward

	1st half	2nd half	Total	Team total	Team avg
Goal(s) scored	0	0	0	1	
Attempts on/off target	1	0	1	6	
Assist(s)	0	1	1	1	
Offside(s)	0	0	0	3	
Save(s)	0	0	0	1	
Yellow card(s)	0	0	0	4	
Red card	0	0	0	1	
Foul(s) committed	0	1	1	21	
Delivery/solo runs into the attacking third	1	1	2	29	2.9
Delivery/solo runs into the penalty area	1	1	2	4	0.4
Tackles gaining the ball	1	1	2	11	1.1
Tackles not gaining the ball	0	0	0	5	0.5
Tackles suffered losing the ball	1	0	1	6	0.6
Tackles suffered not losing the ball	0	0	0	5	0.5
Clearances Completed	0	0	0	1	0.1
Clearances Attempted	0	0	0	6	0.6

Passing distribution



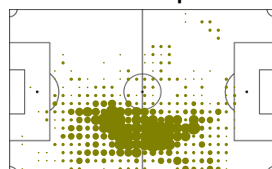
Received passing distribution



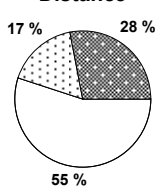
## Activities

	1st half	2nd half	Total	Team total	Team avg
Total time played (mins)	47'53"	19'43"	67'36"		
Low activity time spent (%)	80%	80%	80%	82%	
Medium activity time spent (%)	10%	9%	10%	9%	
High activity time spent (%)	10%	11%	10%	9%	
Distance covered (metres)	5,016	2,117	7,133	100,296	9,649
Low activity distance covered (metres)	2,821	1,117	3,938	57,294	5,512
Medium activity distance covered (metres)	854	364	1,218	16,402	1,578
High activity distance covered (metres)	1,341	635	1,976	26,598	2,559
Top speed (km/h)	21.69	21.39	21.69	25.96	21.50
Sprints	66	29	95	1077	123

Heat map



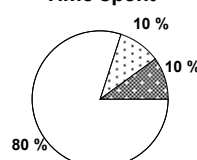
Distance



Activity



Time spent



FIFA does not vouch for the accuracy of technical statistics compiled in association with its competition results system partner.

FRI 25 JUN 2010; 22:36 CET / 22:36 local time - Version 1

2010 FIFA World Cup South Africa™

FIFA Partners



FIFA World Cup Sponsors



National Supporters



# Player Statistics



Group H

**Chile - Spain 1:2 (0:2)**

Tshwane/Pretoria / Loftus Versfeld Stadium / RSA



**Chile**  
**8 Arturo VIDAL**  
Midfield

	1st half	2nd half	Total	Team total	Team avg
Goal(s) scored	0	0	0	1	
Attempts on/off target	0	0	0	6	
Assist(s)	0	0	0	1	
Offside(s)	0	0	0	3	
Save(s)	0	0	0	1	
Yellow card(s)	0	0	0	4	
Red card	0	0	0	1	
Foul(s) committed	5	3	8	21	
Delivery/solo runs into the attacking third	2	4	6	29	2.9
Delivery/solo runs into the penalty area	0	0	0	4	0.4
Tackles gaining the ball	0	0	0	11	1.1
Tackles not gaining the ball	0	1	1	5	0.5
Tackles suffered losing the ball	0	0	0	6	0.6
Tackles suffered not losing the ball	0	0	0	5	0.5
Clearances Completed	0	0	0	1	0.1
Clearances Attempted	0	1	1	6	0.6

Passing distribution



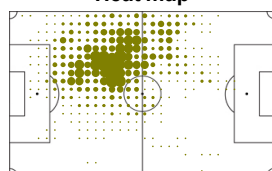
Received passing distribution



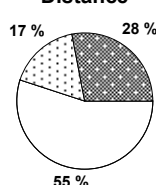
## Activities

	1st half	2nd half	Total	Team total	Team avg
Total time played (mins)	47'53"	47'05"	94'58"		
Low activity time spent (%)	82%	78%	80%	82%	
Medium activity time spent (%)	8%	11%	9%	9%	
High activity time spent (%)	10%	11%	11%	9%	
Distance covered (metres)	4,757	5,512	10,269	100,296	9,649
Low activity distance covered (metres)	2,556	3,073	5,629	57,294	5,512
Medium activity distance covered (metres)	822	931	1,753	16,402	1,578
High activity distance covered (metres)	1,378	1,508	2,886	26,598	2,559
Top speed (km/h)	19.54	19.78	19.78	25.96	21.50
Sprints	58	63	121	1077	123

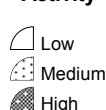
Heat map



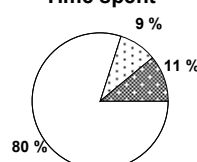
Distance



Activity



Time spent



FIFA does not vouch for the accuracy of technical statistics compiled in association with its competition results system partner.

FRI 25 JUN 2010; 22:36 CET / 22:36 local time - Version 1

Page1/0

2010 FIFA World Cup South Africa™

FIFA Partners



FIFA World Cup Sponsors



National Supporters



# Player Statistics



Group H

**Chile - Spain 1:2 (0:2)**

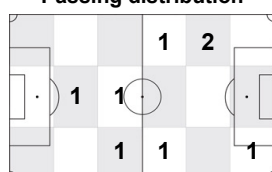
Tshwane/Pretoria / Loftus Versfeld Stadium / RSA



**Chile**  
**10 Jorge VALDIVIA**  
Midfield

	1st half	2nd half	Total	Team total	Team avg
Goal(s) scored	0	0	0	1	
Attempts on/off target	0	0	0	6	
Assist(s)	0	0	0	1	
Offside(s)	0	0	0	3	
Save(s)	0	0	0	1	
Yellow card(s)	0	0	0	4	
Red card	0	0	0	1	
Foul(s) committed	2	0	2	21	
Delivery/solo runs into the attacking third	0	0	0	29	2.9
Delivery/solo runs into the penalty area	1	0	1	4	0.4
Tackles gaining the ball	0	0	0	11	1.1
Tackles not gaining the ball	1	0	1	5	0.5
Tackles suffered losing the ball	1	0	1	6	0.6
Tackles suffered not losing the ball	1	0	1	5	0.5
Clearances Completed	0	0	0	1	0.1
Clearances Attempted	0	0	0	6	0.6

Passing distribution



Direction of play →

Received passing distribution

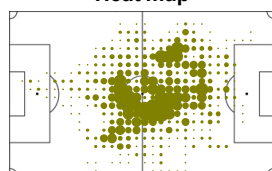


Direction of play →

## Activities

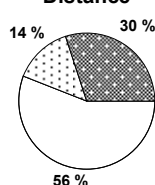
	1st half	2nd half	Total	Team total	Team avg
Total time played (mins)	47'53"	0'00"	47'53"		
Low activity time spent (%)	84%	0%	84%	82%	
Medium activity time spent (%)	6%	0%	6%	9%	
High activity time spent (%)	10%	0%	10%	9%	
Distance covered (metres)	4,749	-	4,749	100,296	9,649
Low activity distance covered (metres)	2,677	-	2,677	57,294	5,512
Medium activity distance covered (metres)	676	-	676	16,402	1,578
High activity distance covered (metres)	1,396	-	1,396	26,598	2,559
Top speed (km/h)	25.37	-	25.37	25.96	21.50
Sprints	69	-	69	1077	123

Heat map



Direction of play →

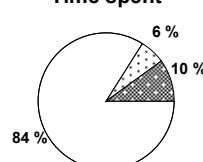
Distance



Activity



Time spent



FIFA does not vouch for the accuracy of technical statistics compiled in association with its competition results system partner.

FRI 25 JUN 2010; 22:36 CET / 22:36 local time - Version 1

Page1/0

2010 FIFA World Cup South Africa™

FIFA Partners



FIFA World Cup Sponsors



National Supporters



# Player Statistics



Group H

Chile - Spain 1:2 (0:2)

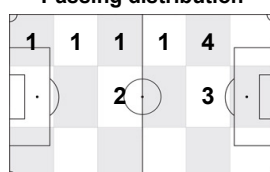
Tshwane/Pretoria / Loftus Versfeld Stadium / RSA



**Chile**  
**11 Mark GONZALEZ**  
 Forward

	1st half	2nd half	Total	Team total	Team avg
Goal(s) scored	0	0	0	1	
Attempts on/off target	1	0	1	6	
Assist(s)	0	0	0	1	
Offside(s)	0	0	0	3	
Save(s)	0	0	0	1	
Yellow card(s)	0	0	0	4	
Red card	0	0	0	1	
Foul(s) committed	0	0	0	21	
Delivery/solo runs into the attacking third	2	0	2	29	2.9
Delivery/solo runs into the penalty area	0	0	0	4	0.4
Tackles gaining the ball	0	0	0	11	1.1
Tackles not gaining the ball	0	0	0	5	0.5
Tackles suffered losing the ball	0	0	0	6	0.6
Tackles suffered not losing the ball	0	0	0	5	0.5
Clearances Completed	0	0	0	1	0.1
Clearances Attempted	0	0	0	6	0.6

Passing distribution



Direction of play →

Received passing distribution

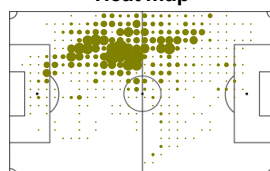


Direction of play →

## Activities

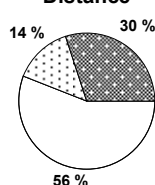
	1st half	2nd half	Total	Team total	Team avg
Total time played (mins)	47'53"	0'00"	47'53"		
Low activity time spent (%)	85%	0%	85%	82%	
Medium activity time spent (%)	7%	0%	7%	9%	
High activity time spent (%)	8%	0%	8%	9%	
Distance covered (metres)	4,446	-	4,446	100,296	9,649
Low activity distance covered (metres)	2,508	-	2,508	57,294	5,512
Medium activity distance covered (metres)	631	-	631	16,402	1,578
High activity distance covered (metres)	1,307	-	1,307	26,598	2,559
Top speed (km/h)	23.83	-	23.83	25.96	21.50
Sprints	47	-	47	1077	123

Heat map

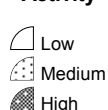


Direction of play →

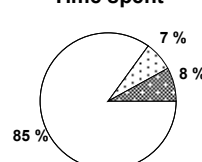
Distance



Activity



Time spent



FIFA does not vouch for the accuracy of technical statistics compiled in association with its competition results system partner.

FRI 25 JUN 2010; 22:36 CET / 22:36 local time - Version 1

Page1/0

2010 FIFA World Cup South Africa™

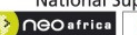
FIFA Partners



FIFA World Cup Sponsors



National Supporters



# Player Statistics



Group H

**Chile - Spain 1:2 (0:2)**

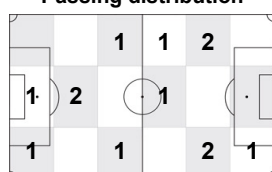
Tshwane/Pretoria / Loftus Versfeld Stadium / RSA



**Chile**  
**13 Marco ESTRADA**  
Midfield

	1st half	2nd half	Total	Team total	Team avg
Goal(s) scored	0	0	0	1	
Attempts on/off target	1	0	1	6	
Assist(s)	0	0	0	1	
Offside(s)	0	0	0	3	
Save(s)	0	0	0	1	
Yellow card(s)	2	0	2	4	
Red card	1	0	1	1	
Foul(s) committed	3	0	3	21	
Delivery/solo runs into the attacking third	2	0	2	29	2.9
Delivery/solo runs into the penalty area	0	0	0	4	0.4
Tackles gaining the ball	0	0	0	11	1.1
Tackles not gaining the ball	1	0	1	5	0.5
Tackles suffered losing the ball	0	0	0	6	0.6
Tackles suffered not losing the ball	2	0	2	5	0.5
Clearances Completed	0	0	0	1	0.1
Clearances Attempted	0	0	0	6	0.6

Passing distribution



Direction of play →

Received passing distribution

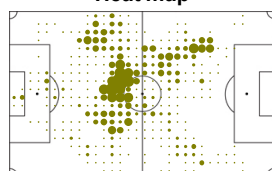


Direction of play →

## Activities

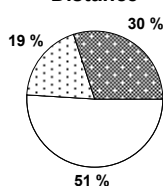
	1st half	2nd half	Total	Team total	Team avg
Total time played (mins)	36'40"	0'00"	36'40"		
Low activity time spent (%)	80%	0%	80%	82%	
Medium activity time spent (%)	10%	0%	10%	9%	
High activity time spent (%)	10%	0%	10%	9%	
Distance covered (metres)	3,842	-	3,842	100,296	9,649
Low activity distance covered (metres)	1,971	-	1,971	57,294	5,512
Medium activity distance covered (metres)	732	-	732	16,402	1,578
High activity distance covered (metres)	1,139	-	1,139	26,598	2,559
Top speed (km/h)	21.69	-	21.69	25.96	21.50
Sprints	43	-	43	1077	123

Heat map



Direction of play →

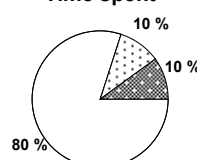
Distance



Activity



Time spent



FIFA does not vouch for the accuracy of technical statistics compiled in association with its competition results system partner.

FRI 25 JUN 2010; 22:36 CET / 22:36 local time - Version 1

Page1/0

2010 FIFA World Cup South Africa™

FIFA Partners



FIFA World Cup Sponsors



National Supporters





# Player Statistics



Group H

**Chile - Spain 1:2 (0:2)**

Tshwane/Pretoria / Loftus Versfeld Stadium / RSA



**Chile**  
**15 Jean BEAUSEJOUR**  
 Forward

	1st half	2nd half	Total	Team total	Team avg
Goal(s) scored	0	0	0	1	
Attempts on/off target	1	0	1	6	
Assist(s)	0	0	0	1	
Offside(s)	0	0	0	3	
Save(s)	0	0	0	1	
Yellow card(s)	0	0	0	4	
Red card	0	0	0	1	
Foul(s) committed	0	0	0	21	
Delivery/solo runs into the attacking third	1	0	1	29	2.9
Delivery/solo runs into the penalty area	1	0	1	4	0.4
Tackles gaining the ball	0	1	1	11	1.1
Tackles not gaining the ball	0	0	0	5	0.5
Tackles suffered losing the ball	1	1	2	6	0.6
Tackles suffered not losing the ball	1	0	1	5	0.5
Clearances Completed	0	0	0	1	0.1
Clearances Attempted	1	0	1	6	0.6

Passing distribution



Direction of play →

Received passing distribution

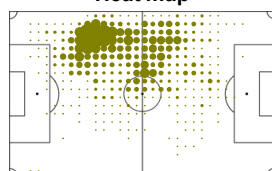


Direction of play →

## Activities

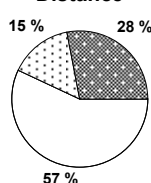
	1st half	2nd half	Total	Team total	Team avg
Total time played (mins)	47'53"	47'05"	94'58"		
Low activity time spent (%)	81%	81%	81%	82%	
Medium activity time spent (%)	8%	8%	8%	9%	
High activity time spent (%)	11%	11%	11%	9%	
Distance covered (metres)	4,895	5,240	10,135	100,296	9,649
Low activity distance covered (metres)	2,638	3,130	5,768	57,294	5,512
Medium activity distance covered (metres)	790	730	1,520	16,402	1,578
High activity distance covered (metres)	1,467	1,380	2,847	26,598	2,559
Top speed (km/h)	25.96	22.53	25.96	25.96	21.50
Sprints	69	70	139	1077	123

Heat map



Direction of play →

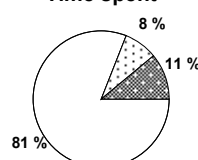
Distance



Activity



Time spent



FIFA does not vouch for the accuracy of technical statistics compiled in association with its competition results system partner.

FRI 25 JUN 2010; 22:36 CET / 22:36 local time - Version 1

2010 FIFA World Cup South Africa™

FIFA Partners



FIFA World Cup Sponsors



National Supporters



# Player Statistics



Group H

**Chile - Spain 1:2 (0:2)**

Tshwane/Pretoria / Loftus Versfeld Stadium / RSA



**Chile**  
**16 Fabian ORELLANA**  
 Forward

	1st half	2nd half	Total	Team total	Team avg
Goal(s) scored	0	0	0	1	
Attempts on/off target	0	0	0	6	
Assist(s)	0	0	0	1	
Offside(s)	0	0	0	3	
Save(s)	0	0	0	1	
Yellow card(s)	0	0	0	4	
Red card	0	0	0	1	
Foul(s) committed	0	0	0	21	
Delivery/solo runs into the attacking third	-	0	0	29	2.9
Delivery/solo runs into the penalty area	-	0	0	4	0.4
Tackles gaining the ball	-	0	0	11	1.1
Tackles not gaining the ball	-	0	0	5	0.5
Tackles suffered losing the ball	-	0	0	6	0.6
Tackles suffered not losing the ball	-	1	1	5	0.5
Clearances Completed	-	0	0	1	0.1
Clearances Attempted	-	0	0	6	0.6

Passing distribution



Direction of play →

Received passing distribution

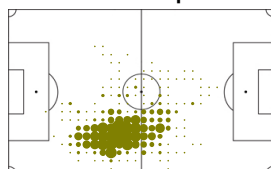


Direction of play →

## Activities

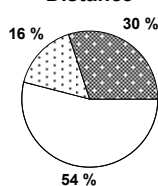
	1st half	2nd half	Total	Team total	Team avg
Total time played (mins)	0'00"	27'22"	27'22"		
Low activity time spent (%)	0%	77%	77%	82%	
Medium activity time spent (%)	0%	9%	9%	9%	
High activity time spent (%)	0%	14%	14%	9%	
Distance covered (metres)	-	3,155	3,155	100,296	9,649
Low activity distance covered (metres)	-	1,713	1,713	57,294	5,512
Medium activity distance covered (metres)	-	496	496	16,402	1,578
High activity distance covered (metres)	-	946	946	26,598	2,559
Top speed (km/h)	-	19.54	19.54	25.96	21.50
Sprints	-	43	43	1077	123

Heat map

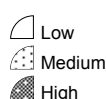


Direction of play →

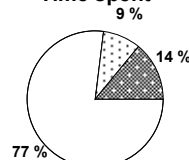
Distance



Activity



Time spent



FIFA does not vouch for the accuracy of technical statistics compiled in association with its competition results system partner.

FRI 25 JUN 2010; 22:36 CET / 22:36 local time - Version 1

Page1/0

2010 FIFA World Cup South Africa™

FIFA Partners



FIFA World Cup Sponsors



National Supporters



# Player Statistics



Group H

**Chile - Spain 1:2 (0:2)**

Tshwane/Pretoria / Loftus Versfeld Stadium / RSA



**Chile**  
**17 Gary MEDEL**  
Defender

	1st half	2nd half	Total	Team total	Team avg
Goal(s) scored	0	0	0	1	
Attempts on/off target	0	0	0	6	
Assist(s)	0	0	0	1	
Offside(s)	0	0	0	3	
Save(s)	0	0	0	1	
Yellow card(s)	1	0	1	4	
Red card	0	0	0	1	
Foul(s) committed	3	0	3	21	
Delivery/solo runs into the attacking third	2	1	3	29	2.9
Delivery/solo runs into the penalty area	0	0	0	4	0.4
Tackles gaining the ball	2	1	3	11	1.1
Tackles not gaining the ball	0	1	1	5	0.5
Tackles suffered losing the ball	0	0	0	6	0.6
Tackles suffered not losing the ball	0	0	0	5	0.5
Clearances Completed	0	0	0	1	0.1
Clearances Attempted	0	1	1	6	0.6

Passing distribution



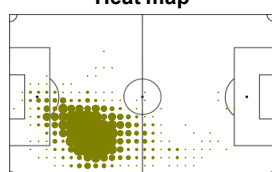
Received passing distribution



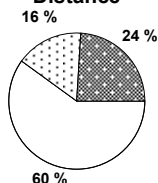
## Activities

	1st half	2nd half	Total	Team total	Team avg
Total time played (mins)	47'53"	47'05"	94'58"		
Low activity time spent (%)	84%	81%	83%	82%	
Medium activity time spent (%)	8%	9%	8%	9%	
High activity time spent (%)	8%	10%	9%	9%	
Distance covered (metres)	4,702	4,958	9,660	100,296	9,649
Low activity distance covered (metres)	2,871	2,877	5,748	57,294	5,512
Medium activity distance covered (metres)	748	817	1,565	16,402	1,578
High activity distance covered (metres)	1,082	1,264	2,346	26,598	2,559
Top speed (km/h)	20.39	19.46	20.39	25.96	21.50
Sprints	46	56	102	1077	123

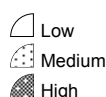
Heat map



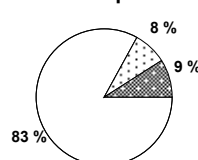
Distance



Activity



Time spent



FIFA does not vouch for the accuracy of technical statistics compiled in association with its competition results system partner.

FRI 25 JUN 2010; 22:36 CET / 22:36 local time - Version 1

Page1/0

2010 FIFA World Cup South Africa™

FIFA Partners



FIFA World Cup Sponsors



National Supporters



# Player Statistics



Group H

## Chile - Spain 1:2 (0:2)

Tshwane/Pretoria / Loftus Versfeld Stadium / RSA



**Chile**  
**18 Gonzalo JARA**  
 Defender

	1st half	2nd half	Total	Team total	Team avg
Goal(s) scored	0	0	0	1	
Attempts on/off target	0	0	0	6	
Assist(s)	0	0	0	1	
Offside(s)	0	0	0	3	
Save(s)	0	0	0	1	
Yellow card(s)	0	0	0	4	
Red card	0	0	0	1	
Foul(s) committed	0	0	0	21	
Delivery/solo runs into the attacking third	2	3	5	29	2.9
Delivery/solo runs into the penalty area	0	0	0	4	0.4
Tackles gaining the ball	2	0	2	11	1.1
Tackles not gaining the ball	0	0	0	5	0.5
Tackles suffered losing the ball	0	1	1	6	0.6
Tackles suffered not losing the ball	0	0	0	5	0.5
Clearances Completed	0	0	0	1	0.1
Clearances Attempted	0	0	0	6	0.6

Passing distribution



Direction of play →

Received passing distribution

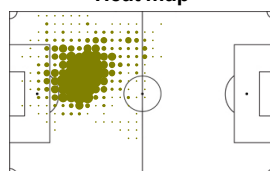


Direction of play →

## Activities

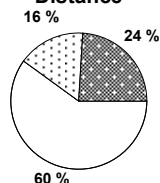
	1st half	2nd half	Total	Team total	Team avg
Total time played (mins)	47'53"	47'05"	94'58"		
Low activity time spent (%)	82%	82%	82%	82%	
Medium activity time spent (%)	8%	10%	9%	9%	
High activity time spent (%)	10%	8%	9%	9%	
Distance covered (metres)	4,469	5,072	9,541	100,296	9,649
Low activity distance covered (metres)	2,614	3,108	5,722	57,294	5,512
Medium activity distance covered (metres)	684	871	1,555	16,402	1,578
High activity distance covered (metres)	1,171	1,093	2,264	26,598	2,559
Top speed (km/h)	18.73	19.08	19.08	25.96	21.50
Sprints	48	47	95	1077	123

Heat map



Direction of play →

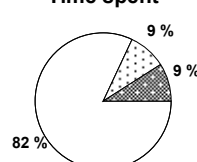
Distance



Activity



Time spent



FIFA does not vouch for the accuracy of technical statistics compiled in association with its competition results system partner.

FRI 25 JUN 2010; 22:36 CET / 22:36 local time - Version 1

Page1/0

2010 FIFA World Cup South Africa™

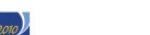
FIFA Partners



FIFA World Cup Sponsors



National Supporters



# Player Statistics



Group H

**Chile - Spain 1:2 (0:2)**

Tshwane/Pretoria / Loftus Versfeld Stadium / RSA



**Chile**  
**20 Rodrigo MILLAR**  
Midfield

	1st half	2nd half	Total	Team total	Team avg
Goal(s) scored	0	1	1	1	
Attempts on/off target	0	1	1	6	
Assist(s)	0	0	0	1	
Offside(s)	0	0	0	3	
Save(s)	0	0	0	1	
Yellow card(s)	0	0	0	4	
Red card	0	0	0	1	
Foul(s) committed	0	0	0	21	
Delivery/solo runs into the attacking third	-	3	3	29	2.9
Delivery/solo runs into the penalty area	-	0	0	4	0.4
Tackles gaining the ball	-	0	0	11	1.1
Tackles not gaining the ball	-	0	0	5	0.5
Tackles suffered losing the ball	-	1	1	6	0.6
Tackles suffered not losing the ball	-	0	0	5	0.5
Clearances Completed	-	0	0	1	0.1
Clearances Attempted	-	0	0	6	0.6

Passing distribution



Direction of play →

Received passing distribution

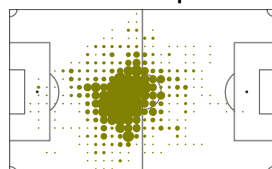


Direction of play →

## Activities

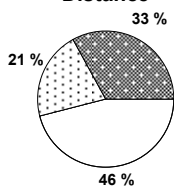
	1st half	2nd half	Total	Team total	Team avg
Total time played (mins)	0'00"	47'05"	47'05"		
Low activity time spent (%)	0%	68%	68%	82%	
Medium activity time spent (%)	0%	15%	15%	9%	
High activity time spent (%)	0%	17%	17%	9%	
Distance covered (metres)	-	6,397	6,397	100,296	9,649
Low activity distance covered (metres)	-	2,914	2,914	57,294	5,512
Medium activity distance covered (metres)	-	1,359	1,359	16,402	1,578
High activity distance covered (metres)	-	2,124	2,124	26,598	2,559
Top speed (km/h)	-	19.88	19.88	25.96	21.50
Sprints	-	54	54	1077	123

Heat map



Direction of play →

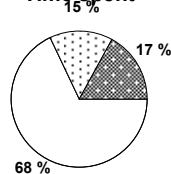
Distance



Activity



Time spent



FIFA does not vouch for the accuracy of technical statistics compiled in association with its competition results system partner.

FRI 25 JUN 2010; 22:36 CET / 22:36 local time - Version 1

Page1/0

2010 FIFA World Cup South Africa™

FIFA Partners



FIFA World Cup Sponsors



National Supporters



# Player Statistics



Group H

**Chile - Spain 1:2 (0:2)**

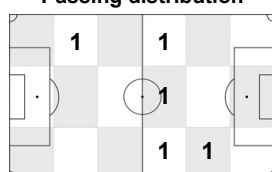
Tshwane/Pretoria / Loftus Versfeld Stadium / RSA



**Chile**  
**22 Esteban PAREDES**  
Forward

	1st half	2nd half	Total	Team total	Team avg
Goal(s) scored	0	0	0	1	
Attempts on/off target	0	1	1	6	
Assist(s)	0	0	0	1	
Offside(s)	0	3	3	3	
Save(s)	0	0	0	1	
Yellow card(s)	0	0	0	4	
Red card	0	0	0	1	
Foul(s) committed	0	1	1	21	
Delivery/solo runs into the attacking third	-	0	0	29	2.9
Delivery/solo runs into the penalty area	-	0	0	4	0.4
Tackles gaining the ball	-	0	0	11	1.1
Tackles not gaining the ball	-	0	0	5	0.5
Tackles suffered losing the ball	-	0	0	6	0.6
Tackles suffered not losing the ball	-	0	0	5	0.5
Clearances Completed	-	0	0	1	0.1
Clearances Attempted	-	0	0	6	0.6

Passing distribution



Direction of play →

Received passing distribution

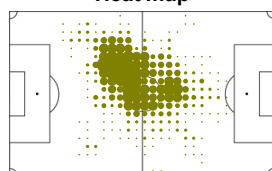


Direction of play →

## Activities

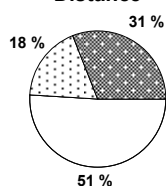
	1st half	2nd half	Total	Team total	Team avg
Total time played (mins)	0'00"	47'05"	47'05"		
Low activity time spent (%)	0%	74%	74%	82%	
Medium activity time spent (%)	0%	12%	12%	9%	
High activity time spent (%)	0%	14%	14%	9%	
Distance covered (metres)	-	5,908	5,908	100,296	9,649
Low activity distance covered (metres)	-	3,017	3,017	57,294	5,512
Medium activity distance covered (metres)	-	1,072	1,072	16,402	1,578
High activity distance covered (metres)	-	1,819	1,819	26,598	2,559
Top speed (km/h)	-	19.46	19.46	25.96	21.50
Sprints	-	69	69	1077	123

Heat map

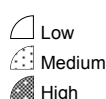


Direction of play →

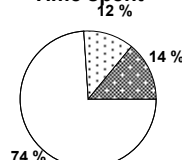
Distance



Activity



Time spent



FIFA does not vouch for the accuracy of technical statistics compiled in association with its competition results system partner.

FRI 25 JUN 2010; 22:36 CET / 22:36 local time - Version 1

Page1/0

2010 FIFA World Cup South Africa™

FIFA Partners



FIFA World Cup Sponsors



National Supporters



