

Player Statistics



Group H

Chile - Spain 1:2 (0:2)

Tshwane/Pretoria / Loftus Versfeld Stadium / RSA



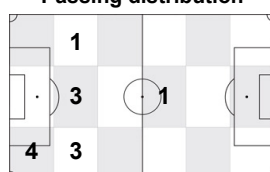
Spain

1 Iker CASILLAS

Goalkeeper

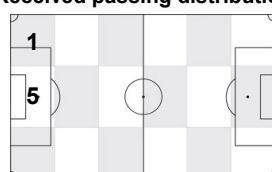
	1st half	2nd half	Total	Team total	Team avg
Goal(s) scored	0	0	0	2	
Attempts on/off target	0	0	0	8	
Assist(s)	0	0	0	1	
Offside(s)	0	0	0	1	
Save(s)	3	0	3	3	
Yellow card(s)	0	0	0	0	
Red card	0	0	0	0	
Foul(s) committed	0	0	0	13	
Delivery/solo runs into the attacking third	0	0	0	46	4.6
Delivery/solo runs into the penalty area	0	0	0	13	1.3
Tackles gaining the ball	0	0	0	6	0.6
Tackles not gaining the ball	0	0	0	5	0.5
Tackles suffered losing the ball	0	0	0	11	1.1
Tackles suffered not losing the ball	0	0	0	5	0.5
Clearances Completed	0	0	0	1	0.1
Clearances Attempted	0	0	0	6	0.6

Passing distribution



Direction of play →

Received passing distribution

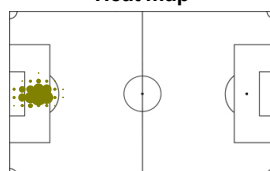


Direction of play →

Activities

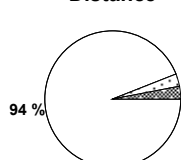
	1st half	2nd half	Total	Team total	Team avg
Total time played (mins)	47'53"	47'05"	94'58"		
Low activity time spent (%)	99%	100%	99%	83%	
Medium activity time spent (%)	1%	0%	0%	8%	
High activity time spent (%)	0%	0%	1%	9%	
Distance covered (metres)	1,625	1,221	2,846	103,660	9,430
Low activity distance covered (metres)	1,481	1,195	2,676	62,155	5,654
Medium activity distance covered (metres)	58	18	76	16,835	1,531
High activity distance covered (metres)	86	8	94	24,667	2,244
Top speed (km/h)	22.53	4.15	22.53	23.70	22.01
Sprints	3	0	3	886	114

Heat map



Direction of play →

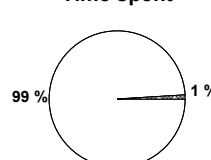
Distance



Activity



Time spent



FIFA does not vouch for the accuracy of technical statistics compiled in association with its competition results system partner.

FRI 25 JUN 2010; 22:36 CET / 22:36 local time - Version 1

Page1/0

2010 FIFA World Cup South Africa™

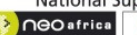
FIFA Partners



FIFA World Cup Sponsors



National Supporters



Player Statistics



Group H

Chile - Spain 1:2 (0:2)

Tshwane/Pretoria / Loftus Versfeld Stadium / RSA



Spain
3 Gerard PIQUE
 Defender

	1st half	2nd half	Total	Team total	Team avg
Goal(s) scored	0	0	0	2	
Attempts on/off target	1	0	1	8	
Assist(s)	0	0	0	1	
Offside(s)	0	0	0	1	
Save(s)	0	0	0	3	
Yellow card(s)	0	0	0	0	
Red card	0	0	0	0	
Foul(s) committed	0	0	0	13	
Delivery/solo runs into the attacking third	3	3	6	46	4.6
Delivery/solo runs into the penalty area	0	0	0	13	1.3
Tackles gaining the ball	1	0	1	6	0.6
Tackles not gaining the ball	0	0	0	5	0.5
Tackles suffered losing the ball	0	0	0	11	1.1
Tackles suffered not losing the ball	0	0	0	5	0.5
Clearances Completed	0	0	0	1	0.1
Clearances Attempted	1	0	1	6	0.6

Passing distribution



Direction of play →

Received passing distribution

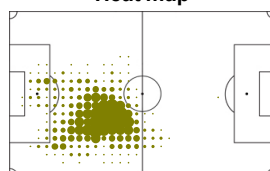


Direction of play →

Activities

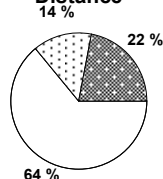
	1st half	2nd half	Total	Team total	Team avg
Total time played (mins)	47'53"	47'05"	94'58"		
Low activity time spent (%)	83%	87%	85%	83%	
Medium activity time spent (%)	7%	6%	7%	8%	
High activity time spent (%)	10%	7%	8%	9%	
Distance covered (metres)	4,703	4,432	9,135	103,660	9,430
Low activity distance covered (metres)	2,746	3,082	5,828	62,155	5,654
Medium activity distance covered (metres)	690	557	1,247	16,835	1,531
High activity distance covered (metres)	1,266	792	2,058	24,667	2,244
Top speed (km/h)	23.70	18.92	23.70	23.70	22.01
Sprints	53	33	86	886	114

Heat map



Direction of play →

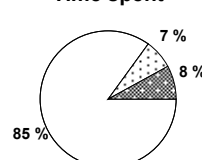
Distance



Activity



Time spent



FIFA does not vouch for the accuracy of technical statistics compiled in association with its competition results system partner.

FRI 25 JUN 2010; 22:36 CET / 22:36 local time - Version 1

Page1/0

2010 FIFA World Cup South Africa™

FIFA Partners



FIFA World Cup Sponsors



National Supporters



Player Statistics



Group H

Chile - Spain 1:2 (0:2)

Tshwane/Pretoria / Loftus Versfeld Stadium / RSA



Spain
5 Carles PUYOL
Defender

	1st half	2nd half	Total	Team total	Team avg
Goal(s) scored	0	0	0	2	
Attempts on/off target	0	0	0	8	
Assist(s)	0	0	0	1	
Offside(s)	0	0	0	1	
Save(s)	0	0	0	3	
Yellow card(s)	0	0	0	0	
Red card	0	0	0	0	
Foul(s) committed	1	0	1	13	
Delivery/solo runs into the attacking third	0	0	0	46	4.6
Delivery/solo runs into the penalty area	0	0	0	13	1.3
Tackles gaining the ball	0	0	0	6	0.6
Tackles not gaining the ball	0	0	0	5	0.5
Tackles suffered losing the ball	0	0	0	11	1.1
Tackles suffered not losing the ball	0	0	0	5	0.5
Clearances Completed	0	0	0	1	0.1
Clearances Attempted	0	0	0	6	0.6

Passing distribution



Direction of play →

Received passing distribution

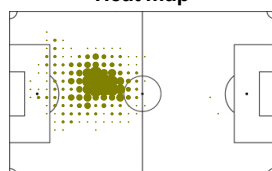


Direction of play →

Activities

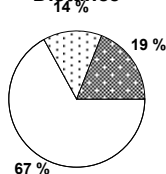
	1st half	2nd half	Total	Team total	Team avg
Total time played (mins)	47'53"	47'05"	94'58"		
Low activity time spent (%)	85%	88%	86%	83%	
Medium activity time spent (%)	7%	6%	7%	8%	
High activity time spent (%)	8%	6%	7%	9%	
Distance covered (metres)	4,411	4,228	8,639	103,660	9,430
Low activity distance covered (metres)	2,773	2,977	5,750	62,155	5,654
Medium activity distance covered (metres)	667	571	1,238	16,835	1,531
High activity distance covered (metres)	970	680	1,650	24,667	2,244
Top speed (km/h)	22.53	18.24	22.53	23.70	22.01
Sprints	34	19	53	886	114

Heat map



Direction of play →

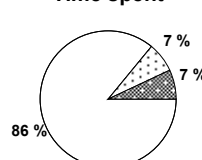
Distance



Activity



Time spent



FIFA does not vouch for the accuracy of technical statistics compiled in association with its competition results system partner.

FRI 25 JUN 2010; 22:36 CET / 22:36 local time - Version 1

Page1/0

2010 FIFA World Cup South Africa™

FIFA Partners



FIFA World Cup Sponsors



National Supporters



Player Statistics



Group H

Chile - Spain 1:2 (0:2)

Tshwane/Pretoria / Loftus Versfeld Stadium / RSA



Spain
6 Andres INIESTA
Midfield

	1st half	2nd half	Total	Team total	Team avg
Goal(s) scored	1	0	1	2	
Attempts on/off target	1	1	2	8	
Assist(s)	0	0	0	1	
Offside(s)	0	0	0	1	
Save(s)	0	0	0	3	
Yellow card(s)	0	0	0	0	
Red card	0	0	0	0	
Foul(s) committed	0	0	0	13	
Delivery/solo runs into the attacking third	5	1	6	46	4.6
Delivery/solo runs into the penalty area	0	3	3	13	1.3
Tackles gaining the ball	0	0	0	6	0.6
Tackles not gaining the ball	0	0	0	5	0.5
Tackles suffered losing the ball	0	1	1	11	1.1
Tackles suffered not losing the ball	1	0	1	5	0.5
Clearances Completed	0	0	0	1	0.1
Clearances Attempted	0	0	0	6	0.6

Passing distribution



Direction of play →

Received passing distribution

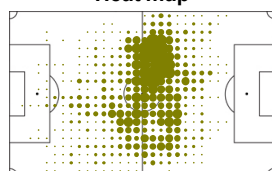


Direction of play →

Activities

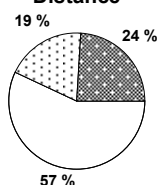
	1st half	2nd half	Total	Team total	Team avg
Total time played (mins)	47'53"	47'05"	94'58"		
Low activity time spent (%)	78%	80%	79%	83%	
Medium activity time spent (%)	11%	11%	11%	8%	
High activity time spent (%)	11%	9%	10%	9%	
Distance covered (metres)	5,314	5,536	10,850	103,660	9,430
Low activity distance covered (metres)	2,892	3,336	6,228	62,155	5,654
Medium activity distance covered (metres)	1,021	1,026	2,047	16,835	1,531
High activity distance covered (metres)	1,400	1,174	2,574	24,667	2,244
Top speed (km/h)	22.83	18.39	22.83	23.70	22.01
Sprints	55	43	98	886	114

Heat map

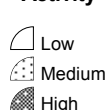


Direction of play →

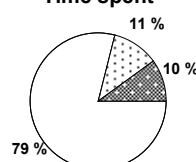
Distance



Activity



Time spent



FIFA does not vouch for the accuracy of technical statistics compiled in association with its competition results system partner.

FRI 25 JUN 2010; 22:36 CET / 22:36 local time - Version 1

Page1/0

2010 FIFA World Cup South Africa™

FIFA Partners



FIFA World Cup Sponsors



National Supporters



Player Statistics



Group H

Chile - Spain 1:2 (0:2)

Tshwane/Pretoria / Loftus Versfeld Stadium / RSA



Spain
7 David VILLA
Forward

	1st half	2nd half	Total	Team total	Team avg
Goal(s) scored	1	0	1	2	
Attempts on/off target	2	1	3	8	
Assist(s)	1	0	1	1	
Offside(s)	0	1	1	1	
Save(s)	0	0	0	3	
Yellow card(s)	0	0	0	0	
Red card	0	0	0	0	
Foul(s) committed	1	1	2	13	
Delivery/solo runs into the attacking third	1	0	1	46	4.6
Delivery/solo runs into the penalty area	2	1	3	13	1.3
Tackles gaining the ball	0	0	0	6	0.6
Tackles not gaining the ball	0	0	0	5	0.5
Tackles suffered losing the ball	1	2	3	11	1.1
Tackles suffered not losing the ball	1	1	2	5	0.5
Clearances Completed	0	0	0	1	0.1
Clearances Attempted	0	0	0	6	0.6

Passing distribution



Direction of play →

Received passing distribution

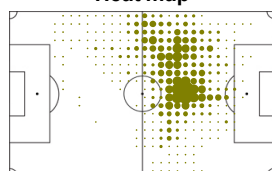


Direction of play →

Activities

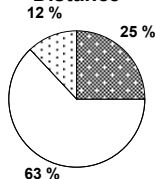
	1st half	2nd half	Total	Team total	Team avg
Total time played (mins)	47'53"	47'05"	94'58"		
Low activity time spent (%)	86%	86%	86%	83%	
Medium activity time spent (%)	6%	6%	6%	8%	
High activity time spent (%)	8%	8%	8%	9%	
Distance covered (metres)	4,461	4,522	8,983	103,660	9,430
Low activity distance covered (metres)	2,775	2,925	5,700	62,155	5,654
Medium activity distance covered (metres)	579	535	1,114	16,835	1,531
High activity distance covered (metres)	1,107	1,063	2,170	24,667	2,244
Top speed (km/h)	20.81	22.70	22.70	23.70	22.01
Sprints	52	50	102	886	114

Heat map



Direction of play →

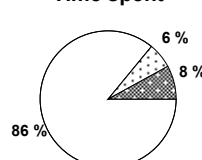
Distance



Activity



Time spent



FIFA does not vouch for the accuracy of technical statistics compiled in association with its competition results system partner.

FRI 25 JUN 2010; 22:36 CET / 22:36 local time - Version 1

Page1/0

2010 FIFA World Cup South Africa™

FIFA Partners



FIFA World Cup Sponsors



National Supporters



Player Statistics



Group H

Chile - Spain 1:2 (0:2)

Tshwane/Pretoria / Loftus Versfeld Stadium / RSA



Spain
8 XAVI
Midfield

	1st half	2nd half	Total	Team total	Team avg
Goal(s) scored	0	0	0	2	
Attempts on/off target	0	0	0	8	
Assist(s)	0	0	0	1	
Offside(s)	0	0	0	1	
Save(s)	0	0	0	3	
Yellow card(s)	0	0	0	0	
Red card	0	0	0	0	
Foul(s) committed	1	0	1	13	
Delivery/solo runs into the attacking third	2	6	8	46	4.6
Delivery/solo runs into the penalty area	3	0	3	13	1.3
Tackles gaining the ball	0	1	1	6	0.6
Tackles not gaining the ball	0	0	0	5	0.5
Tackles suffered losing the ball	1	0	1	11	1.1
Tackles suffered not losing the ball	0	0	0	5	0.5
Clearances Completed	0	0	0	1	0.1
Clearances Attempted	0	0	0	6	0.6

Passing distribution



Direction of play →

Received passing distribution

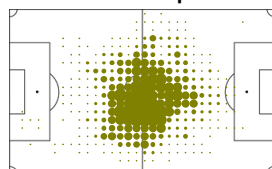


Direction of play →

Activities

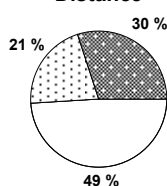
	1st half	2nd half	Total	Team total	Team avg
Total time played (mins)	47'53"	47'05"	94'58"		
Low activity time spent (%)	76%	72%	74%	83%	
Medium activity time spent (%)	11%	14%	12%	8%	
High activity time spent (%)	13%	14%	14%	9%	
Distance covered (metres)	5,629	5,972	11,601	103,660	9,430
Low activity distance covered (metres)	2,661	3,065	5,726	62,155	5,654
Medium activity distance covered (metres)	1,175	1,293	2,468	16,835	1,531
High activity distance covered (metres)	1,793	1,613	3,406	24,667	2,244
Top speed (km/h)	19.16	22.70	22.70	23.70	22.01
Sprints	49	37	86	886	114

Heat map

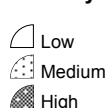


Direction of play →

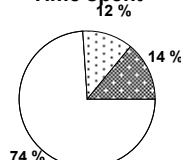
Distance



Activity



Time spent



FIFA does not vouch for the accuracy of technical statistics compiled in association with its competition results system partner.

FRI 25 JUN 2010; 22:36 CET / 22:36 local time - Version 1

Page1/0

2010 FIFA World Cup South Africa™

FIFA Partners



FIFA World Cup Sponsors



National Supporters



Player Statistics



Group H

Chile - Spain 1:2 (0:2)

Tshwane/Pretoria / Loftus Versfeld Stadium / RSA



Spain
9 Fernando TORRES
 Forward

	1st half	2nd half	Total	Team total	Team avg
Goal(s) scored	0	0	0	2	
Attempts on/off target	2	0	2	8	
Assist(s)	0	0	0	1	
Offside(s)	0	0	0	1	
Save(s)	0	0	0	3	
Yellow card(s)	0	0	0	0	
Red card	0	0	0	0	
Foul(s) committed	2	1	3	13	
Delivery/solo runs into the attacking third	0	0	0	46	4.6
Delivery/solo runs into the penalty area	1	0	1	13	1.3
Tackles gaining the ball	0	0	0	6	0.6
Tackles not gaining the ball	0	0	0	5	0.5
Tackles suffered losing the ball	2	0	2	11	1.1
Tackles suffered not losing the ball	1	0	1	5	0.5
Clearances Completed	0	0	0	1	0.1
Clearances Attempted	0	0	0	6	0.6

Passing distribution



Direction of play →

Received passing distribution

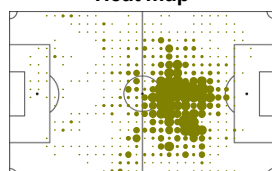


Direction of play →

Activities

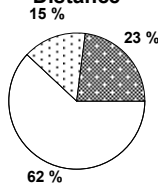
	1st half	2nd half	Total	Team total	Team avg
Total time played (mins)	47'53"	9'05"	56'58"		
Low activity time spent (%)	84%	81%	83%	83%	
Medium activity time spent (%)	7%	9%	7%	8%	
High activity time spent (%)	9%	10%	10%	9%	
Distance covered (metres)	4,896	1,035	5,931	103,660	9,430
Low activity distance covered (metres)	3,079	578	3,657	62,155	5,654
Medium activity distance covered (metres)	703	167	870	16,835	1,531
High activity distance covered (metres)	1,114	291	1,405	24,667	2,244
Top speed (km/h)	20.89	18.75	20.89	23.70	22.01
Sprints	44	18	62	886	114

Heat map



Direction of play →

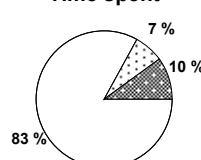
Distance



Activity



Time spent



FIFA does not vouch for the accuracy of technical statistics compiled in association with its competition results system partner.

FRI 25 JUN 2010; 22:36 CET / 22:36 local time - Version 1

Page1/0

2010 FIFA World Cup South Africa™

FIFA Partners



FIFA World Cup Sponsors



National Supporters



Player Statistics



Group H

Chile - Spain 1:2 (0:2)

Tshwane/Pretoria / Loftus Versfeld Stadium / RSA



Spain
10 Cesc FABREGAS
Midfield

	1st half	2nd half	Total	Team total	Team avg
Goal(s) scored	0	0	0	2	
Attempts on/off target	0	0	0	8	
Assist(s)	0	0	0	1	
Offside(s)	0	0	0	1	
Save(s)	0	0	0	3	
Yellow card(s)	0	0	0	0	
Red card	0	0	0	0	
Foul(s) committed	0	1	1	13	
Delivery/solo runs into the attacking third	-	4	4	46	4.6
Delivery/solo runs into the penalty area	-	1	1	13	1.3
Tackles gaining the ball	-	0	0	6	0.6
Tackles not gaining the ball	-	0	0	5	0.5
Tackles suffered losing the ball	-	0	0	11	1.1
Tackles suffered not losing the ball	-	0	0	5	0.5
Clearances Completed	-	0	0	1	0.1
Clearances Attempted	-	0	0	6	0.6

Passing distribution



Direction of play →

Received passing distribution

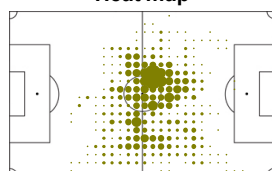


Direction of play →

Activities

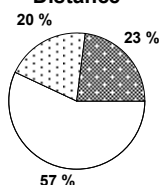
	1st half	2nd half	Total	Team total	Team avg
Total time played (mins)	0'00"	38'00"	38'00"		
Low activity time spent (%)	0%	76%	76%	83%	
Medium activity time spent (%)	0%	12%	12%	8%	
High activity time spent (%)	0%	12%	12%	9%	
Distance covered (metres)	-	4,936	4,936	103,660	9,430
Low activity distance covered (metres)	-	2,823	2,823	62,155	5,654
Medium activity distance covered (metres)	-	973	973	16,835	1,531
High activity distance covered (metres)	-	1,140	1,140	24,667	2,244
Top speed (km/h)	-	20.85	20.85	23.70	22.01
Sprints	-	37	37	886	114

Heat map



Direction of play →

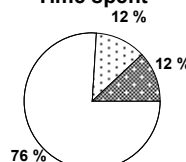
Distance



Activity



Time spent



FIFA does not vouch for the accuracy of technical statistics compiled in association with its competition results system partner.

FRI 25 JUN 2010; 22:36 CET / 22:36 local time - Version 1

Page1/0

2010 FIFA World Cup South Africa™

FIFA Partners



FIFA World Cup Sponsors



National Supporters



Player Statistics



Group H

Chile - Spain 1:2 (0:2)

Tshwane/Pretoria / Loftus Versfeld Stadium / RSA



Spain
11 Joan CAPDEVILA
 Defender

	1st half	2nd half	Total	Team total	Team avg
Goal(s) scored	0	0	0	2	
Attempts on/off target	0	0	0	8	
Assist(s)	0	0	0	1	
Offside(s)	0	0	0	1	
Save(s)	0	0	0	3	
Yellow card(s)	0	0	0	0	
Red card	0	0	0	0	
Foul(s) committed	2	0	2	13	
Delivery/solo runs into the attacking third	8	2	10	46	4.6
Delivery/solo runs into the penalty area	1	0	1	13	1.3
Tackles gaining the ball	0	0	0	6	0.6
Tackles not gaining the ball	0	1	1	5	0.5
Tackles suffered losing the ball	1	1	2	11	1.1
Tackles suffered not losing the ball	0	0	0	5	0.5
Clearances Completed	1	0	1	1	0.1
Clearances Attempted	2	1	3	6	0.6

Passing distribution



Direction of play →

Received passing distribution

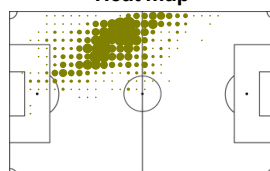


Direction of play →

Activities

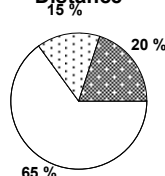
	1st half	2nd half	Total	Team total	Team avg
Total time played (mins)	47'53"	47'05"	94'58"		
Low activity time spent (%)	83%	87%	85%	83%	
Medium activity time spent (%)	9%	7%	8%	8%	
High activity time spent (%)	8%	6%	7%	9%	
Distance covered (metres)	4,858	4,466	9,324	103,660	9,430
Low activity distance covered (metres)	2,955	3,095	6,050	62,155	5,654
Medium activity distance covered (metres)	767	588	1,355	16,835	1,531
High activity distance covered (metres)	1,136	783	1,919	24,667	2,244
Top speed (km/h)	23.22	19.03	23.22	23.70	22.01
Sprints	38	30	68	886	114

Heat map



Direction of play →

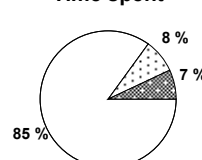
Distance



Activity



Time spent



FIFA does not vouch for the accuracy of technical statistics compiled in association with its competition results system partner.

FRI 25 JUN 2010; 22:36 CET / 22:36 local time - Version 1

Page1/0

2010 FIFA World Cup South Africa™

FIFA Partners



FIFA World Cup Sponsors



National Supporters



Player Statistics



Group H

Chile - Spain 1:2 (0:2)

Tshwane/Pretoria / Loftus Versfeld Stadium / RSA



Spain
14 XABI ALONSO
Midfield

	1st half	2nd half	Total	Team total	Team avg
Goal(s) scored	0	0	0	2	
Attempts on/off target	0	0	0	8	
Assist(s)	0	0	0	1	
Offside(s)	0	0	0	1	
Save(s)	0	0	0	3	
Yellow card(s)	0	0	0	0	
Red card	0	0	0	0	
Foul(s) committed	0	0	0	13	
Delivery/solo runs into the attacking third	2	1	3	46	4.6
Delivery/solo runs into the penalty area	0	0	0	13	1.3
Tackles gaining the ball	2	1	3	6	0.6
Tackles not gaining the ball	2	0	2	5	0.5
Tackles suffered losing the ball	0	0	0	11	1.1
Tackles suffered not losing the ball	0	1	1	5	0.5
Clearances Completed	0	0	0	1	0.1
Clearances Attempted	1	0	1	6	0.6

Passing distribution



Direction of play →

Received passing distribution

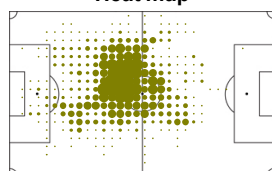


Direction of play →

Activities

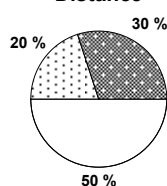
	1st half	2nd half	Total	Team total	Team avg
Total time played (mins)	47'53"	27'49"	75'42"		
Low activity time spent (%)	76%	76%	76%	83%	
Medium activity time spent (%)	10%	12%	11%	8%	
High activity time spent (%)	14%	12%	13%	9%	
Distance covered (metres)	5,459	3,458	8,917	103,660	9,430
Low activity distance covered (metres)	2,664	1,800	4,464	62,155	5,654
Medium activity distance covered (metres)	1,059	694	1,753	16,835	1,531
High activity distance covered (metres)	1,736	964	2,700	24,667	2,244
Top speed (km/h)	21.13	17.37	21.13	23.70	22.01
Sprints	64	32	96	886	114

Heat map



Direction of play →

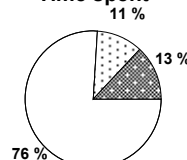
Distance



Activity



Time spent



FIFA does not vouch for the accuracy of technical statistics compiled in association with its competition results system partner.

FRI 25 JUN 2010; 22:36 CET / 22:36 local time - Version 1

Page1/0

2010 FIFA World Cup South Africa™

FIFA Partners



FIFA World Cup Sponsors



National Supporters



Player Statistics



Group H

Chile - Spain 1:2 (0:2)

Tshwane/Pretoria / Loftus Versfeld Stadium / RSA



Spain
15 SERGIO RAMOS
Defender

	1st half	2nd half	Total	Team total	Team avg
Goal(s) scored	0	0	0	2	
Attempts on/off target	0	0	0	8	
Assist(s)	0	0	0	1	
Offside(s)	0	0	0	1	
Save(s)	0	0	0	3	
Yellow card(s)	0	0	0	0	
Red card	0	0	0	0	
Foul(s) committed	1	1	2	13	
Delivery/solo runs into the attacking third	1	3	4	46	4.6
Delivery/solo runs into the penalty area	1	0	1	13	1.3
Tackles gaining the ball	0	0	0	6	0.6
Tackles not gaining the ball	0	0	0	5	0.5
Tackles suffered losing the ball	0	1	1	11	1.1
Tackles suffered not losing the ball	0	0	0	5	0.5
Clearances Completed	0	0	0	1	0.1
Clearances Attempted	0	0	0	6	0.6

Passing distribution



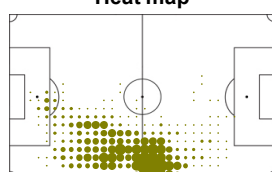
Received passing distribution



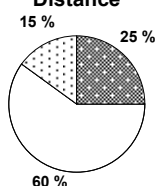
Activities

	1st half	2nd half	Total	Team total	Team avg
Total time played (mins)	47'53"	47'05"	94'58"		
Low activity time spent (%)	82%	84%	83%	83%	
Medium activity time spent (%)	9%	8%	8%	8%	
High activity time spent (%)	9%	8%	9%	9%	
Distance covered (metres)	4,965	4,859	9,824	103,660	9,430
Low activity distance covered (metres)	2,790	3,130	5,920	62,155	5,654
Medium activity distance covered (metres)	796	673	1,469	16,835	1,531
High activity distance covered (metres)	1,379	1,056	2,435	24,667	2,244
Top speed (km/h)	20.85	19.78	20.85	23.70	22.01
Sprints	58	39	97	886	114

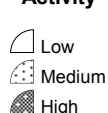
Heat map



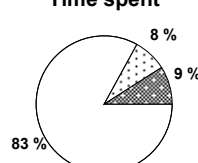
Distance



Activity



Time spent



FIFA does not vouch for the accuracy of technical statistics compiled in association with its competition results system partner.

FRI 25 JUN 2010; 22:36 CET / 22:36 local time - Version 1

Page1/0

2010 FIFA World Cup South Africa™

FIFA Partners



FIFA World Cup Sponsors



National Supporters



Player Statistics



Group H

Chile - Spain 1:2 (0:2)

Tshwane/Pretoria / Loftus Versfeld Stadium / RSA



Spain
16 Sergio BUSQUETS
Midfield

	1st half	2nd half	Total	Team total	Team avg
Goal(s) scored	0	0	0	2	
Attempts on/off target	0	0	0	8	
Assist(s)	0	0	0	1	
Offside(s)	0	0	0	1	
Save(s)	0	0	0	3	
Yellow card(s)	0	0	0	0	
Red card	0	0	0	0	
Foul(s) committed	0	1	1	13	
Delivery/solo runs into the attacking third	1	3	4	46	4.6
Delivery/solo runs into the penalty area	0	0	0	13	1.3
Tackles gaining the ball	0	1	1	6	0.6
Tackles not gaining the ball	2	0	2	5	0.5
Tackles suffered losing the ball	0	0	0	11	1.1
Tackles suffered not losing the ball	0	0	0	5	0.5
Clearances Completed	0	0	0	1	0.1
Clearances Attempted	1	0	1	6	0.6

Passing distribution



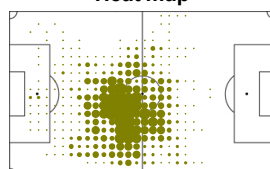
Received passing distribution



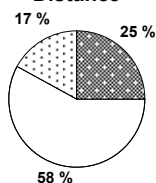
Activities

	1st half	2nd half	Total	Team total	Team avg
Total time played (mins)	47'53"	47'05"	94'58"		
Low activity time spent (%)	82%	80%	81%	83%	
Medium activity time spent (%)	8%	10%	9%	8%	
High activity time spent (%)	10%	10%	10%	9%	
Distance covered (metres)	4,964	5,315	10,279	103,660	9,430
Low activity distance covered (metres)	2,838	3,131	5,969	62,155	5,654
Medium activity distance covered (metres)	851	935	1,786	16,835	1,531
High activity distance covered (metres)	1,274	1,249	2,523	24,667	2,244
Top speed (km/h)	22.06	20.28	22.06	23.70	22.01
Sprints	43	36	79	886	114

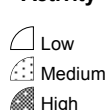
Heat map



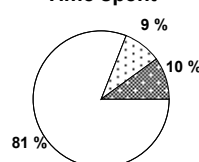
Distance



Activity



Time spent



FIFA does not vouch for the accuracy of technical statistics compiled in association with its competition results system partner.

FRI 25 JUN 2010; 22:36 CET / 22:36 local time - Version 1

Page1/0

2010 FIFA World Cup South Africa™

FIFA Partners



FIFA World Cup Sponsors



National Supporters



Player Statistics



Group H

Chile - Spain 1:2 (0:2)

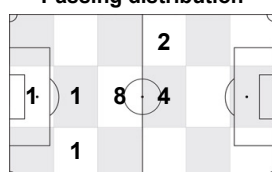
Tshwane/Pretoria / Loftus Versfeld Stadium / RSA



Spain
20 Javier MARTINEZ
Midfield

	1st half	2nd half	Total	Team total	Team avg
Goal(s) scored	0	0	0	2	
Attempts on/off target	0	0	0	8	
Assist(s)	0	0	0	1	
Offside(s)	0	0	0	1	
Save(s)	0	0	0	3	
Yellow card(s)	0	0	0	0	
Red card	0	0	0	0	
Foul(s) committed	0	0	0	13	
Delivery/solo runs into the attacking third	-	0	0	46	4.6
Delivery/solo runs into the penalty area	-	0	0	13	1.3
Tackles gaining the ball	-	0	0	6	0.6
Tackles not gaining the ball	-	0	0	5	0.5
Tackles suffered losing the ball	-	1	1	11	1.1
Tackles suffered not losing the ball	-	0	0	5	0.5
Clearances Completed	-	0	0	1	0.1
Clearances Attempted	-	0	0	6	0.6

Passing distribution



Direction of play →

Received passing distribution

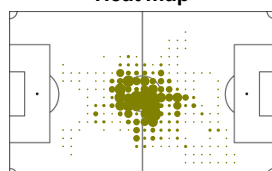


Direction of play →

Activities

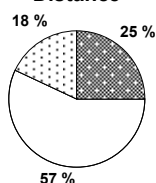
	1st half	2nd half	Total	Team total	Team avg
Total time played (mins)	0'00"	19'16"	19'16"		
Low activity time spent (%)	0%	78%	78%	83%	
Medium activity time spent (%)	0%	11%	11%	8%	
High activity time spent (%)	0%	11%	11%	9%	
Distance covered (metres)	-	2,395	2,395	103,660	9,430
Low activity distance covered (metres)	-	1,364	1,364	62,155	5,654
Medium activity distance covered (metres)	-	439	439	16,835	1,531
High activity distance covered (metres)	-	593	593	24,667	2,244
Top speed (km/h)	-	20.13	20.13	23.70	22.01
Sprints	-	19	19	886	114

Heat map



Direction of play →

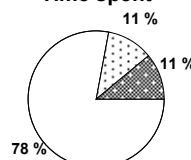
Distance



Activity



Time spent



FIFA does not vouch for the accuracy of technical statistics compiled in association with its competition results system partner.

FRI 25 JUN 2010; 22:36 CET / 22:36 local time - Version 1

Page1/0

2010 FIFA World Cup South Africa™

FIFA Partners



FIFA World Cup Sponsors



National Supporters



